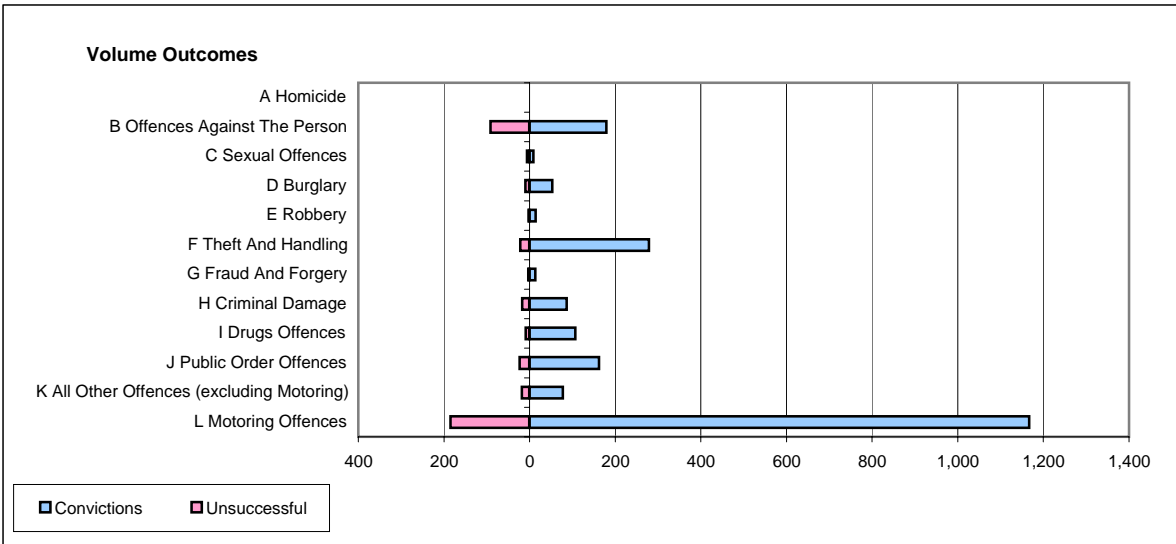
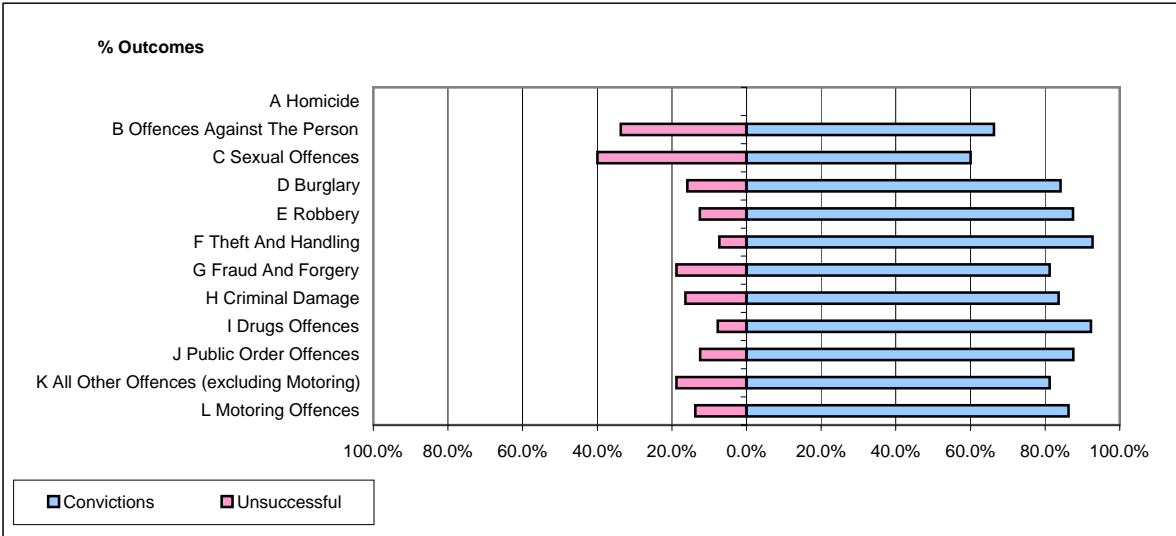


**CPS OUTCOMES BY PRINCIPAL OFFENCE CATEGORY**

**June 2006**

**P32-SouthWales**



	Convictions		Unsuccessful	
	Number of Defendants	%	Number of Defendants	%
<b>A Homicide</b>	<b>0</b>	<b>#DIV/0!</b>	<b>0</b>	<b>#DIV/0!</b>
<b>B Offences Against The Person</b>	<b>179</b>	<b>66.3%</b>	<b>91</b>	<b>33.7%</b>
<b>C Sexual Offences</b>	<b>9</b>	<b>60.0%</b>	<b>6</b>	<b>40.0%</b>
<b>D Burglary</b>	<b>53</b>	<b>84.1%</b>	<b>10</b>	<b>15.9%</b>
<b>E Robbery</b>	<b>14</b>	<b>87.5%</b>	<b>2</b>	<b>12.5%</b>
<b>F Theft And Handling</b>	<b>279</b>	<b>92.7%</b>	<b>22</b>	<b>7.3%</b>
<b>G Fraud And Forgery</b>	<b>13</b>	<b>81.3%</b>	<b>3</b>	<b>18.8%</b>
<b>H Criminal Damage</b>	<b>87</b>	<b>83.7%</b>	<b>17</b>	<b>16.3%</b>
<b>I Drugs Offences</b>	<b>107</b>	<b>92.2%</b>	<b>9</b>	<b>7.8%</b>
<b>J Public Order Offences</b>	<b>162</b>	<b>87.6%</b>	<b>23</b>	<b>12.4%</b>
<b>K All Other Offences (excluding Motoring)</b>	<b>78</b>	<b>81.3%</b>	<b>18</b>	<b>18.8%</b>
<b>L Motoring Offences</b>	<b>1,167</b>	<b>86.3%</b>	<b>185</b>	<b>13.7%</b>
<b>Admin Finalisations</b>	<b>0</b>	<b>0.0%</b>	<b>83</b>	<b>100.0%</b>
<b>TOTAL</b>	<b>2,148</b>	<b>82.1%</b>	<b>469</b>	<b>17.9%</b>