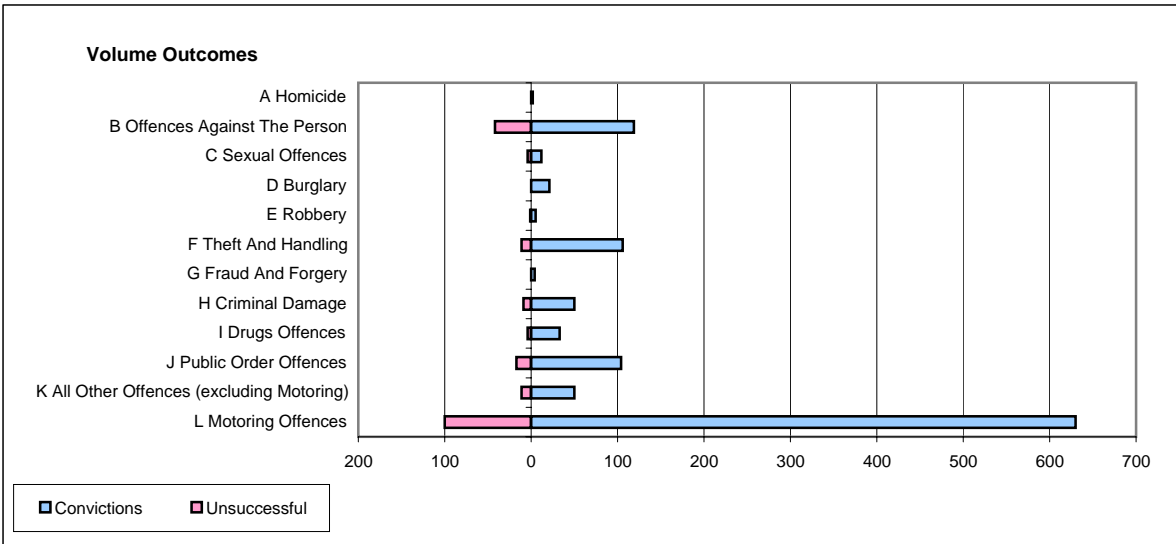
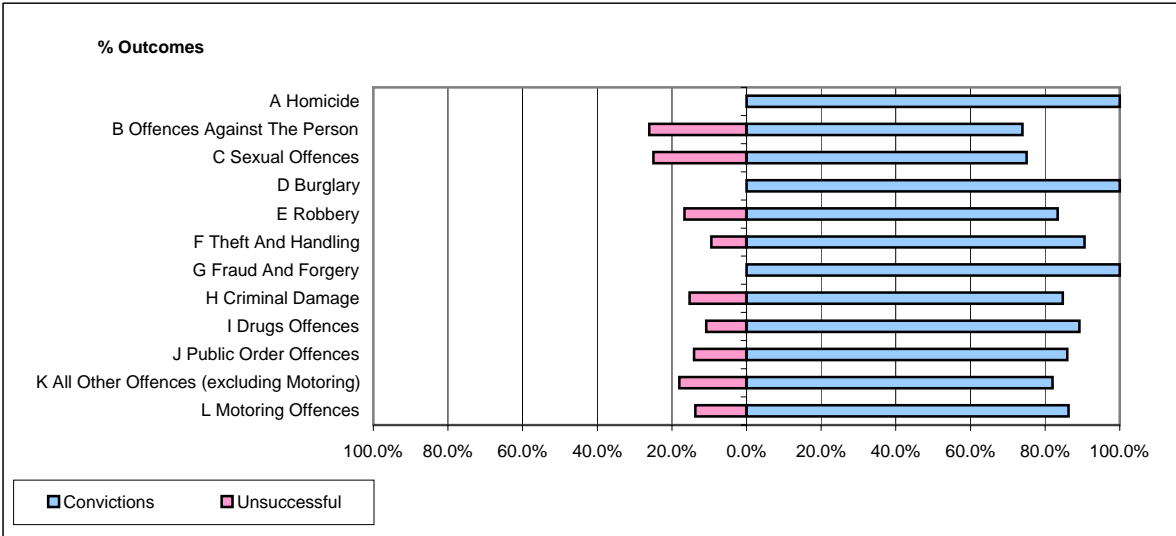


**CPS OUTCOMES BY PRINCIPAL OFFENCE CATEGORY**

**June 2006**

**P29-NorthWales**



	Convictions		Unsuccessful	
	Number of Defendants	%	Number of Defendants	%
<b>A Homicide</b>	<b>2</b>	<b>100.0%</b>	<b>0</b>	<b>0.0%</b>
<b>B Offences Against The Person</b>	<b>119</b>	<b>73.9%</b>	<b>42</b>	<b>26.1%</b>
<b>C Sexual Offences</b>	<b>12</b>	<b>75.0%</b>	<b>4</b>	<b>25.0%</b>
<b>D Burglary</b>	<b>21</b>	<b>100.0%</b>	<b>0</b>	<b>0.0%</b>
<b>E Robbery</b>	<b>5</b>	<b>83.3%</b>	<b>1</b>	<b>16.7%</b>
<b>F Theft And Handling</b>	<b>106</b>	<b>90.6%</b>	<b>11</b>	<b>9.4%</b>
<b>G Fraud And Forgery</b>	<b>4</b>	<b>100.0%</b>	<b>0</b>	<b>0.0%</b>
<b>H Criminal Damage</b>	<b>50</b>	<b>84.7%</b>	<b>9</b>	<b>15.3%</b>
<b>I Drugs Offences</b>	<b>33</b>	<b>89.2%</b>	<b>4</b>	<b>10.8%</b>
<b>J Public Order Offences</b>	<b>104</b>	<b>86.0%</b>	<b>17</b>	<b>14.0%</b>
<b>K All Other Offences (excluding Motoring)</b>	<b>50</b>	<b>82.0%</b>	<b>11</b>	<b>18.0%</b>
<b>L Motoring Offences</b>	<b>630</b>	<b>86.3%</b>	<b>100</b>	<b>13.7%</b>
<b>Admin Finalisations</b>	<b>0</b>	<b>0.0%</b>	<b>12</b>	<b>100.0%</b>
<b>TOTAL</b>	<b>1,136</b>	<b>84.3%</b>	<b>211</b>	<b>15.7%</b>