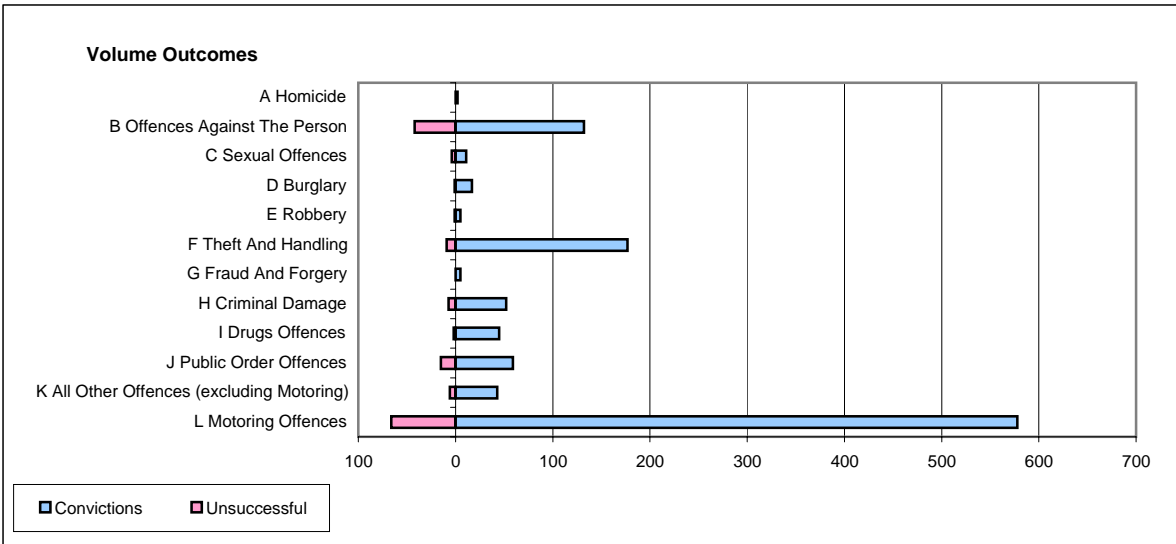
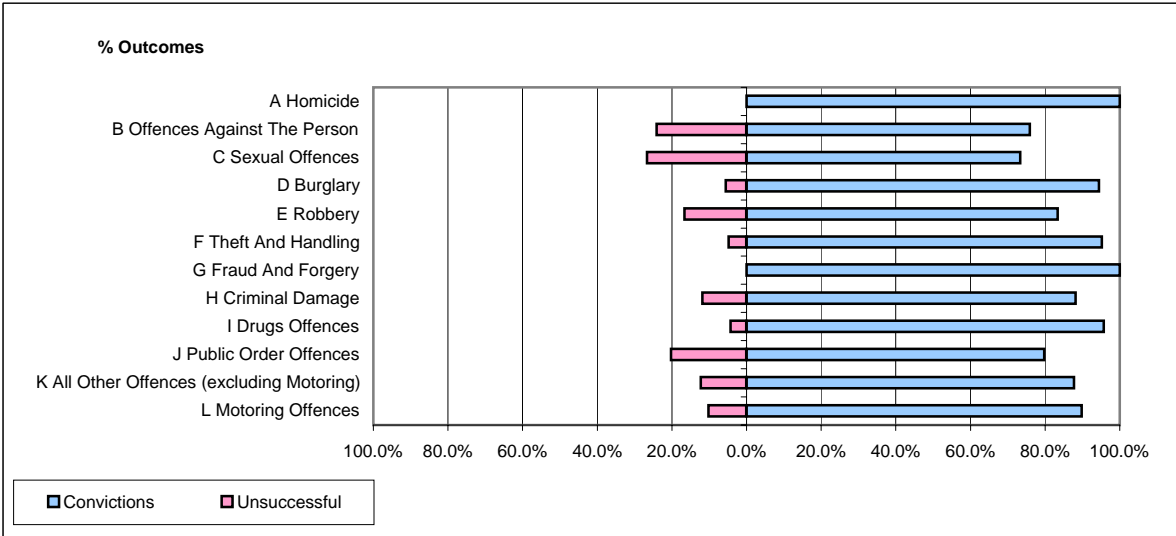


CPS OUTCOMES BY PRINCIPAL OFFENCE CATEGORY

June 2006

P26-Norfolk



	Convictions		Unsuccessful	
	Number of Defendants	%	Number of Defendants	%
A Homicide	2	100.0%	0	0.0%
B Offences Against The Person	132	75.9%	42	24.1%
C Sexual Offences	11	73.3%	4	26.7%
D Burglary	17	94.4%	1	5.6%
E Robbery	5	83.3%	1	16.7%
F Theft And Handling	177	95.2%	9	4.8%
G Fraud And Forgery	5	100.0%	0	0.0%
H Criminal Damage	52	88.1%	7	11.9%
I Drugs Offences	45	95.7%	2	4.3%
J Public Order Offences	59	79.7%	15	20.3%
K All Other Offences (excluding Motoring)	43	87.8%	6	12.2%
L Motoring Offences	578	89.8%	66	10.2%
Admin Finalisations	0	0.0%	25	100.0%
TOTAL	1,126	86.3%	178	13.7%