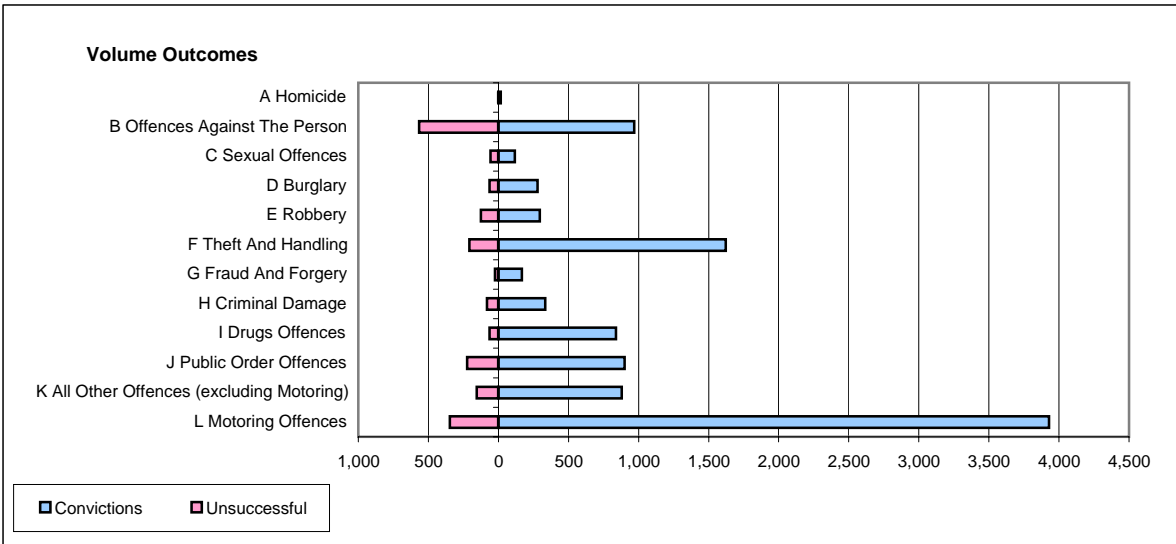
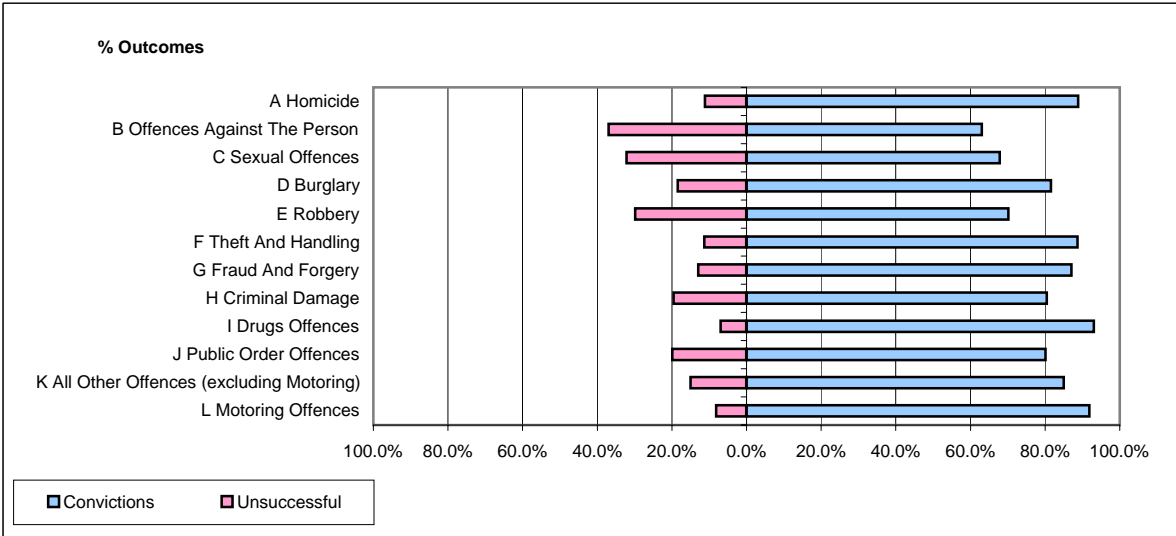


CPS OUTCOMES BY PRINCIPAL OFFENCE CATEGORY

June 2006

P25-Metropolitan&City



	Convictions		Unsuccessful	
	Number of Defendants	%	Number of Defendants	%
A Homicide	16	88.9%	2	11.1%
B Offences Against The Person	968	63.1%	567	36.9%
C Sexual Offences	118	67.8%	56	32.2%
D Burglary	278	81.5%	63	18.5%
E Robbery	294	70.2%	125	29.8%
F Theft And Handling	1,621	88.7%	207	11.3%
G Fraud And Forgery	168	87.0%	25	13.0%
H Criminal Damage	333	80.4%	81	19.6%
I Drugs Offences	839	93.0%	63	7.0%
J Public Order Offences	901	80.1%	224	19.9%
K All Other Offences (excluding Motoring)	880	85.0%	155	15.0%
L Motoring Offences	3,930	91.9%	347	8.1%
Admin Finalisations	0	0.0%	537	100.0%
TOTAL	10,346	80.8%	2,452	19.2%