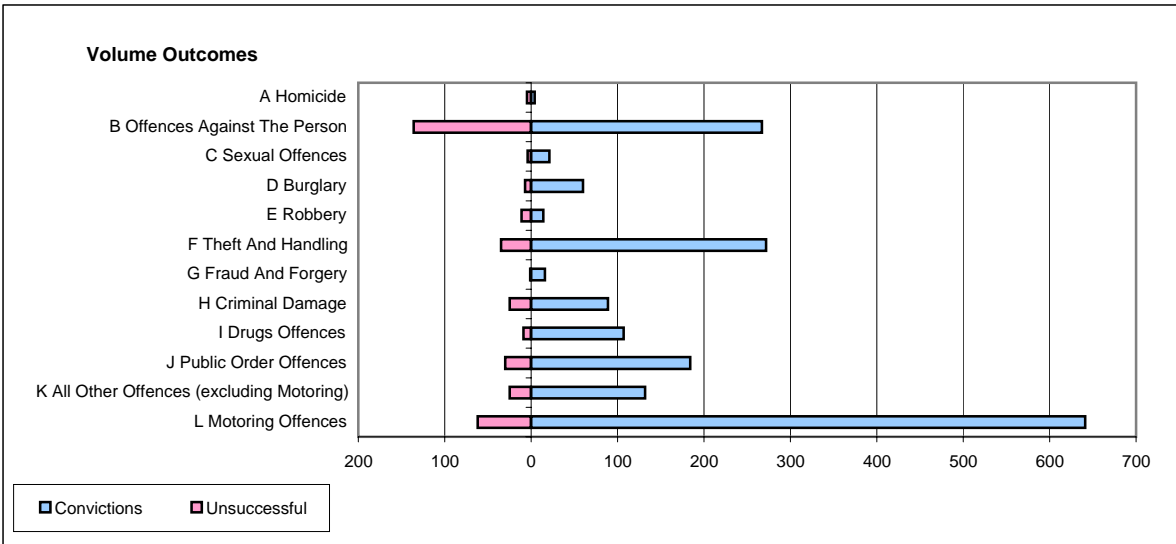
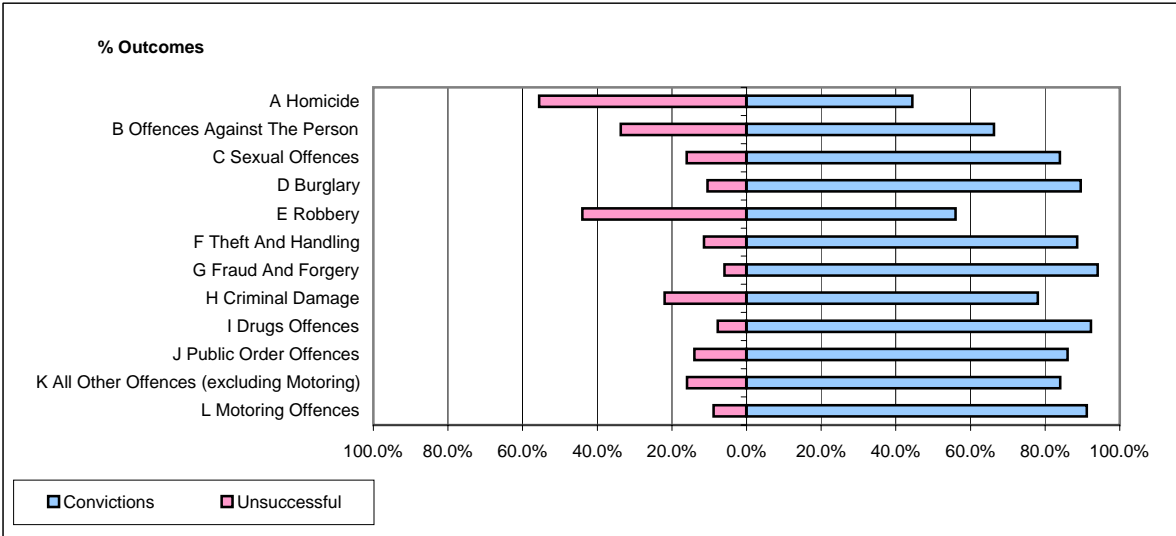


CPS OUTCOMES BY PRINCIPAL OFFENCE CATEGORY

June 2006

P24-Merseyside



	Convictions		Unsuccessful	
	Number of Defendants	%	Number of Defendants	%
A Homicide	4	44.4%	5	55.6%
B Offences Against The Person	267	66.3%	136	33.7%
C Sexual Offences	21	84.0%	4	16.0%
D Burglary	60	89.6%	7	10.4%
E Robbery	14	56.0%	11	44.0%
F Theft And Handling	272	88.6%	35	11.4%
G Fraud And Forgery	16	94.1%	1	5.9%
H Criminal Damage	89	78.1%	25	21.9%
I Drugs Offences	107	92.2%	9	7.8%
J Public Order Offences	184	86.0%	30	14.0%
K All Other Offences (excluding Motoring)	132	84.1%	25	15.9%
L Motoring Offences	641	91.2%	62	8.8%
Admin Finalisations	0	0.0%	56	100.0%
TOTAL	1,807	81.7%	406	18.3%