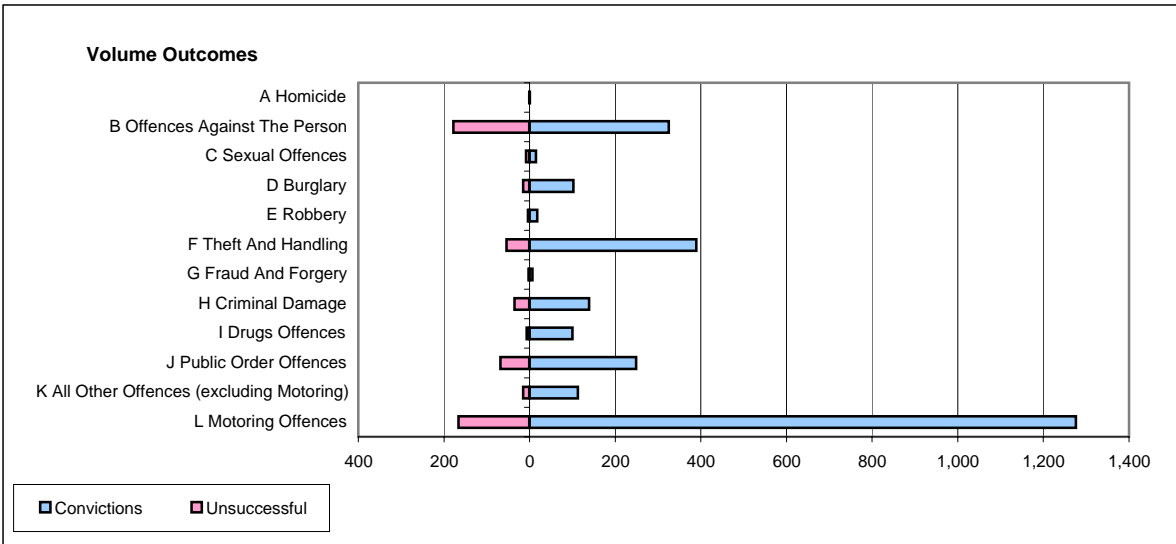
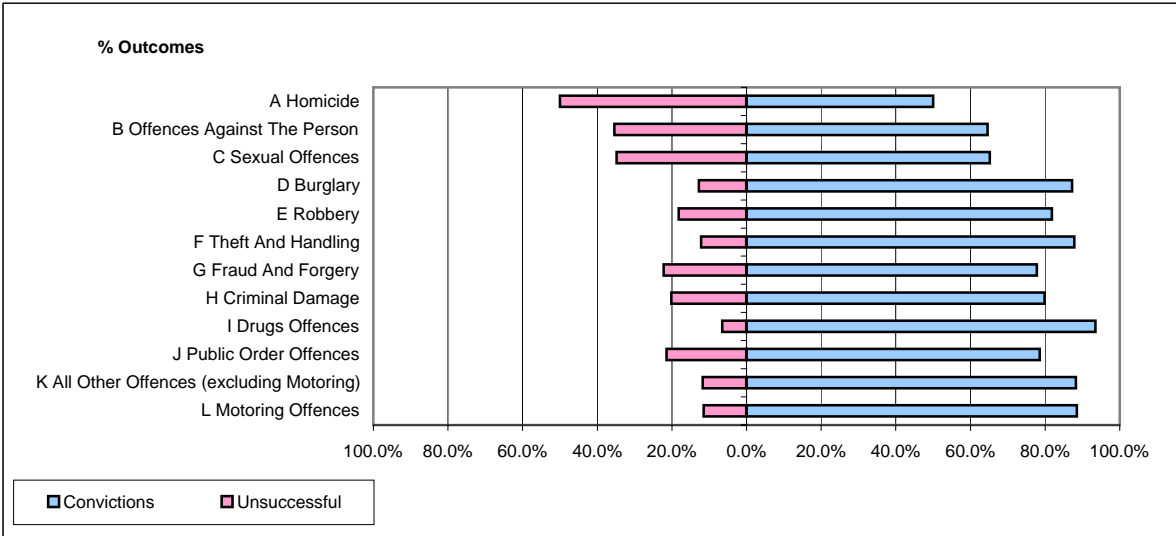


CPS OUTCOMES BY PRINCIPAL OFFENCE CATEGORY

June 2006

P21-Lancashire



	Convictions		Unsuccessful	
	Number of Defendants	%	Number of Defendants	%
A Homicide	1	50.0%	1	50.0%
B Offences Against The Person	325	64.6%	178	35.4%
C Sexual Offences	15	65.2%	8	34.8%
D Burglary	102	87.2%	15	12.8%
E Robbery	18	81.8%	4	18.2%
F Theft And Handling	389	87.8%	54	12.2%
G Fraud And Forgery	7	77.8%	2	22.2%
H Criminal Damage	139	79.9%	35	20.1%
I Drugs Offences	100	93.5%	7	6.5%
J Public Order Offences	249	78.5%	68	21.5%
K All Other Offences (excluding Motoring)	113	88.3%	15	11.7%
L Motoring Offences	1,276	88.5%	166	11.5%
Admin Finalisations	0	0.0%	87	100.0%
TOTAL	2,734	81.0%	640	19.0%