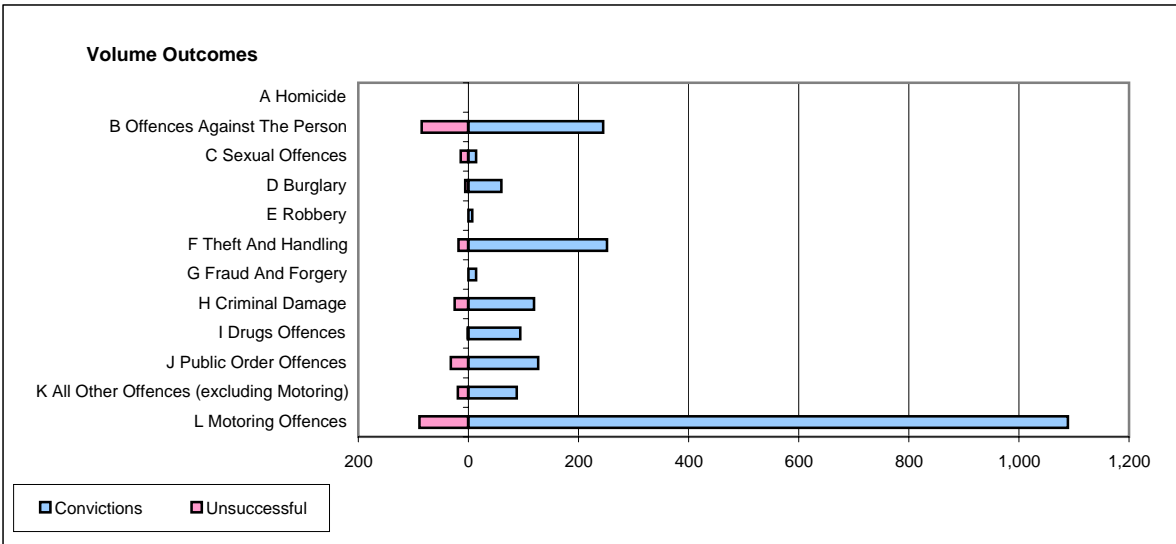
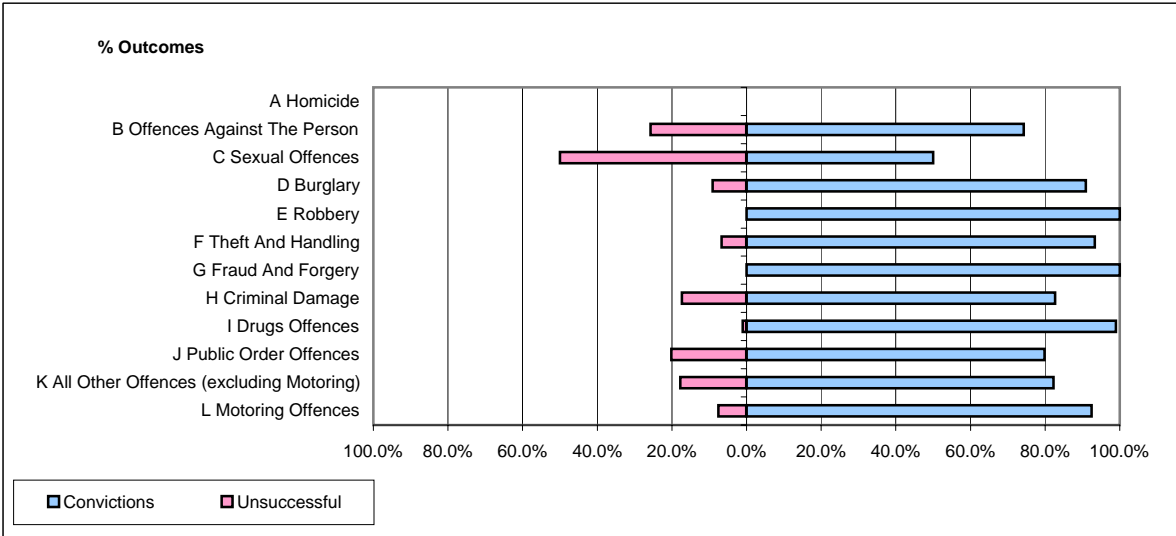


CPS OUTCOMES BY PRINCIPAL OFFENCE CATEGORY

June 2006

P20-Kent



	Convictions		Unsuccessful	
	Number of Defendants	%	Number of Defendants	%
A Homicide	0	#DIV/0!	0	#DIV/0!
B Offences Against The Person	245	74.2%	85	25.8%
C Sexual Offences	14	50.0%	14	50.0%
D Burglary	60	90.9%	6	9.1%
E Robbery	7	100.0%	0	0.0%
F Theft And Handling	252	93.3%	18	6.7%
G Fraud And Forgery	14	100.0%	0	0.0%
H Criminal Damage	119	82.6%	25	17.4%
I Drugs Offences	94	98.9%	1	1.1%
J Public Order Offences	127	79.9%	32	20.1%
K All Other Offences (excluding Motoring)	88	82.2%	19	17.8%
L Motoring Offences	1,089	92.4%	89	7.6%
Admin Finalisations	0	0.0%	36	100.0%
TOTAL	2,109	86.6%	325	13.4%