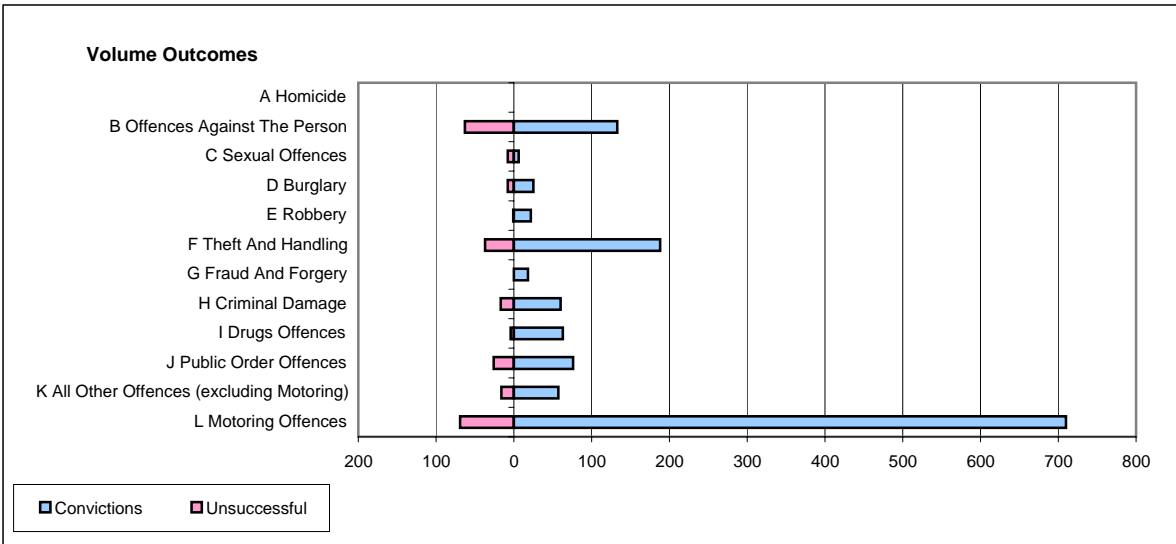
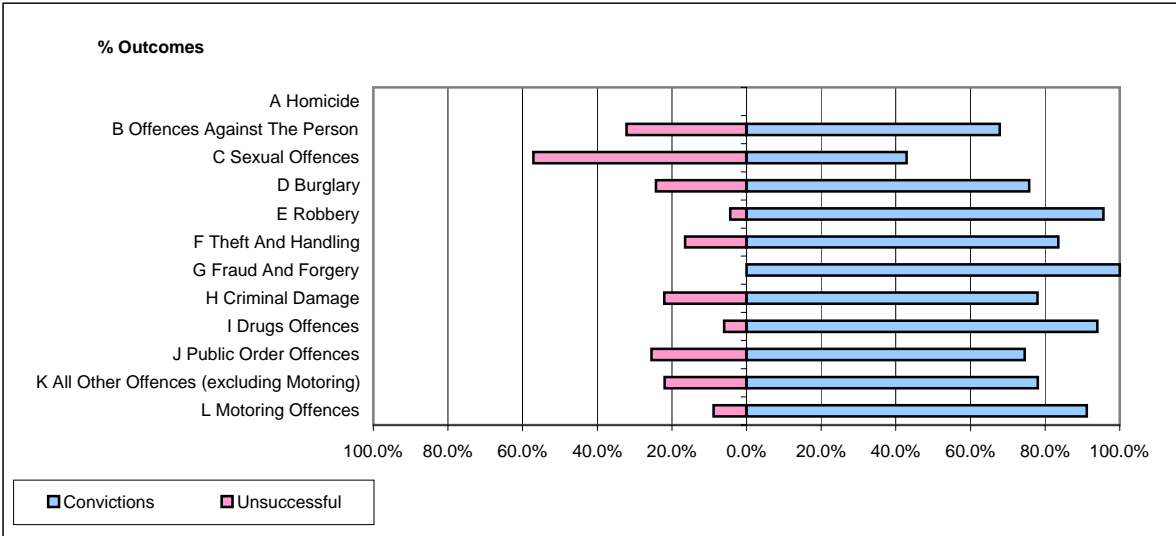


**CPS OUTCOMES BY PRINCIPAL OFFENCE CATEGORY**

**June 2006**

**P18-Hertfordshire**



	Convictions		Unsuccessful	
	Number of Defendants	%	Number of Defendants	%
<b>A Homicide</b>	<b>0</b>	<b>#DIV/0!</b>	<b>0</b>	<b>#DIV/0!</b>
<b>B Offences Against The Person</b>	<b>133</b>	<b>67.9%</b>	<b>63</b>	<b>32.1%</b>
<b>C Sexual Offences</b>	<b>6</b>	<b>42.9%</b>	<b>8</b>	<b>57.1%</b>
<b>D Burglary</b>	<b>25</b>	<b>75.8%</b>	<b>8</b>	<b>24.2%</b>
<b>E Robbery</b>	<b>22</b>	<b>95.7%</b>	<b>1</b>	<b>4.3%</b>
<b>F Theft And Handling</b>	<b>188</b>	<b>83.6%</b>	<b>37</b>	<b>16.4%</b>
<b>G Fraud And Forgery</b>	<b>18</b>	<b>100.0%</b>	<b>0</b>	<b>0.0%</b>
<b>H Criminal Damage</b>	<b>60</b>	<b>77.9%</b>	<b>17</b>	<b>22.1%</b>
<b>I Drugs Offences</b>	<b>63</b>	<b>94.0%</b>	<b>4</b>	<b>6.0%</b>
<b>J Public Order Offences</b>	<b>76</b>	<b>74.5%</b>	<b>26</b>	<b>25.5%</b>
<b>K All Other Offences (excluding Motoring)</b>	<b>57</b>	<b>78.1%</b>	<b>16</b>	<b>21.9%</b>
<b>L Motoring Offences</b>	<b>710</b>	<b>91.1%</b>	<b>69</b>	<b>8.9%</b>
<b>Admin Finalisations</b>	<b>0</b>	<b>0.0%</b>	<b>34</b>	<b>100.0%</b>
<b>TOTAL</b>	<b>1,358</b>	<b>82.8%</b>	<b>283</b>	<b>17.2%</b>