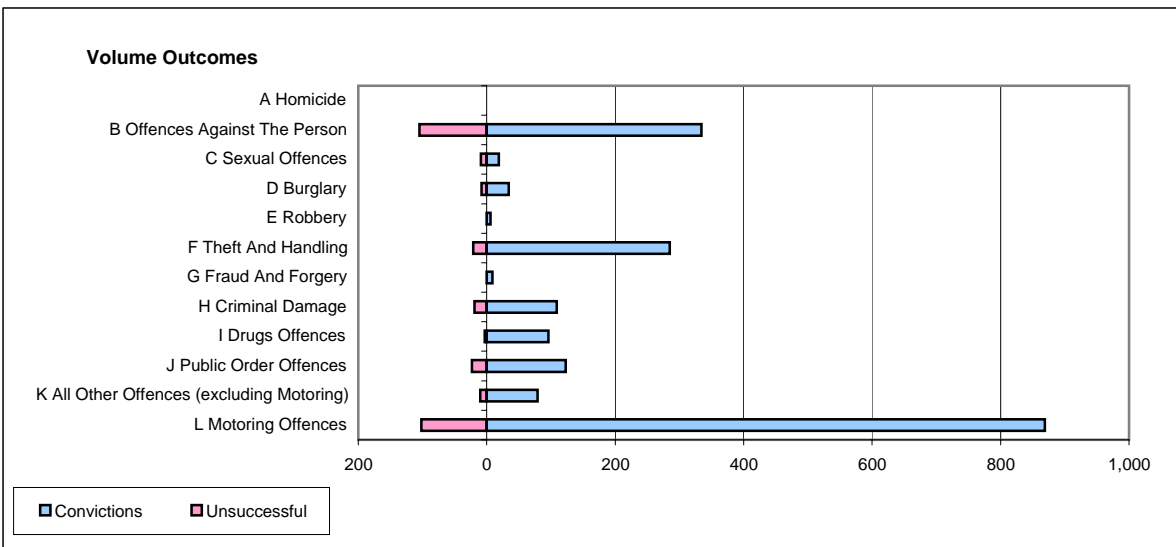
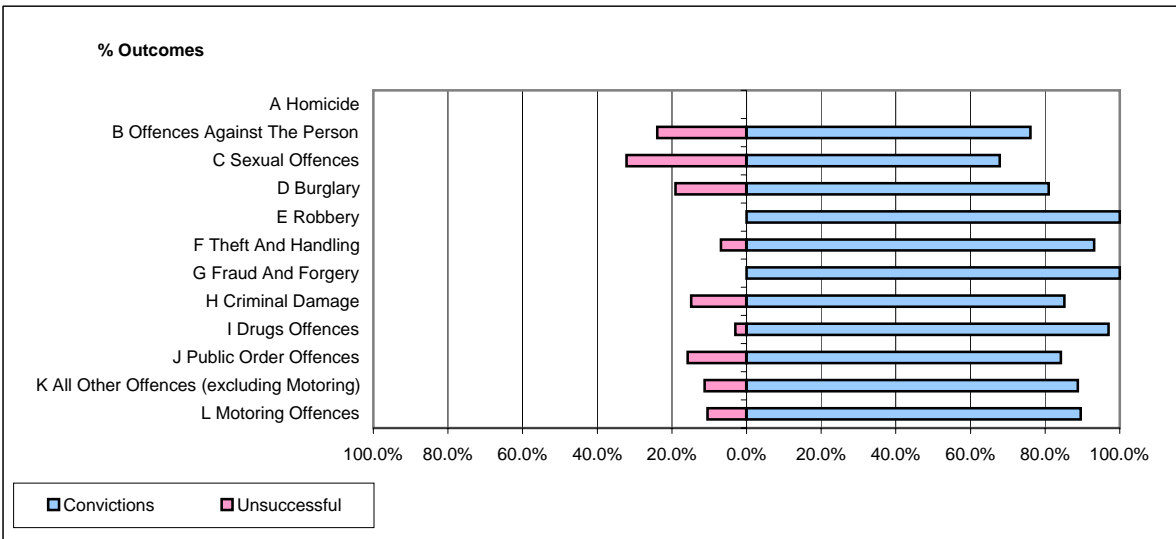


**CPS OUTCOMES BY PRINCIPAL OFFENCE CATEGORY**

**June 2006**

**P17-Hampshire**



	Convictions		Unsuccessful	
	Number of Defendants	%	Number of Defendants	%
<b>A Homicide</b>	<b>0</b>	<b>#DIV/0!</b>	<b>0</b>	<b>#DIV/0!</b>
<b>B Offences Against The Person</b>	<b>334</b>	<b>76.1%</b>	<b>105</b>	<b>23.9%</b>
<b>C Sexual Offences</b>	<b>19</b>	<b>67.9%</b>	<b>9</b>	<b>32.1%</b>
<b>D Burglary</b>	<b>34</b>	<b>81.0%</b>	<b>8</b>	<b>19.0%</b>
<b>E Robbery</b>	<b>6</b>	<b>100.0%</b>	<b>0</b>	<b>0.0%</b>
<b>F Theft And Handling</b>	<b>285</b>	<b>93.1%</b>	<b>21</b>	<b>6.9%</b>
<b>G Fraud And Forgery</b>	<b>9</b>	<b>100.0%</b>	<b>0</b>	<b>0.0%</b>
<b>H Criminal Damage</b>	<b>109</b>	<b>85.2%</b>	<b>19</b>	<b>14.8%</b>
<b>I Drugs Offences</b>	<b>96</b>	<b>97.0%</b>	<b>3</b>	<b>3.0%</b>
<b>J Public Order Offences</b>	<b>123</b>	<b>84.2%</b>	<b>23</b>	<b>15.8%</b>
<b>K All Other Offences (excluding Motoring)</b>	<b>79</b>	<b>88.8%</b>	<b>10</b>	<b>11.2%</b>
<b>L Motoring Offences</b>	<b>869</b>	<b>89.5%</b>	<b>102</b>	<b>10.5%</b>
<b>Admin Finalisations</b>	<b>0</b>	<b>0.0%</b>	<b>33</b>	<b>100.0%</b>
<b>TOTAL</b>	<b>1,963</b>	<b>85.5%</b>	<b>333</b>	<b>14.5%</b>