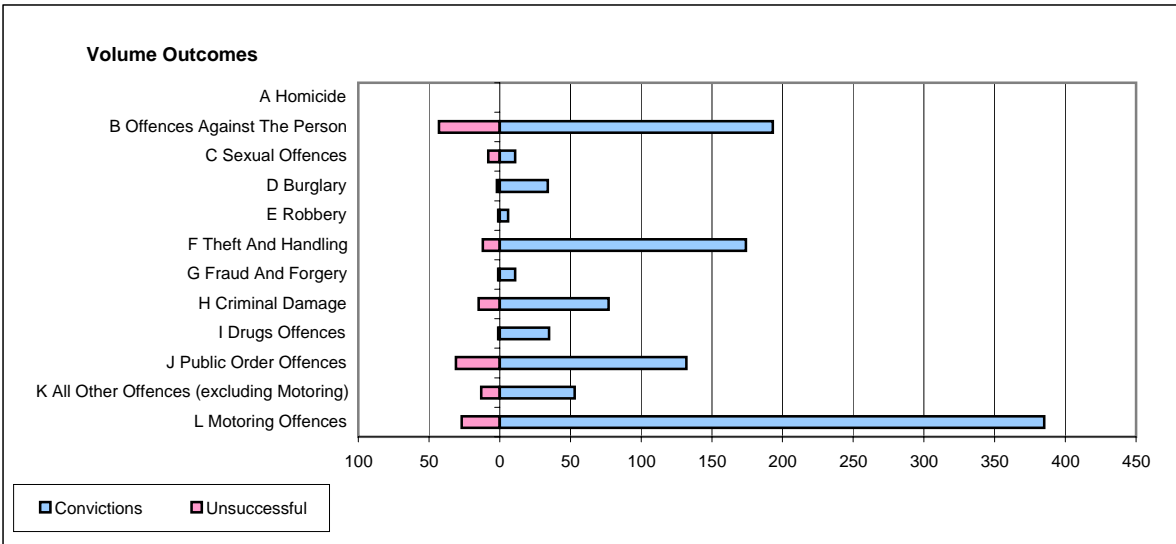
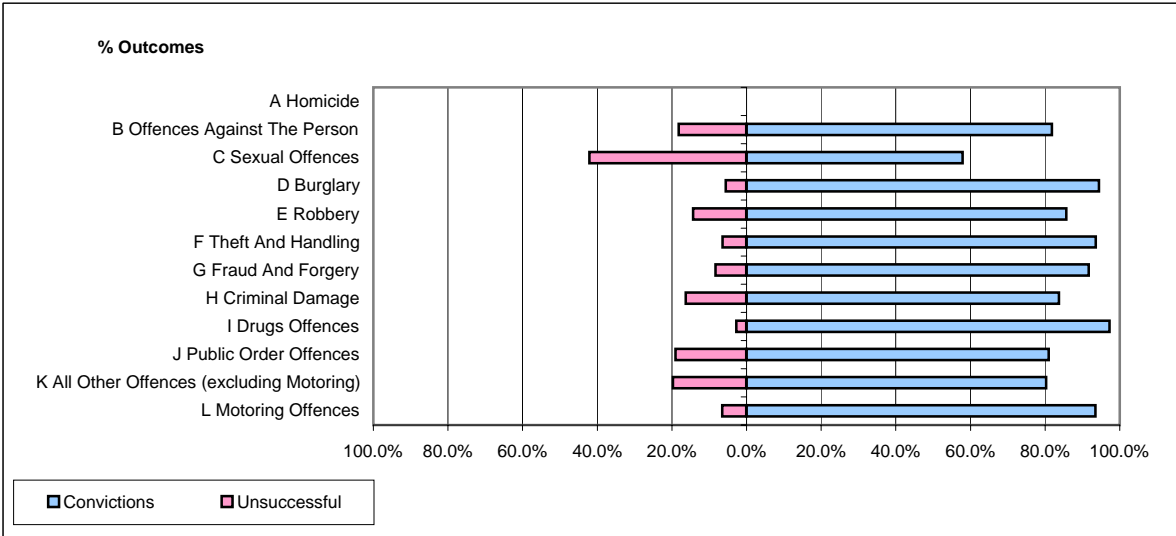


CPS OUTCOMES BY PRINCIPAL OFFENCE CATEGORY

June 2006

P11-Durham



	Convictions		Unsuccessful	
	Number of Defendants	%	Number of Defendants	%
A Homicide	0	#DIV/0!	0	#DIV/0!
B Offences Against The Person	193	81.8%	43	18.2%
C Sexual Offences	11	57.9%	8	42.1%
D Burglary	34	94.4%	2	5.6%
E Robbery	6	85.7%	1	14.3%
F Theft And Handling	174	93.5%	12	6.5%
G Fraud And Forgery	11	91.7%	1	8.3%
H Criminal Damage	77	83.7%	15	16.3%
I Drugs Offences	35	97.2%	1	2.8%
J Public Order Offences	132	81.0%	31	19.0%
K All Other Offences (excluding Motoring)	53	80.3%	13	19.7%
L Motoring Offences	385	93.4%	27	6.6%
Admin Finalisations	0	0.0%	16	100.0%
TOTAL	1,111	86.7%	170	13.3%