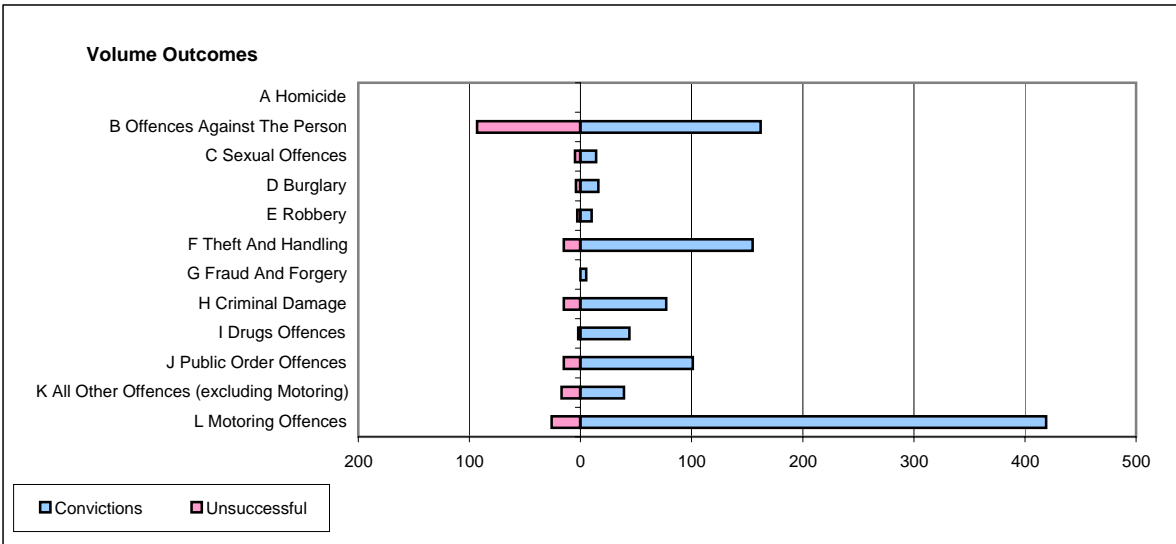
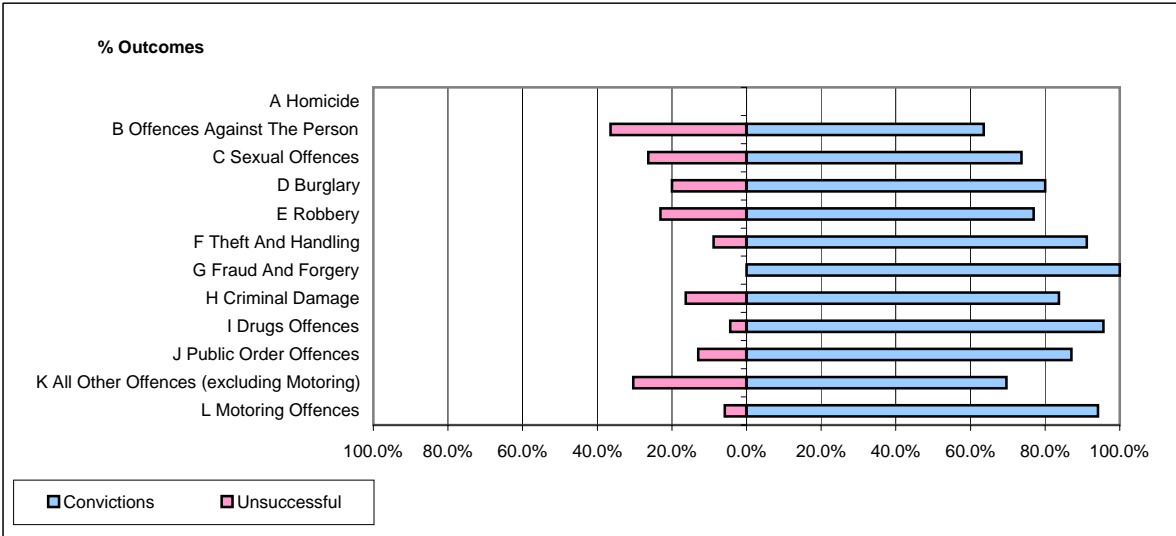


CPS OUTCOMES BY PRINCIPAL OFFENCE CATEGORY

June 2006

P08-Derbyshire



	Convictions		Unsuccessful	
	Number of Defendants	%	Number of Defendants	%
A Homicide	0	#DIV/0!	0	#DIV/0!
B Offences Against The Person	162	63.5%	93	36.5%
C Sexual Offences	14	73.7%	5	26.3%
D Burglary	16	80.0%	4	20.0%
E Robbery	10	76.9%	3	23.1%
F Theft And Handling	155	91.2%	15	8.8%
G Fraud And Forgery	5	100.0%	0	0.0%
H Criminal Damage	77	83.7%	15	16.3%
I Drugs Offences	44	95.7%	2	4.3%
J Public Order Offences	101	87.1%	15	12.9%
K All Other Offences (excluding Motoring)	39	69.6%	17	30.4%
L Motoring Offences	419	94.2%	26	5.8%
Admin Finalisations	0	0.0%	9	100.0%
TOTAL	1,042	83.6%	204	16.4%