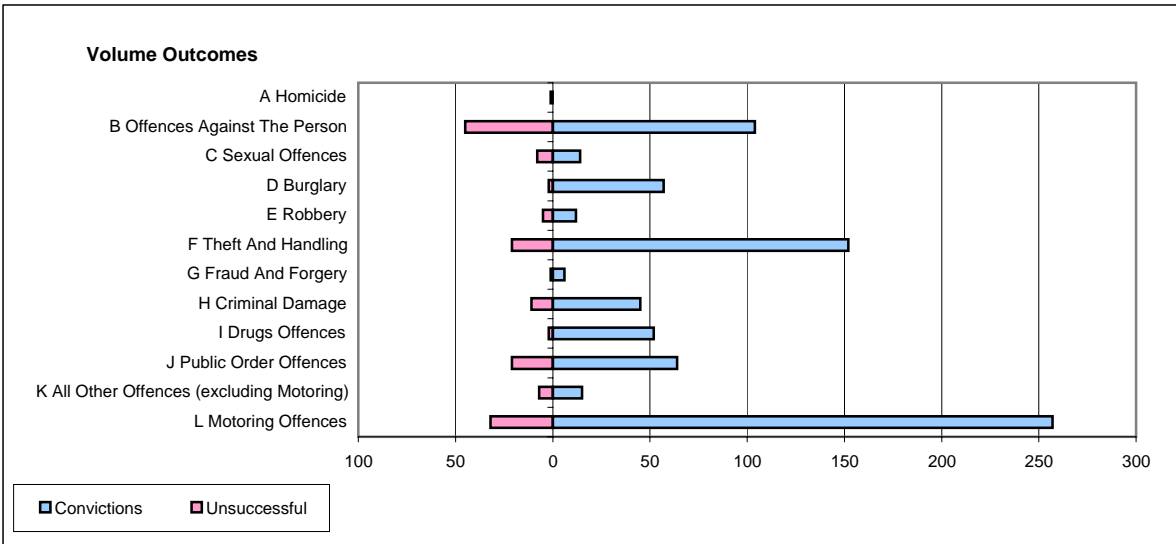
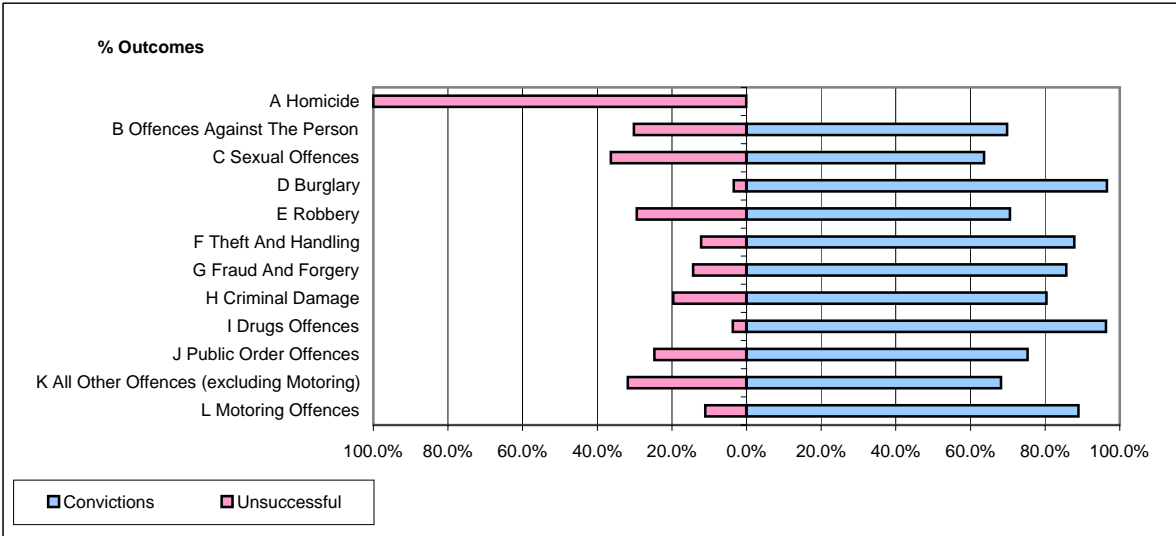


**CPS OUTCOMES BY PRINCIPAL OFFENCE CATEGORY**

**June 2006**

**P06-Cleveland**



	Convictions		Unsuccessful	
	Number of Defendants	%	Number of Defendants	%
<b>A Homicide</b>	<b>0</b>	<b>0.0%</b>	<b>1</b>	<b>100.0%</b>
<b>B Offences Against The Person</b>	<b>104</b>	<b>69.8%</b>	<b>45</b>	<b>30.2%</b>
<b>C Sexual Offences</b>	<b>14</b>	<b>63.6%</b>	<b>8</b>	<b>36.4%</b>
<b>D Burglary</b>	<b>57</b>	<b>96.6%</b>	<b>2</b>	<b>3.4%</b>
<b>E Robbery</b>	<b>12</b>	<b>70.6%</b>	<b>5</b>	<b>29.4%</b>
<b>F Theft And Handling</b>	<b>152</b>	<b>87.9%</b>	<b>21</b>	<b>12.1%</b>
<b>G Fraud And Forgery</b>	<b>6</b>	<b>85.7%</b>	<b>1</b>	<b>14.3%</b>
<b>H Criminal Damage</b>	<b>45</b>	<b>80.4%</b>	<b>11</b>	<b>19.6%</b>
<b>I Drugs Offences</b>	<b>52</b>	<b>96.3%</b>	<b>2</b>	<b>3.7%</b>
<b>J Public Order Offences</b>	<b>64</b>	<b>75.3%</b>	<b>21</b>	<b>24.7%</b>
<b>K All Other Offences (excluding Motoring)</b>	<b>15</b>	<b>68.2%</b>	<b>7</b>	<b>31.8%</b>
<b>L Motoring Offences</b>	<b>257</b>	<b>88.9%</b>	<b>32</b>	<b>11.1%</b>
<b>Admin Finalisations</b>	<b>0</b>	<b>0.0%</b>	<b>18</b>	<b>100.0%</b>
<b>TOTAL</b>	<b>778</b>	<b>81.7%</b>	<b>174</b>	<b>18.3%</b>