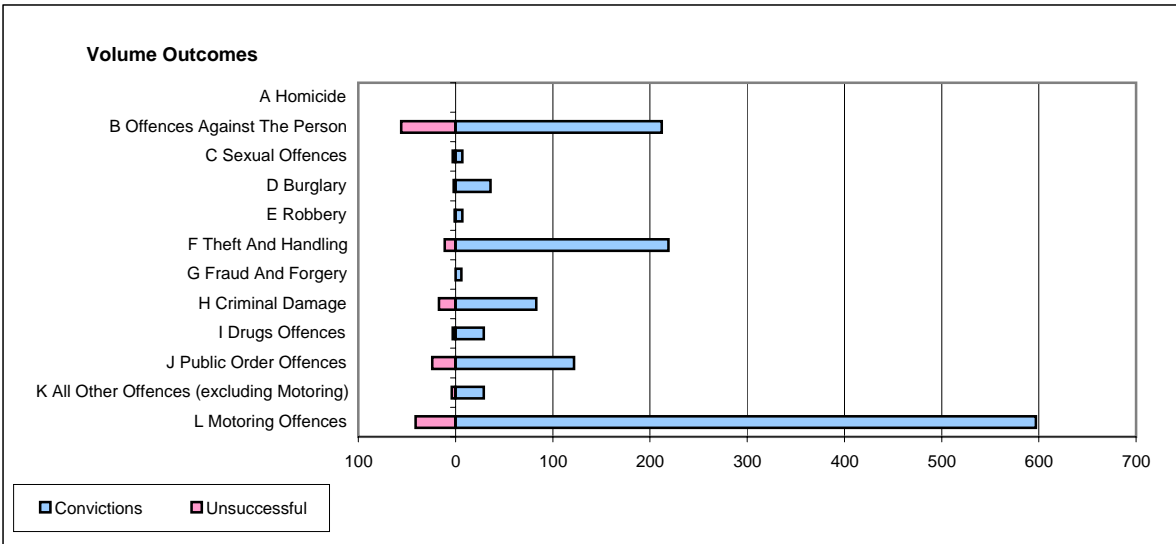
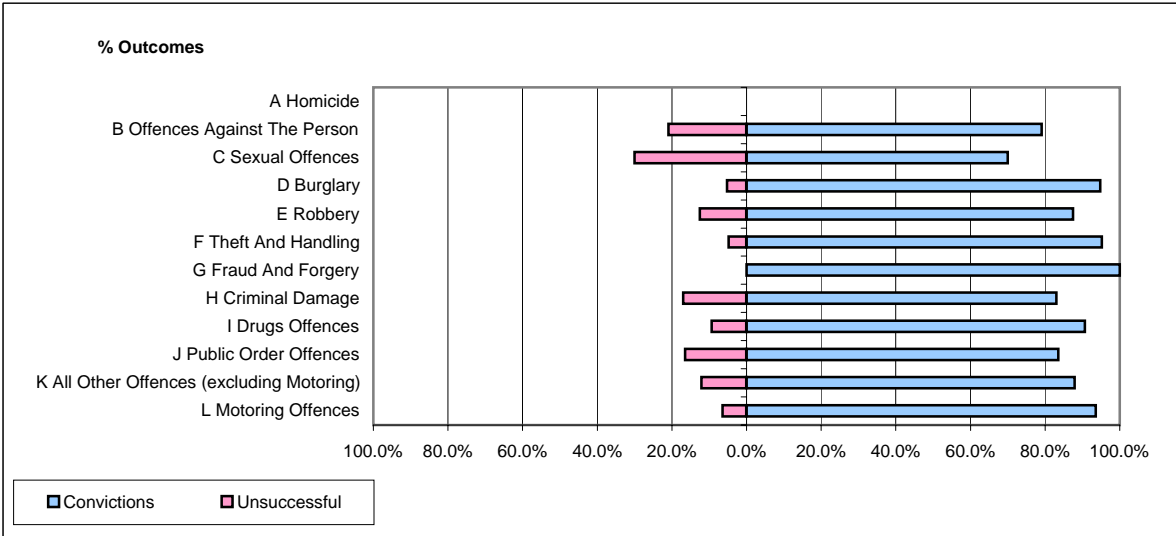


**CPS OUTCOMES BY PRINCIPAL OFFENCE CATEGORY**

**June 2006**

**P04-Cheshire**



	Convictions		Unsuccessful	
	Number of Defendants	%	Number of Defendants	%
<b>A Homicide</b>	<b>0</b>	<b>#DIV/0!</b>	<b>0</b>	<b>#DIV/0!</b>
<b>B Offences Against The Person</b>	<b>212</b>	<b>79.1%</b>	<b>56</b>	<b>20.9%</b>
<b>C Sexual Offences</b>	<b>7</b>	<b>70.0%</b>	<b>3</b>	<b>30.0%</b>
<b>D Burglary</b>	<b>36</b>	<b>94.7%</b>	<b>2</b>	<b>5.3%</b>
<b>E Robbery</b>	<b>7</b>	<b>87.5%</b>	<b>1</b>	<b>12.5%</b>
<b>F Theft And Handling</b>	<b>219</b>	<b>95.2%</b>	<b>11</b>	<b>4.8%</b>
<b>G Fraud And Forgery</b>	<b>6</b>	<b>100.0%</b>	<b>0</b>	<b>0.0%</b>
<b>H Criminal Damage</b>	<b>83</b>	<b>83.0%</b>	<b>17</b>	<b>17.0%</b>
<b>I Drugs Offences</b>	<b>29</b>	<b>90.6%</b>	<b>3</b>	<b>9.4%</b>
<b>J Public Order Offences</b>	<b>122</b>	<b>83.6%</b>	<b>24</b>	<b>16.4%</b>
<b>K All Other Offences (excluding Motoring)</b>	<b>29</b>	<b>87.9%</b>	<b>4</b>	<b>12.1%</b>
<b>L Motoring Offences</b>	<b>597</b>	<b>93.6%</b>	<b>41</b>	<b>6.4%</b>
<b>Admin Finalisations</b>	<b>0</b>	<b>0.0%</b>	<b>18</b>	<b>100.0%</b>
<b>TOTAL</b>	<b>1,347</b>	<b>88.2%</b>	<b>180</b>	<b>11.8%</b>