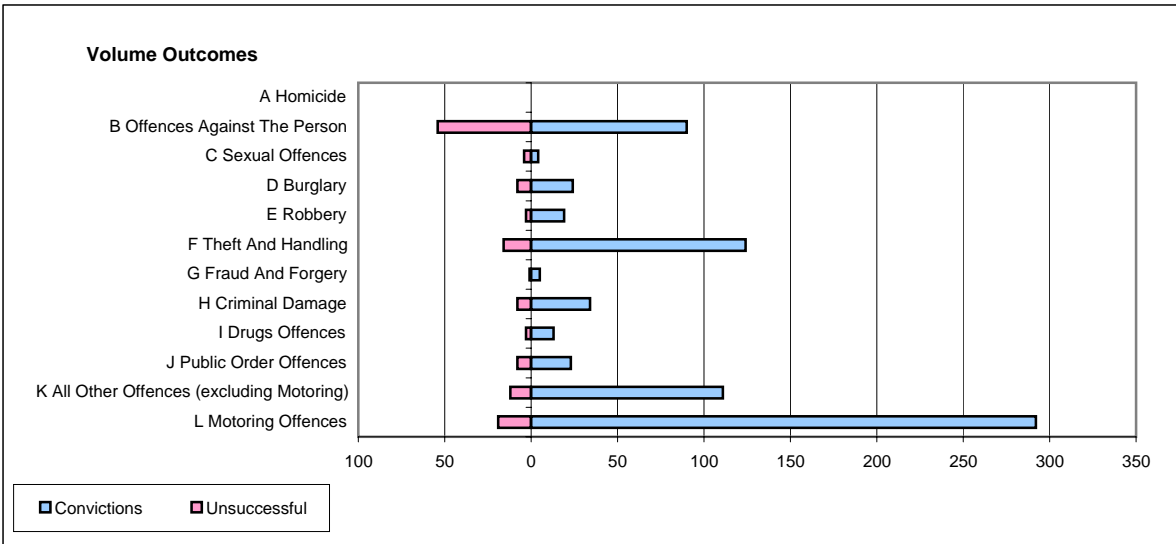
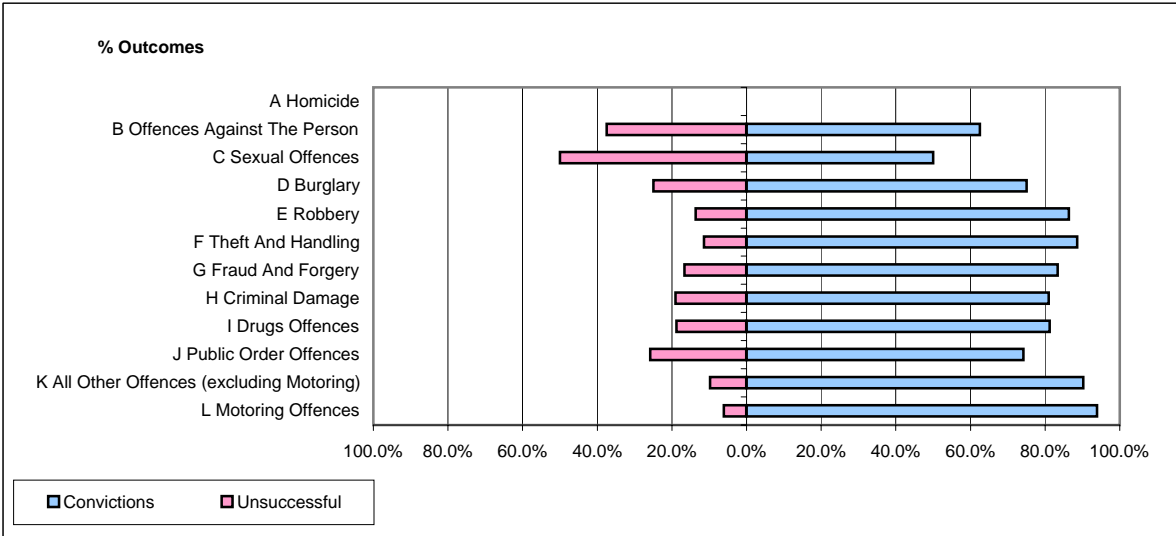


CPS OUTCOMES BY PRINCIPAL OFFENCE CATEGORY

June 2006

P02-Bedfordshire



	Convictions		Unsuccessful	
	Number of Defendants	%	Number of Defendants	%
A Homicide	0	#DIV/0!	0	#DIV/0!
B Offences Against The Person	90	62.5%	54	37.5%
C Sexual Offences	4	50.0%	4	50.0%
D Burglary	24	75.0%	8	25.0%
E Robbery	19	86.4%	3	13.6%
F Theft And Handling	124	88.6%	16	11.4%
G Fraud And Forgery	5	83.3%	1	16.7%
H Criminal Damage	34	81.0%	8	19.0%
I Drugs Offences	13	81.3%	3	18.8%
J Public Order Offences	23	74.2%	8	25.8%
K All Other Offences (excluding Motoring)	111	90.2%	12	9.8%
L Motoring Offences	292	93.9%	19	6.1%
Admin Finalisations	0	0.0%	17	100.0%
TOTAL	739	82.8%	153	17.2%