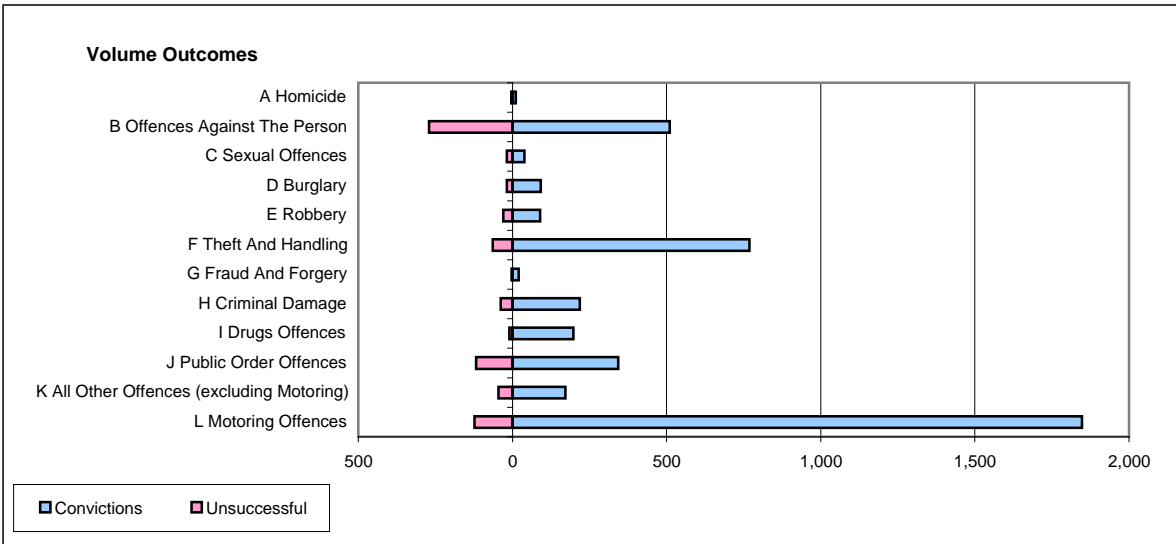
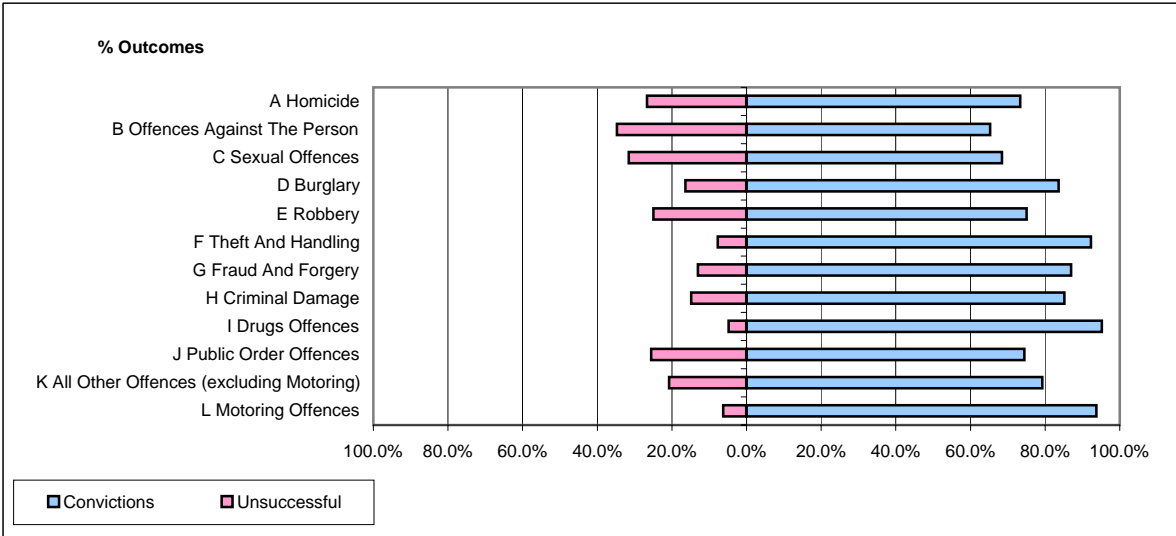


CPS OUTCOMES BY PRINCIPAL OFFENCE CATEGORY

May 2006

P41-WestMidlands



	Convictions		Unsuccessful	
	Number of Defendants	%	Number of Defendants	%
A Homicide	11	73.3%	4	26.7%
B Offences Against The Person	510	65.3%	271	34.7%
C Sexual Offences	39	68.4%	18	31.6%
D Burglary	92	83.6%	18	16.4%
E Robbery	90	75.0%	30	25.0%
F Theft And Handling	769	92.3%	64	7.7%
G Fraud And Forgery	20	87.0%	3	13.0%
H Criminal Damage	218	85.2%	38	14.8%
I Drugs Offences	198	95.2%	10	4.8%
J Public Order Offences	343	74.4%	118	25.6%
K All Other Offences (excluding Motoring)	172	79.3%	45	20.7%
L Motoring Offences	1,847	93.8%	123	6.2%
Admin Finalisations	0	0.0%	95	100.0%
TOTAL	4,309	83.7%	837	16.3%