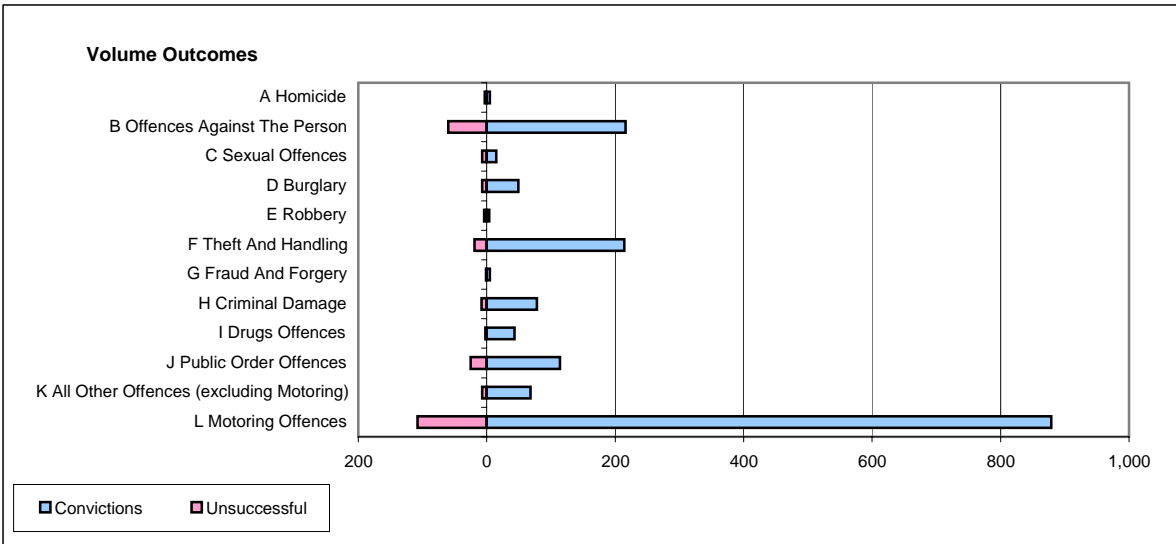
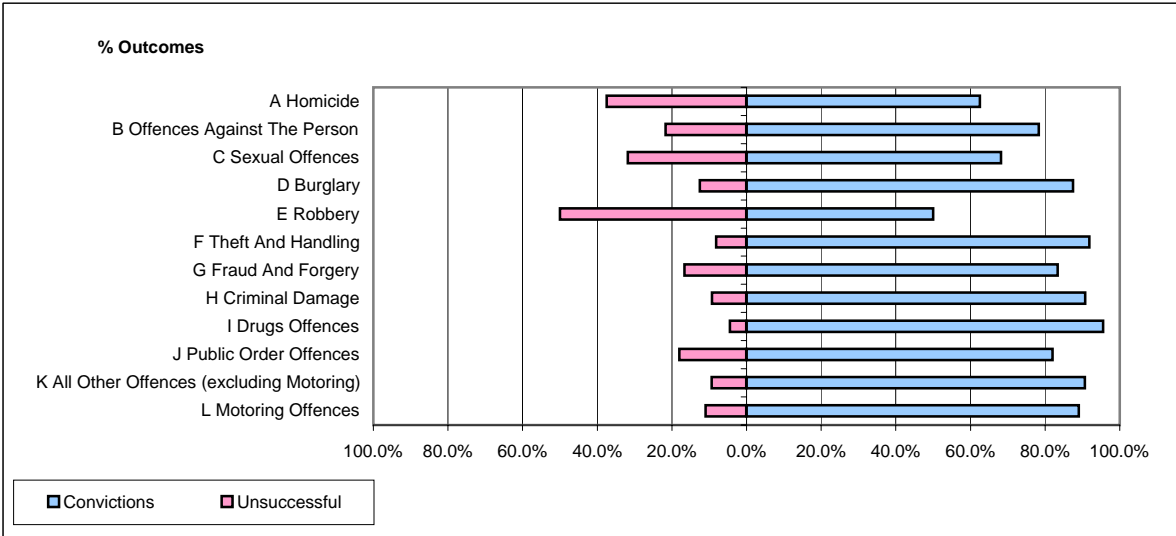


CPS OUTCOMES BY PRINCIPAL OFFENCE CATEGORY

May 2006

P40-WestMercia



	Convictions		Unsuccessful	
	Number of Defendants	%	Number of Defendants	%
A Homicide	5	62.5%	3	37.5%
B Offences Against The Person	216	78.3%	60	21.7%
C Sexual Offences	15	68.2%	7	31.8%
D Burglary	49	87.5%	7	12.5%
E Robbery	4	50.0%	4	50.0%
F Theft And Handling	214	91.8%	19	8.2%
G Fraud And Forgery	5	83.3%	1	16.7%
H Criminal Damage	78	90.7%	8	9.3%
I Drugs Offences	43	95.6%	2	4.4%
J Public Order Offences	114	82.0%	25	18.0%
K All Other Offences (excluding Motoring)	68	90.7%	7	9.3%
L Motoring Offences	879	89.1%	108	10.9%
Admin Finalisations	0	0.0%	32	100.0%
TOTAL	1,690	85.7%	283	14.3%