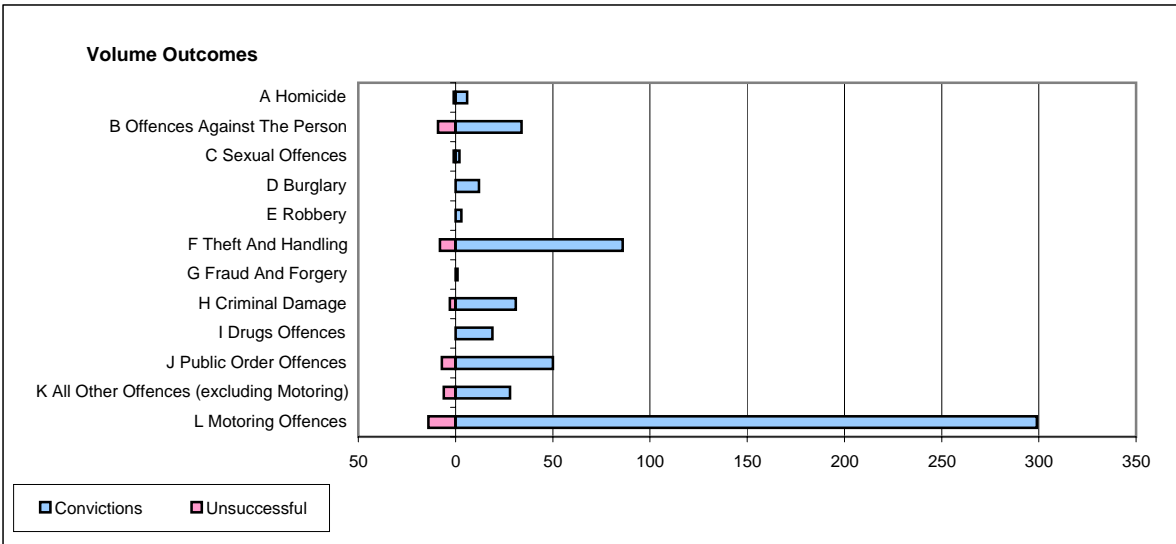
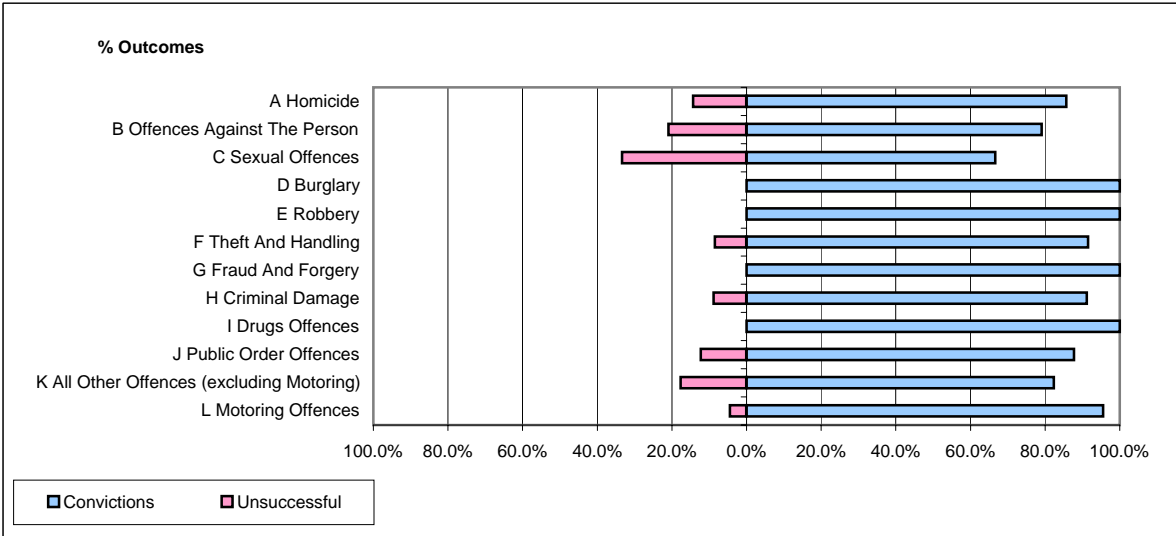


CPS OUTCOMES BY PRINCIPAL OFFENCE CATEGORY

May 2006

P39-Warwickshire



	Convictions		Unsuccessful	
	Number of Defendants	%	Number of Defendants	%
A Homicide	6	85.7%	1	14.3%
B Offences Against The Person	34	79.1%	9	20.9%
C Sexual Offences	2	66.7%	1	33.3%
D Burglary	12	100.0%	0	0.0%
E Robbery	3	100.0%	0	0.0%
F Theft And Handling	86	91.5%	8	8.5%
G Fraud And Forgery	1	100.0%	0	0.0%
H Criminal Damage	31	91.2%	3	8.8%
I Drugs Offences	19	100.0%	0	0.0%
J Public Order Offences	50	87.7%	7	12.3%
K All Other Offences (excluding Motoring)	28	82.4%	6	17.6%
L Motoring Offences	299	95.5%	14	4.5%
Admin Finalisations	0	0.0%	6	100.0%
TOTAL	571	91.2%	55	8.8%