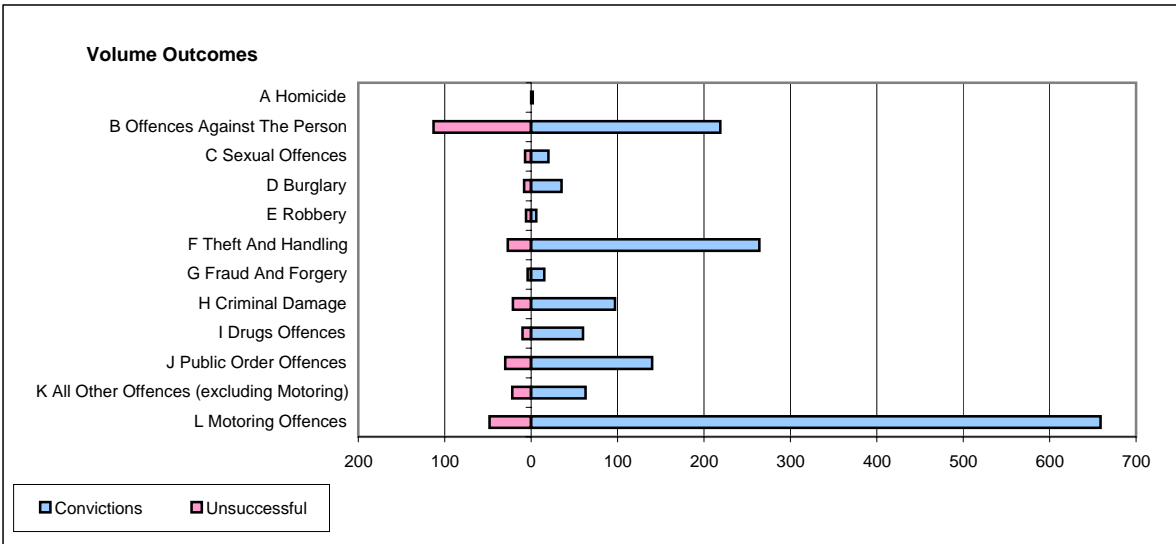
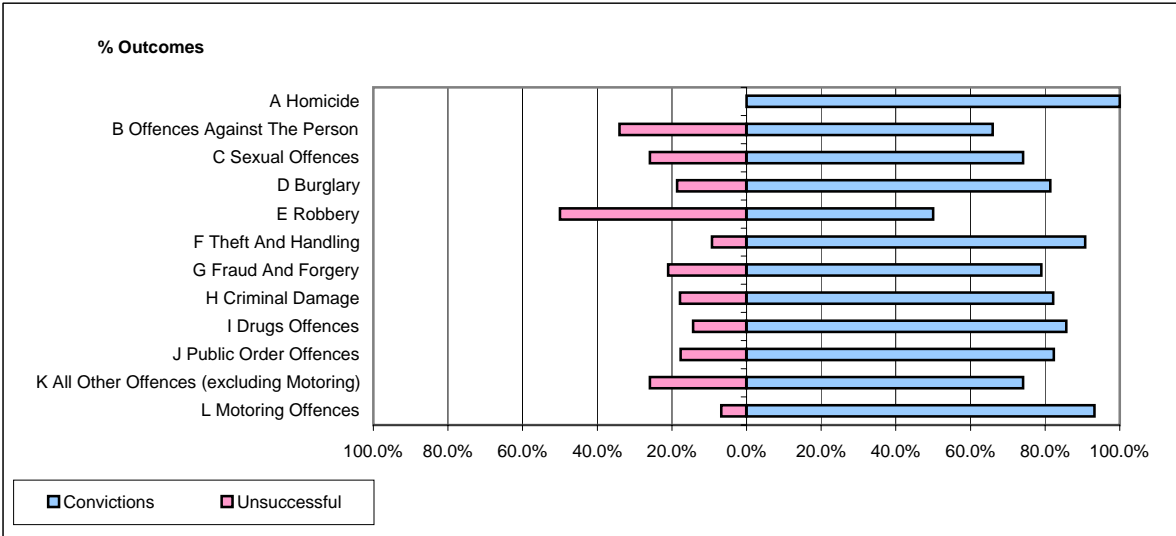


CPS OUTCOMES BY PRINCIPAL OFFENCE CATEGORY

May 2006

P37-Sussex



	Convictions		Unsuccessful	
	Number of Defendants	%	Number of Defendants	%
A Homicide	2	100.0%	0	0.0%
B Offences Against The Person	219	66.0%	113	34.0%
C Sexual Offences	20	74.1%	7	25.9%
D Burglary	35	81.4%	8	18.6%
E Robbery	6	50.0%	6	50.0%
F Theft And Handling	264	90.7%	27	9.3%
G Fraud And Forgery	15	78.9%	4	21.1%
H Criminal Damage	97	82.2%	21	17.8%
I Drugs Offences	60	85.7%	10	14.3%
J Public Order Offences	140	82.4%	30	17.6%
K All Other Offences (excluding Motoring)	63	74.1%	22	25.9%
L Motoring Offences	659	93.2%	48	6.8%
Admin Finalisations	0	0.0%	23	100.0%
TOTAL	1,580	83.2%	319	16.8%