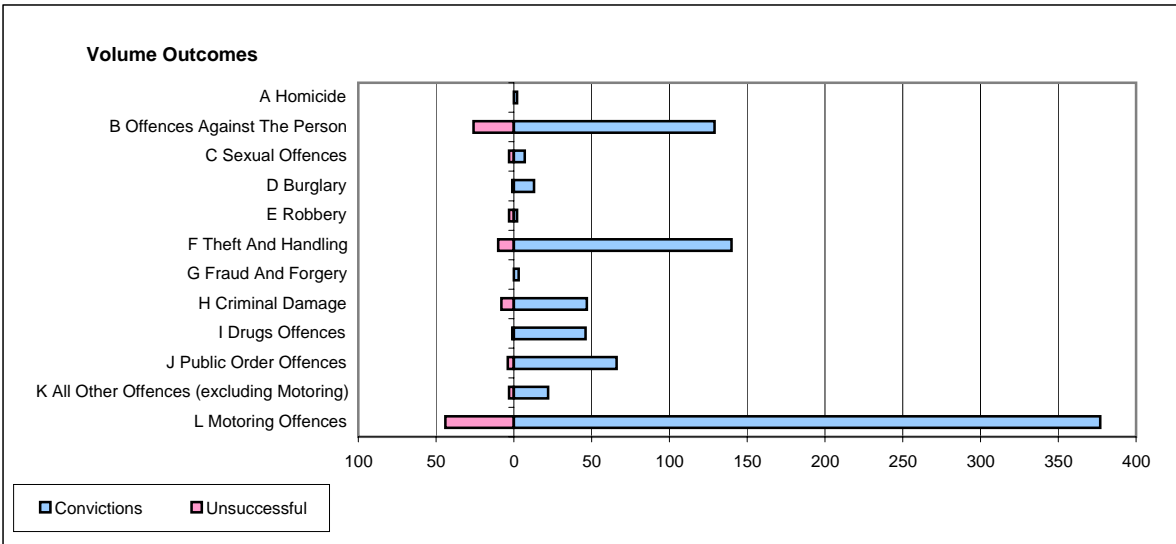
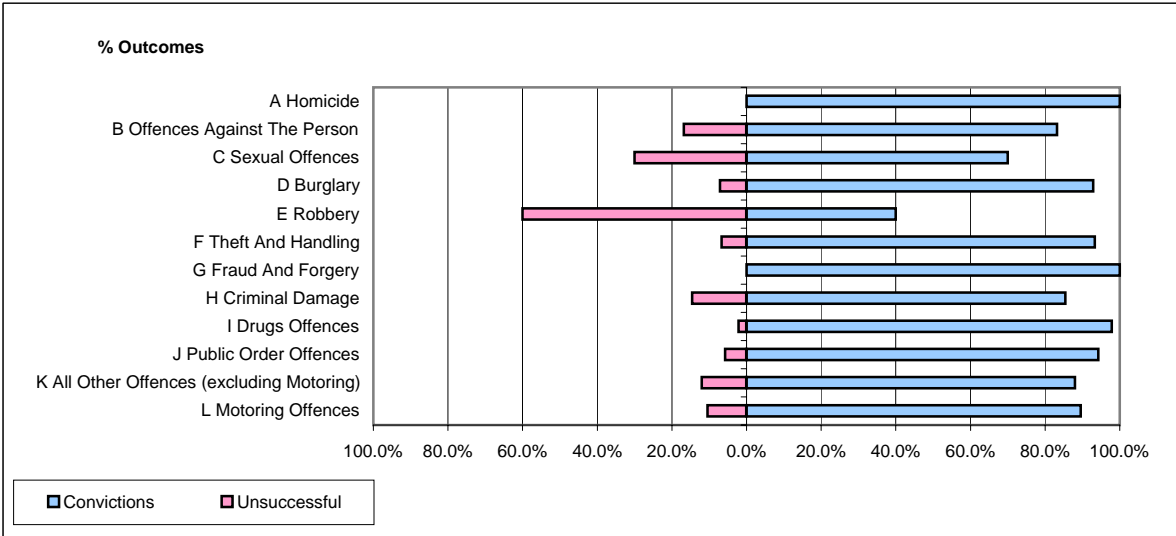


CPS OUTCOMES BY PRINCIPAL OFFENCE CATEGORY

May 2006

P35-Suffolk



	Convictions		Unsuccessful	
	Number of Defendants	%	Number of Defendants	%
A Homicide	2	100.0%	0	0.0%
B Offences Against The Person	129	83.2%	26	16.8%
C Sexual Offences	7	70.0%	3	30.0%
D Burglary	13	92.9%	1	7.1%
E Robbery	2	40.0%	3	60.0%
F Theft And Handling	140	93.3%	10	6.7%
G Fraud And Forgery	3	100.0%	0	0.0%
H Criminal Damage	47	85.5%	8	14.5%
I Drugs Offences	46	97.9%	1	2.1%
J Public Order Offences	66	94.3%	4	5.7%
K All Other Offences (excluding Motoring)	22	88.0%	3	12.0%
L Motoring Offences	377	89.5%	44	10.5%
Admin Finalisations	0	0.0%	30	100.0%
TOTAL	854	86.5%	133	13.5%