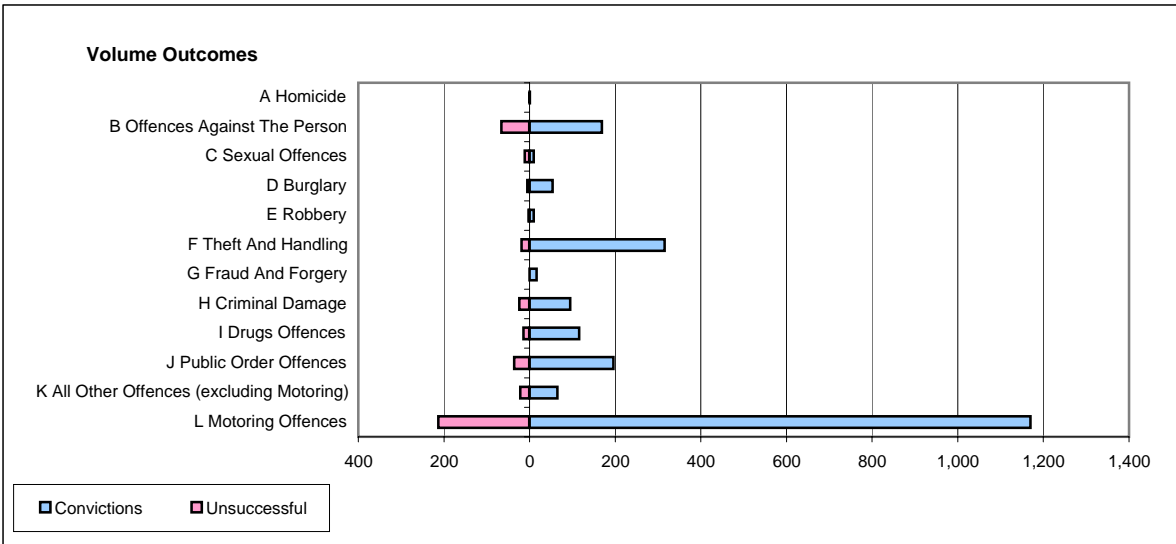
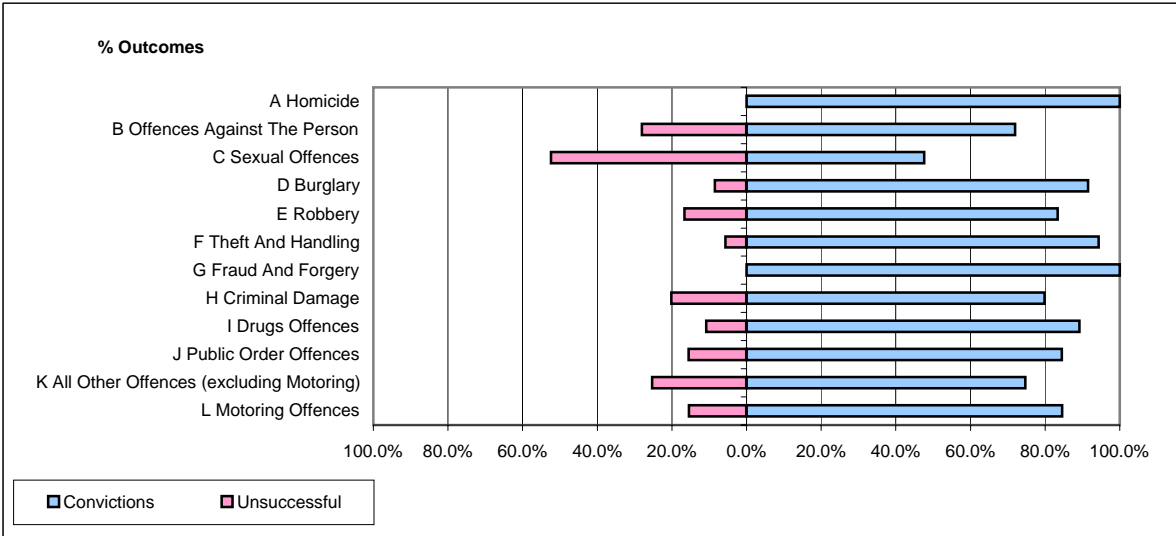


CPS OUTCOMES BY PRINCIPAL OFFENCE CATEGORY

May 2006

P32-SouthWales



	Convictions		Unsuccessful	
	Number of Defendants	%	Number of Defendants	%
A Homicide	1	100.0%	0	0.0%
B Offences Against The Person	169	71.9%	66	28.1%
C Sexual Offences	10	47.6%	11	52.4%
D Burglary	54	91.5%	5	8.5%
E Robbery	10	83.3%	2	16.7%
F Theft And Handling	315	94.3%	19	5.7%
G Fraud And Forgery	16	100.0%	0	0.0%
H Criminal Damage	95	79.8%	24	20.2%
I Drugs Offences	116	89.2%	14	10.8%
J Public Order Offences	196	84.5%	36	15.5%
K All Other Offences (excluding Motoring)	65	74.7%	22	25.3%
L Motoring Offences	1,170	84.6%	213	15.4%
Admin Finalisations	0	0.0%	73	100.0%
TOTAL	2,217	82.1%	485	17.9%