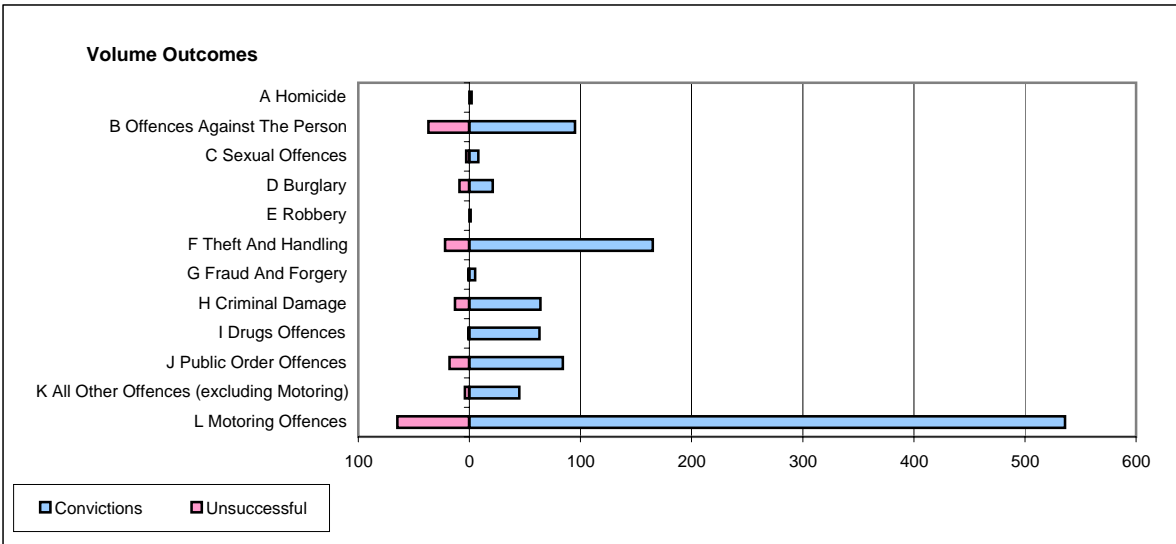
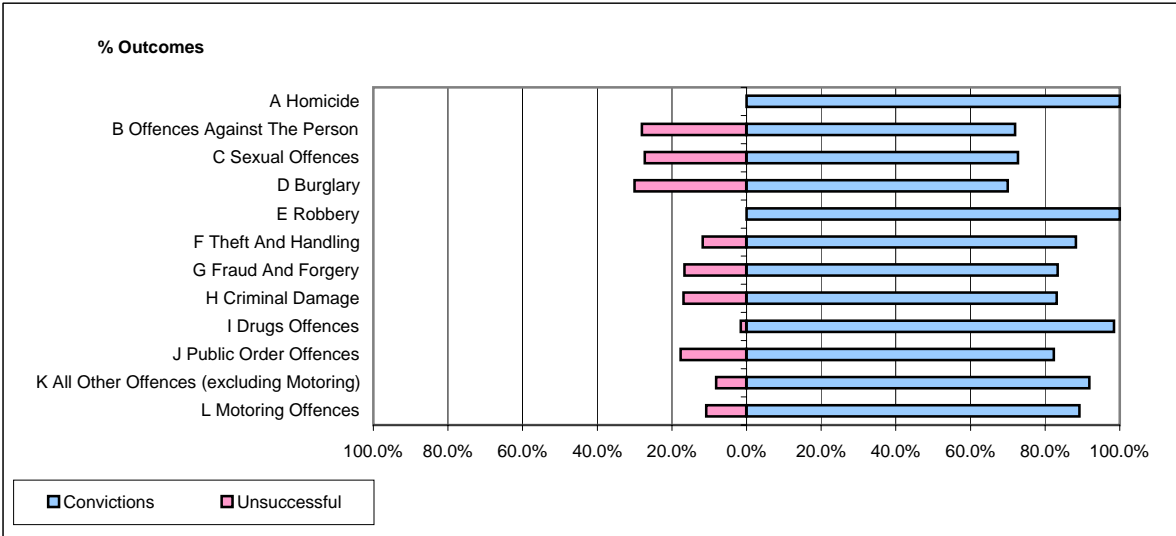


CPS OUTCOMES BY PRINCIPAL OFFENCE CATEGORY

May 2006

P26-Norfolk



	Convictions		Unsuccessful	
	Number of Defendants	%	Number of Defendants	%
A Homicide	2	100.0%	0	0.0%
B Offences Against The Person	95	72.0%	37	28.0%
C Sexual Offences	8	72.7%	3	27.3%
D Burglary	21	70.0%	9	30.0%
E Robbery	1	100.0%	0	0.0%
F Theft And Handling	165	88.2%	22	11.8%
G Fraud And Forgery	5	83.3%	1	16.7%
H Criminal Damage	64	83.1%	13	16.9%
I Drugs Offences	63	98.4%	1	1.6%
J Public Order Offences	84	82.4%	18	17.6%
K All Other Offences (excluding Motoring)	45	91.8%	4	8.2%
L Motoring Offences	536	89.2%	65	10.8%
Admin Finalisations	0	0.0%	28	100.0%
TOTAL	1,089	84.4%	201	15.6%