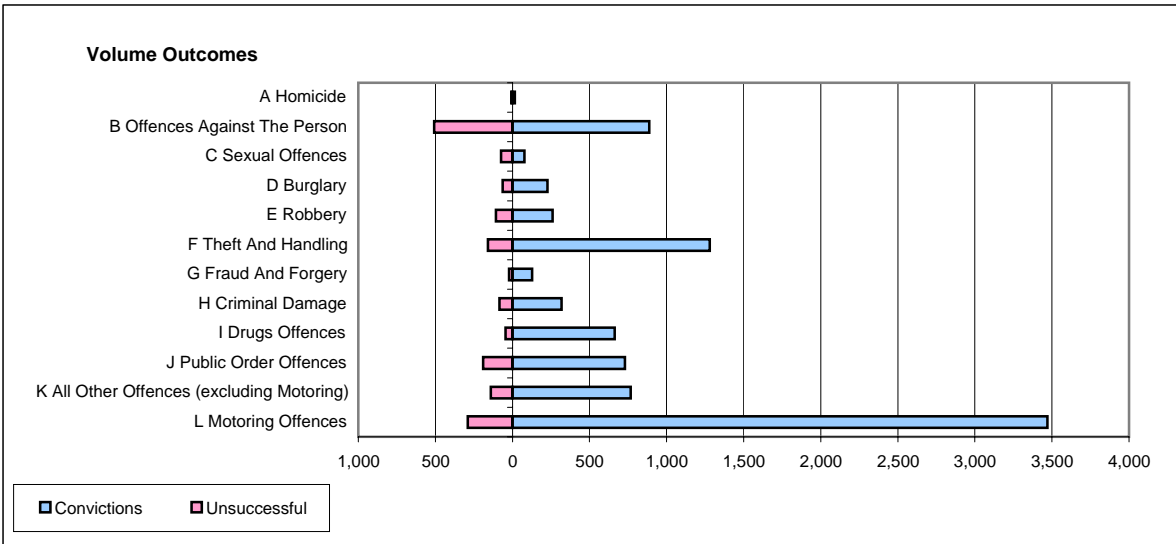
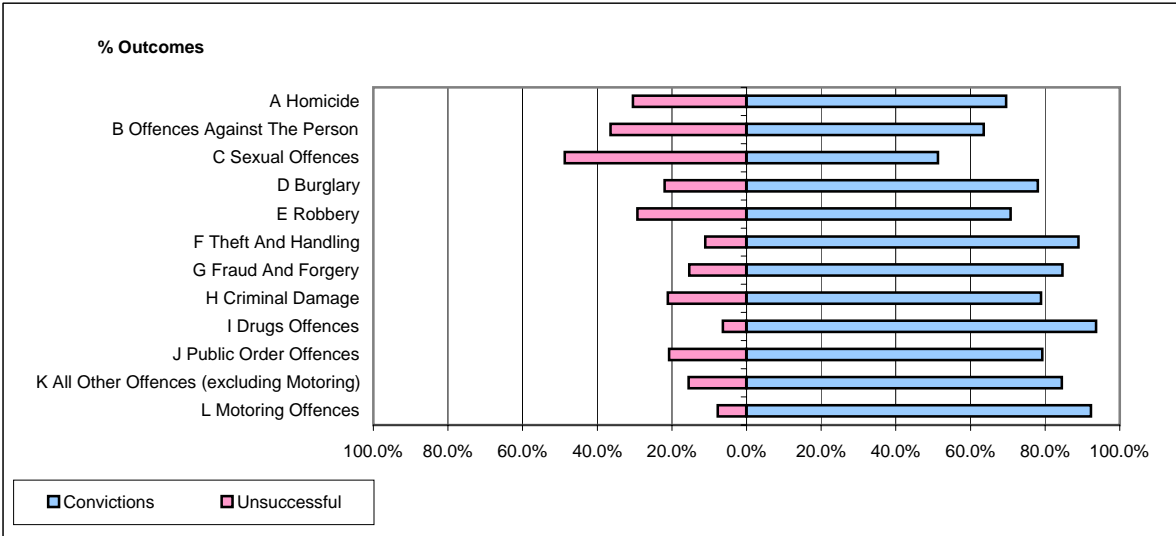


CPS OUTCOMES BY PRINCIPAL OFFENCE CATEGORY

May 2006

P25-Metropolitan&City



	Convictions		Unsuccessful	
	Number of Defendants	%	Number of Defendants	%
A Homicide	16	69.6%	7	30.4%
B Offences Against The Person	887	63.6%	508	36.4%
C Sexual Offences	78	51.3%	74	48.7%
D Burglary	228	78.1%	64	21.9%
E Robbery	261	70.7%	108	29.3%
F Theft And Handling	1,280	89.0%	159	11.0%
G Fraud And Forgery	127	84.7%	23	15.3%
H Criminal Damage	318	78.9%	85	21.1%
I Drugs Offences	664	93.7%	45	6.3%
J Public Order Offences	729	79.2%	191	20.8%
K All Other Offences (excluding Motoring)	766	84.5%	141	15.5%
L Motoring Offences	3,471	92.3%	290	7.7%
Admin Finalisations	0	0.0%	527	100.0%
TOTAL	8,825	79.9%	2,222	20.1%