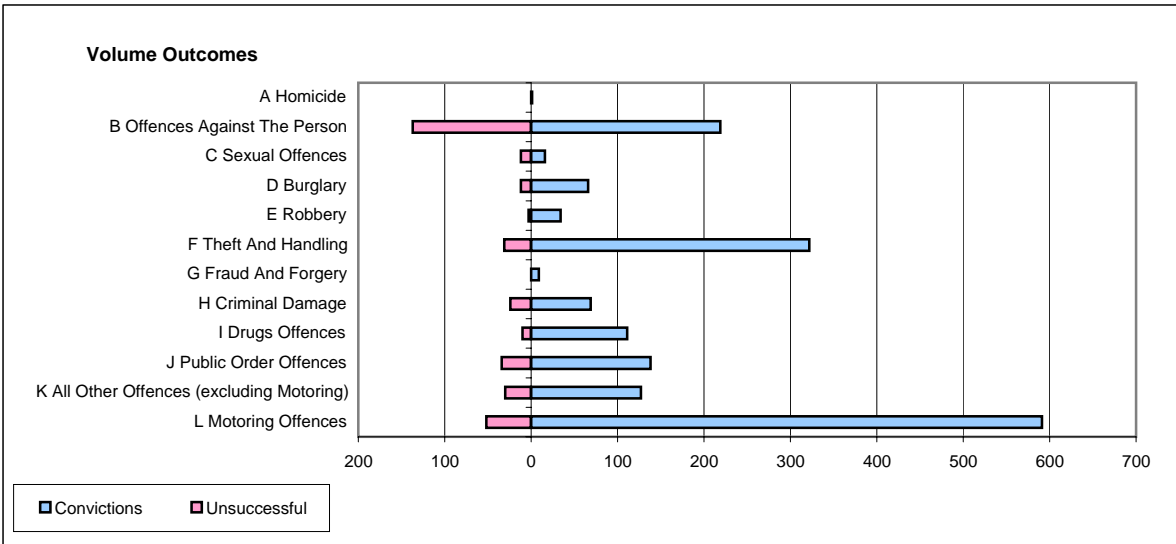
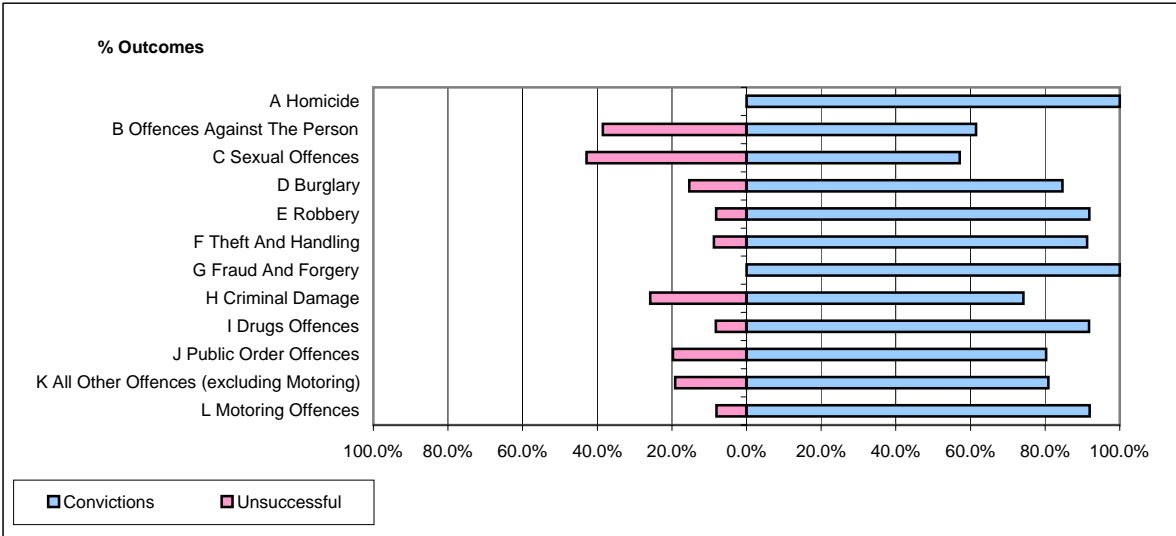


**CPS OUTCOMES BY PRINCIPAL OFFENCE CATEGORY**

**May 2006**

**P24-Merseyside**



	Convictions		Unsuccessful	
	Number of Defendants	%	Number of Defendants	%
<b>A Homicide</b>	<b>1</b>	<b>100.0%</b>	<b>0</b>	<b>0.0%</b>
<b>B Offences Against The Person</b>	<b>219</b>	<b>61.5%</b>	<b>137</b>	<b>38.5%</b>
<b>C Sexual Offences</b>	<b>16</b>	<b>57.1%</b>	<b>12</b>	<b>42.9%</b>
<b>D Burglary</b>	<b>66</b>	<b>84.6%</b>	<b>12</b>	<b>15.4%</b>
<b>E Robbery</b>	<b>34</b>	<b>91.9%</b>	<b>3</b>	<b>8.1%</b>
<b>F Theft And Handling</b>	<b>322</b>	<b>91.2%</b>	<b>31</b>	<b>8.8%</b>
<b>G Fraud And Forgery</b>	<b>9</b>	<b>100.0%</b>	<b>0</b>	<b>0.0%</b>
<b>H Criminal Damage</b>	<b>69</b>	<b>74.2%</b>	<b>24</b>	<b>25.8%</b>
<b>I Drugs Offences</b>	<b>111</b>	<b>91.7%</b>	<b>10</b>	<b>8.3%</b>
<b>J Public Order Offences</b>	<b>138</b>	<b>80.2%</b>	<b>34</b>	<b>19.8%</b>
<b>K All Other Offences (excluding Motoring)</b>	<b>127</b>	<b>80.9%</b>	<b>30</b>	<b>19.1%</b>
<b>L Motoring Offences</b>	<b>591</b>	<b>91.9%</b>	<b>52</b>	<b>8.1%</b>
<b>Admin Finalisations</b>	<b>0</b>	<b>0.0%</b>	<b>38</b>	<b>100.0%</b>
<b>TOTAL</b>	<b>1,703</b>	<b>81.6%</b>	<b>383</b>	<b>18.4%</b>