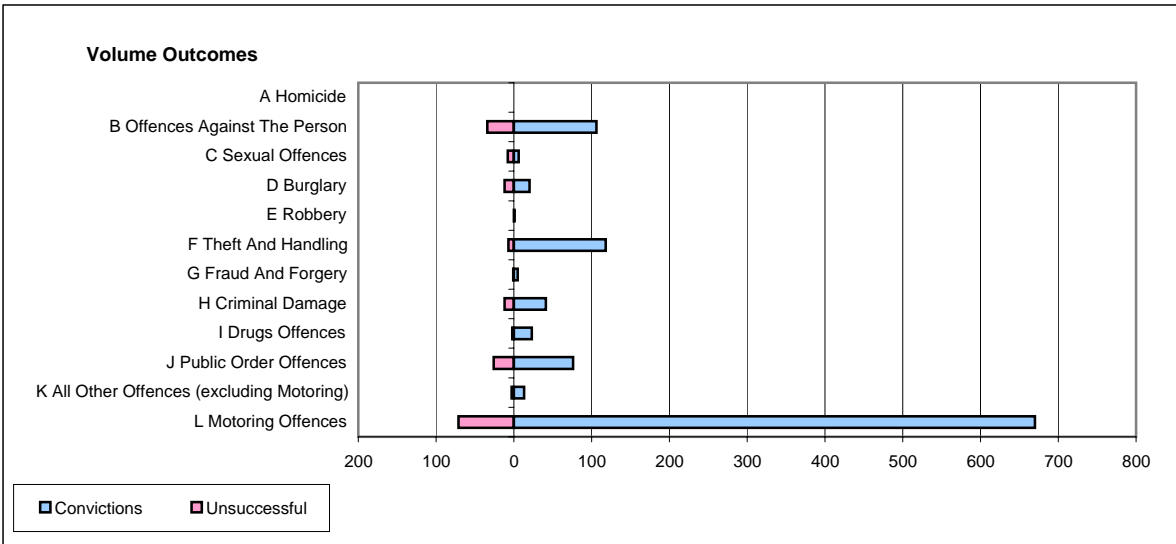
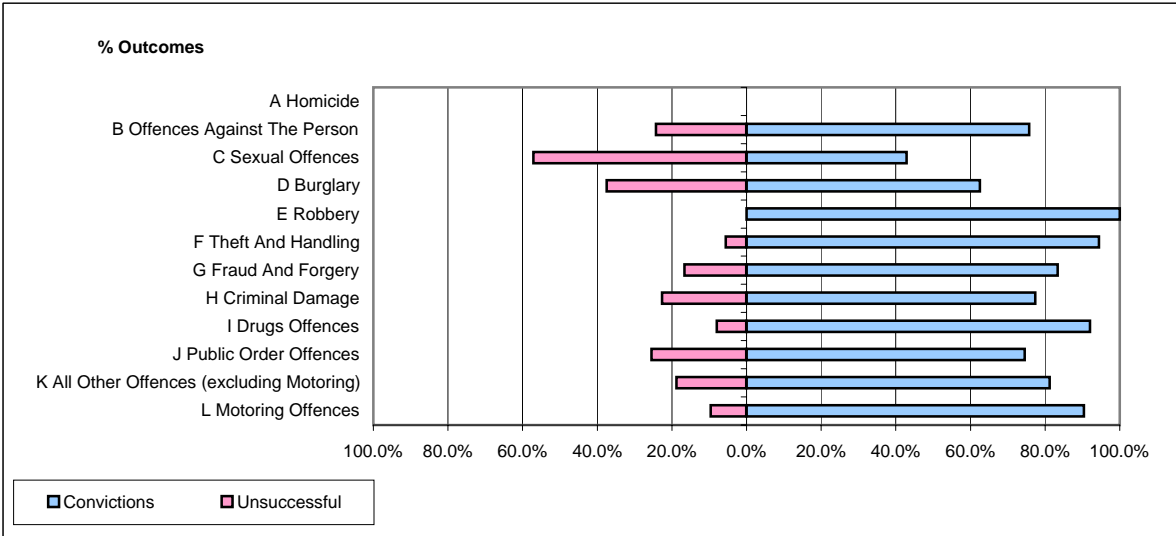


CPS OUTCOMES BY PRINCIPAL OFFENCE CATEGORY

May 2006

P23-Lincolnshire



	Convictions		Unsuccessful	
	Number of Defendants	%	Number of Defendants	%
A Homicide	0	#DIV/0!	0	#DIV/0!
B Offences Against The Person	106	75.7%	34	24.3%
C Sexual Offences	6	42.9%	8	57.1%
D Burglary	20	62.5%	12	37.5%
E Robbery	1	100.0%	0	0.0%
F Theft And Handling	118	94.4%	7	5.6%
G Fraud And Forgery	5	83.3%	1	16.7%
H Criminal Damage	41	77.4%	12	22.6%
I Drugs Offences	23	92.0%	2	8.0%
J Public Order Offences	76	74.5%	26	25.5%
K All Other Offences (excluding Motoring)	13	81.3%	3	18.8%
L Motoring Offences	670	90.4%	71	9.6%
Admin Finalisations	0	0.0%	10	100.0%
TOTAL	1,079	85.3%	186	14.7%