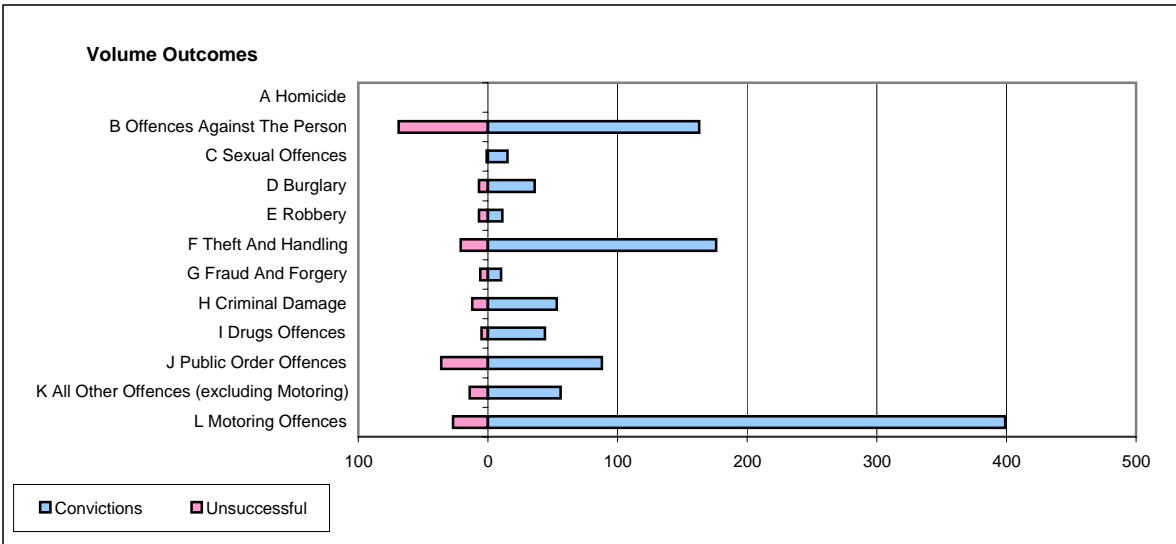
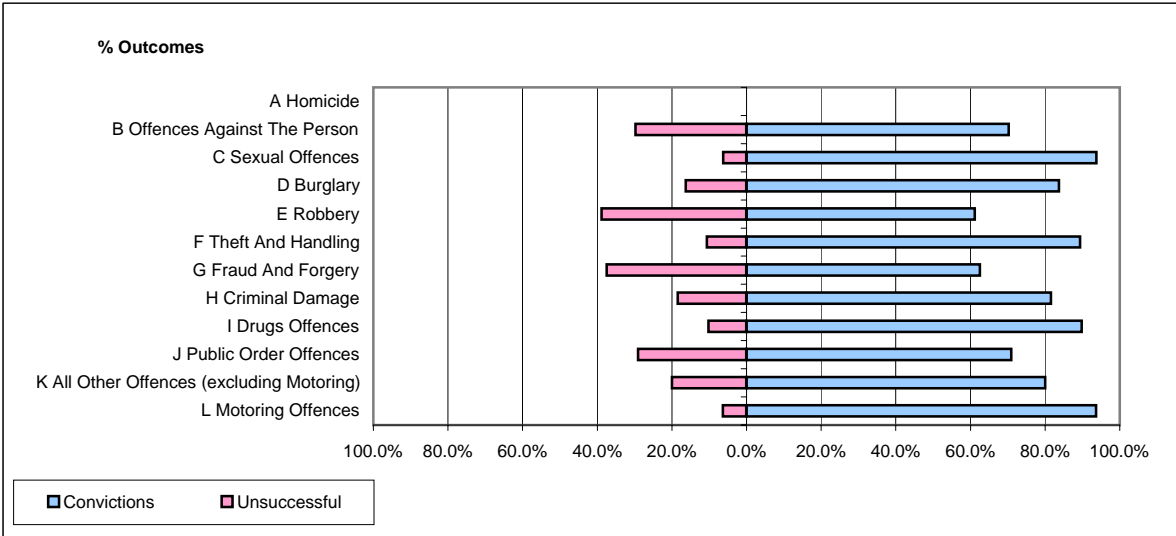


CPS OUTCOMES BY PRINCIPAL OFFENCE CATEGORY

May 2006

P22-Leicestershire



	Convictions		Unsuccessful	
	Number of Defendants	%	Number of Defendants	%
A Homicide	0	#DIV/0!	0	#DIV/0!
B Offences Against The Person	163	70.3%	69	29.7%
C Sexual Offences	15	93.8%	1	6.3%
D Burglary	36	83.7%	7	16.3%
E Robbery	11	61.1%	7	38.9%
F Theft And Handling	176	89.3%	21	10.7%
G Fraud And Forgery	10	62.5%	6	37.5%
H Criminal Damage	53	81.5%	12	18.5%
I Drugs Offences	44	89.8%	5	10.2%
J Public Order Offences	88	71.0%	36	29.0%
K All Other Offences (excluding Motoring)	56	80.0%	14	20.0%
L Motoring Offences	399	93.7%	27	6.3%
Admin Finalisations	0	0.0%	35	100.0%
TOTAL	1,051	81.4%	240	18.6%