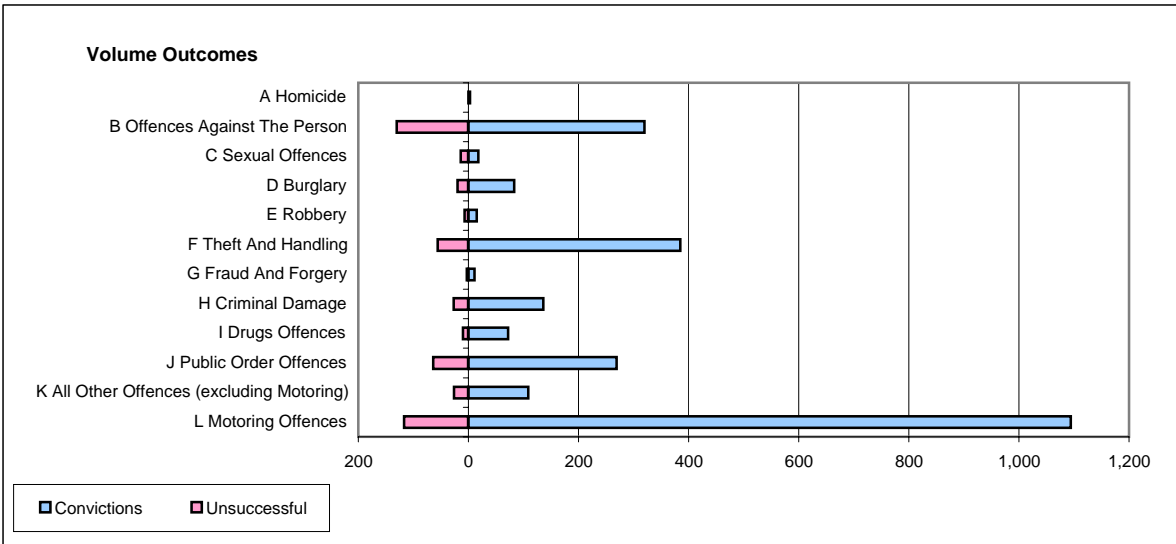
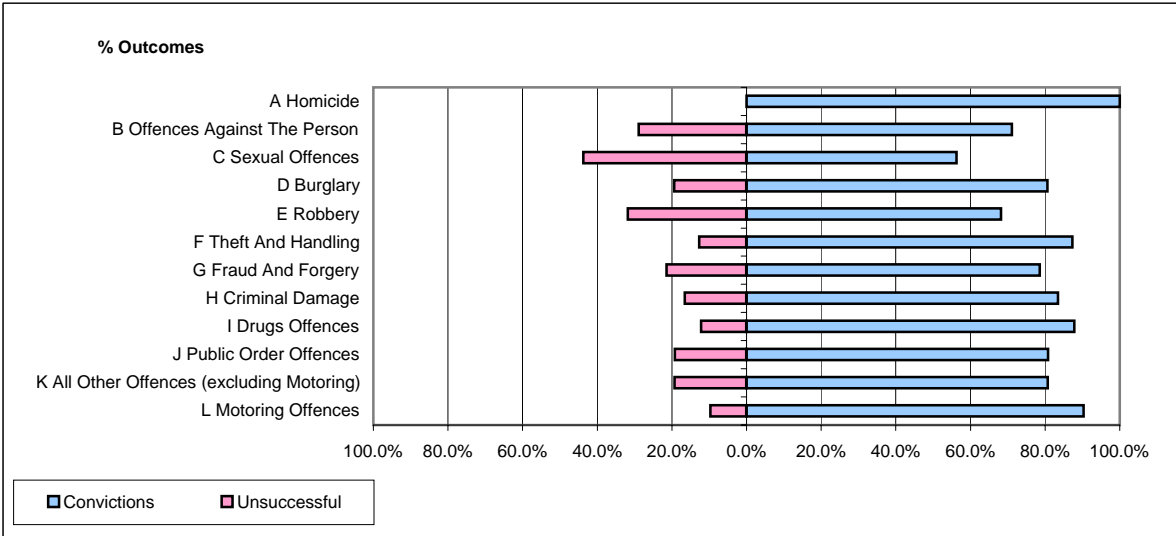


CPS OUTCOMES BY PRINCIPAL OFFENCE CATEGORY

May 2006

P21-Lancashire



	Convictions		Unsuccessful	
	Number of Defendants	%	Number of Defendants	%
A Homicide	3	100.0%	0	0.0%
B Offences Against The Person	320	71.1%	130	28.9%
C Sexual Offences	18	56.3%	14	43.8%
D Burglary	83	80.6%	20	19.4%
E Robbery	15	68.2%	7	31.8%
F Theft And Handling	385	87.3%	56	12.7%
G Fraud And Forgery	11	78.6%	3	21.4%
H Criminal Damage	136	83.4%	27	16.6%
I Drugs Offences	72	87.8%	10	12.2%
J Public Order Offences	269	80.8%	64	19.2%
K All Other Offences (excluding Motoring)	109	80.7%	26	19.3%
L Motoring Offences	1,094	90.3%	117	9.7%
Admin Finalisations	0	0.0%	63	100.0%
TOTAL	2,515	82.4%	537	17.6%