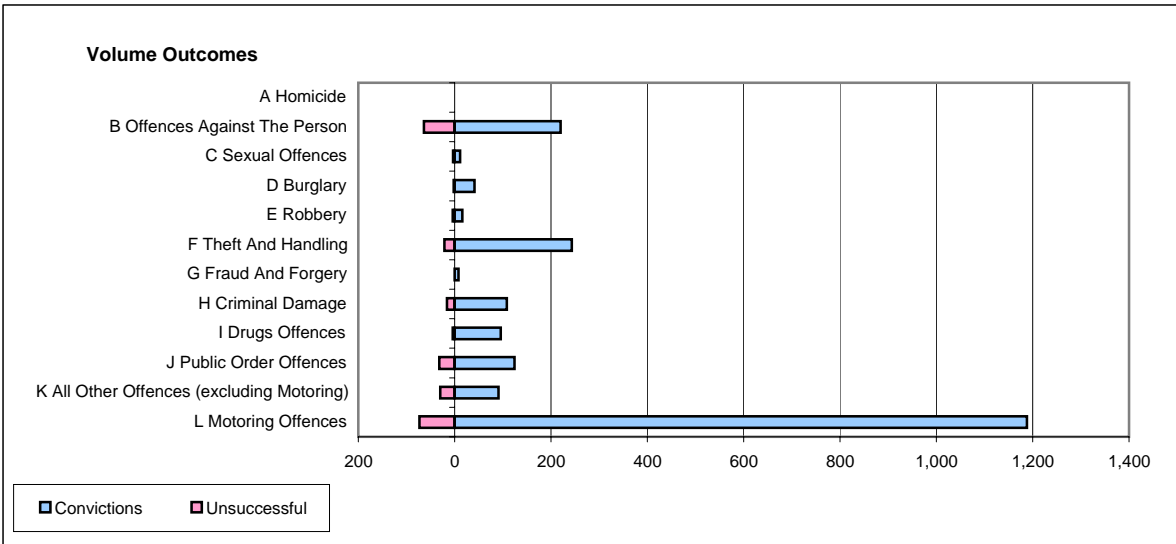
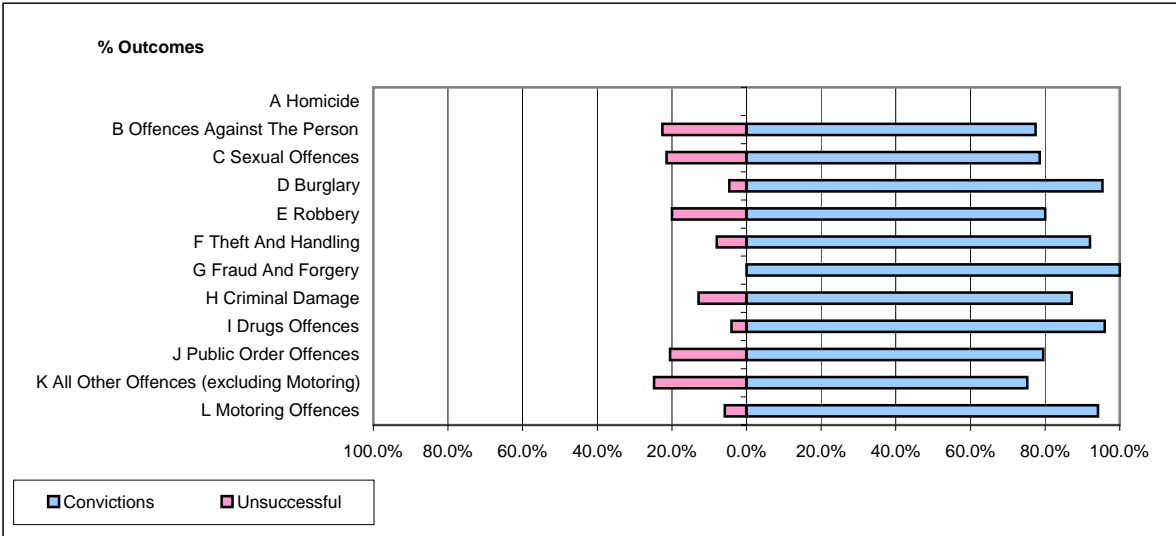


CPS OUTCOMES BY PRINCIPAL OFFENCE CATEGORY

May 2006

P20-Kent



	Convictions		Unsuccessful	
	Number of Defendants	%	Number of Defendants	%
A Homicide	0	#DIV/0!	0	#DIV/0!
B Offences Against The Person	220	77.5%	64	22.5%
C Sexual Offences	11	78.6%	3	21.4%
D Burglary	41	95.3%	2	4.7%
E Robbery	16	80.0%	4	20.0%
F Theft And Handling	243	92.0%	21	8.0%
G Fraud And Forgery	8	100.0%	0	0.0%
H Criminal Damage	108	87.1%	16	12.9%
I Drugs Offences	96	96.0%	4	4.0%
J Public Order Offences	124	79.5%	32	20.5%
K All Other Offences (excluding Motoring)	91	75.2%	30	24.8%
L Motoring Offences	1,188	94.2%	73	5.8%
Admin Finalisations	0	0.0%	25	100.0%
TOTAL	2,146	88.7%	274	11.3%