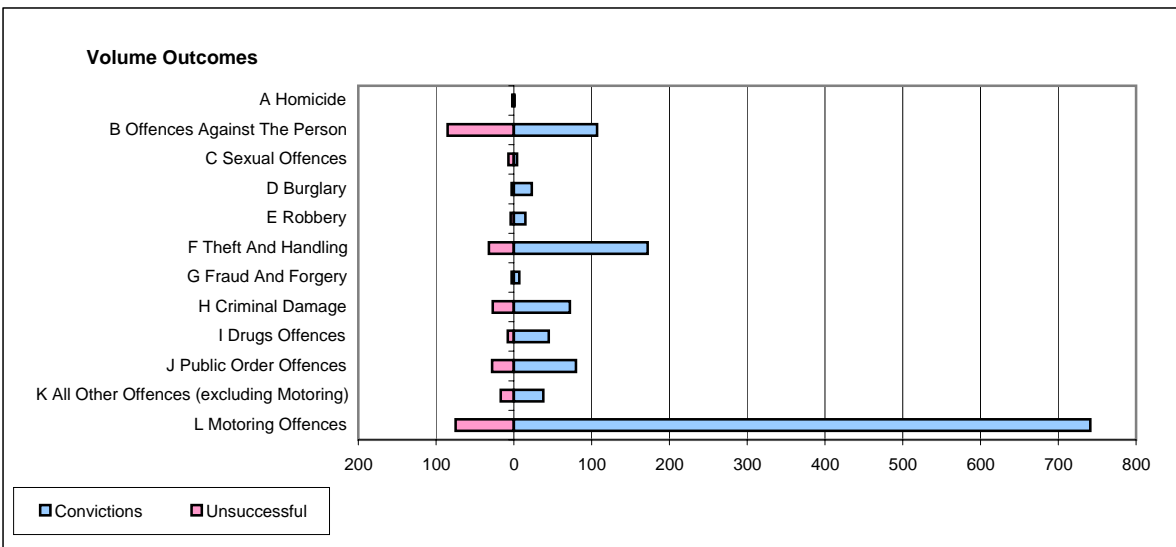
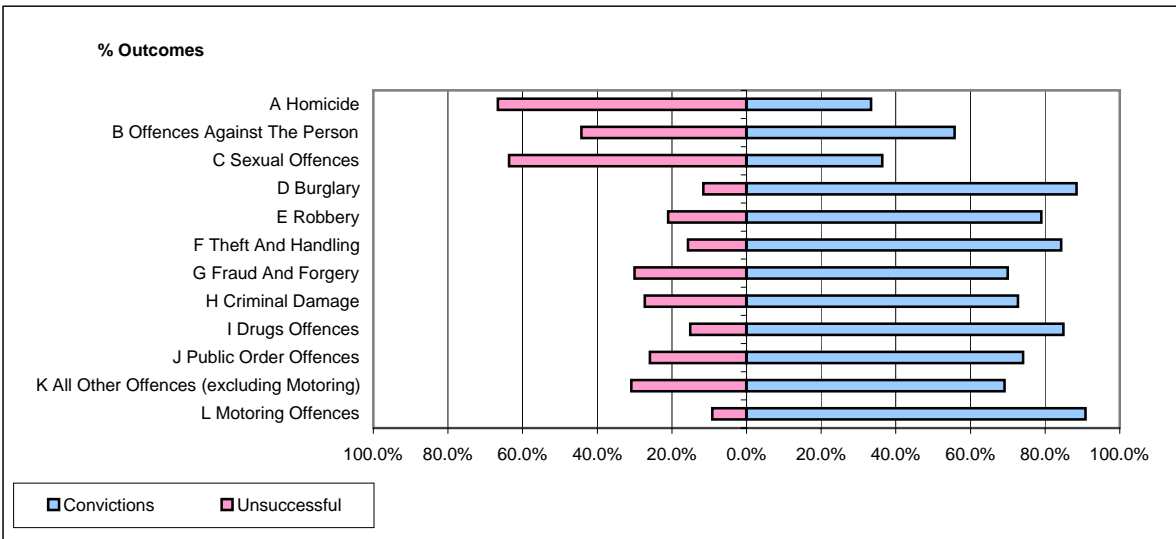


**CPS OUTCOMES BY PRINCIPAL OFFENCE CATEGORY**

**May 2006**

**P18-Hertfordshire**



	Convictions		Unsuccessful	
	Number of Defendants	%	Number of Defendants	%
<b>A Homicide</b>	<b>1</b>	<b>33.3%</b>	<b>2</b>	<b>66.7%</b>
<b>B Offences Against The Person</b>	<b>107</b>	<b>55.7%</b>	<b>85</b>	<b>44.3%</b>
<b>C Sexual Offences</b>	<b>4</b>	<b>36.4%</b>	<b>7</b>	<b>63.6%</b>
<b>D Burglary</b>	<b>23</b>	<b>88.5%</b>	<b>3</b>	<b>11.5%</b>
<b>E Robbery</b>	<b>15</b>	<b>78.9%</b>	<b>4</b>	<b>21.1%</b>
<b>F Theft And Handling</b>	<b>172</b>	<b>84.3%</b>	<b>32</b>	<b>15.7%</b>
<b>G Fraud And Forgery</b>	<b>7</b>	<b>70.0%</b>	<b>3</b>	<b>30.0%</b>
<b>H Criminal Damage</b>	<b>72</b>	<b>72.7%</b>	<b>27</b>	<b>27.3%</b>
<b>I Drugs Offences</b>	<b>45</b>	<b>84.9%</b>	<b>8</b>	<b>15.1%</b>
<b>J Public Order Offences</b>	<b>80</b>	<b>74.1%</b>	<b>28</b>	<b>25.9%</b>
<b>K All Other Offences (excluding Motoring)</b>	<b>38</b>	<b>69.1%</b>	<b>17</b>	<b>30.9%</b>
<b>L Motoring Offences</b>	<b>741</b>	<b>90.8%</b>	<b>75</b>	<b>9.2%</b>
<b>Admin Finalisations</b>	<b>0</b>	<b>0.0%</b>	<b>18</b>	<b>100.0%</b>
<b>TOTAL</b>	<b>1,305</b>	<b>80.9%</b>	<b>309</b>	<b>19.1%</b>