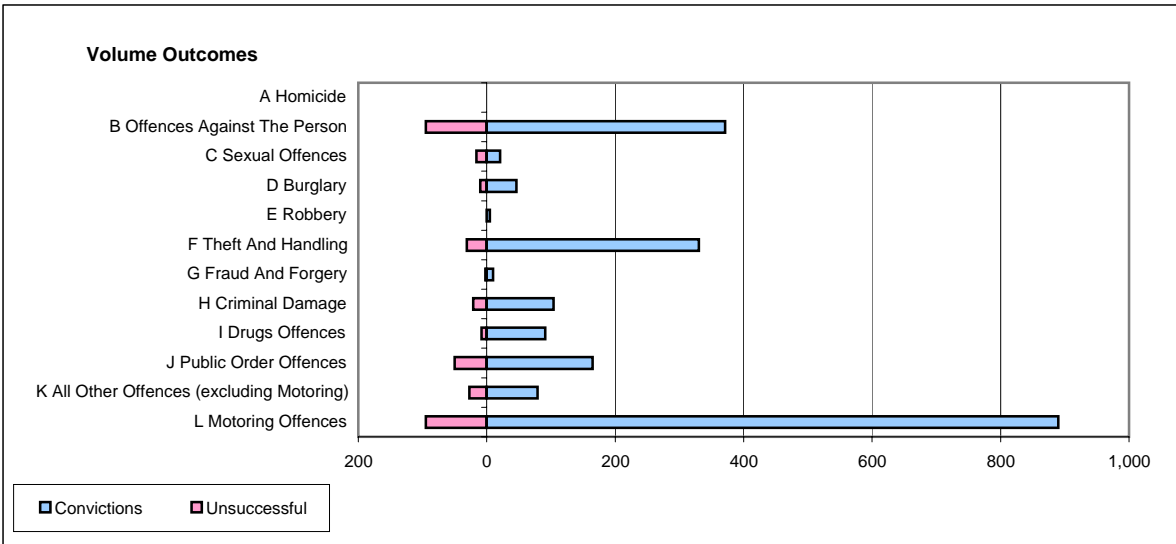
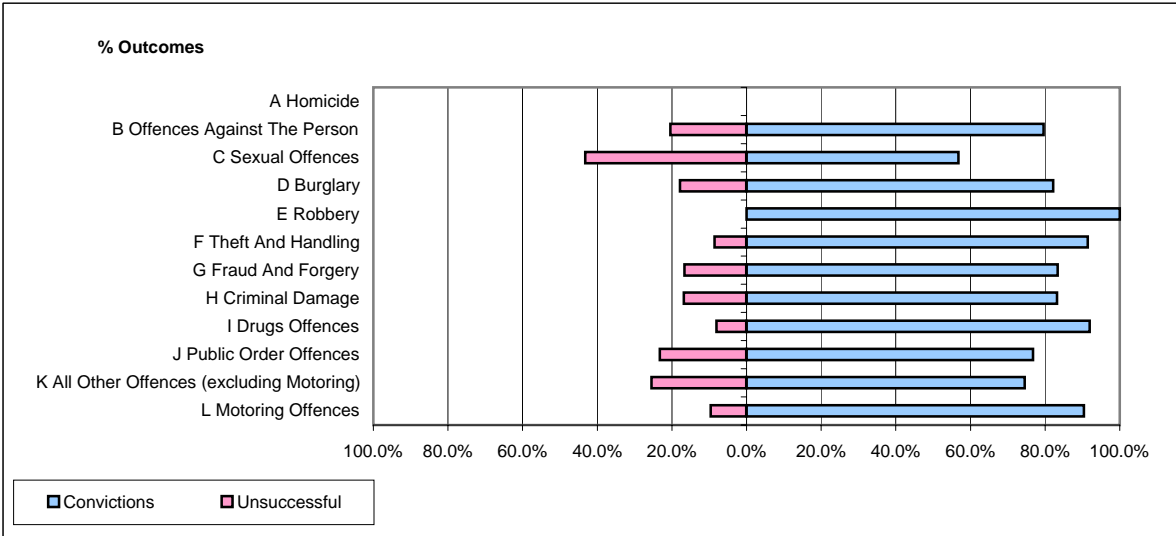


**CPS OUTCOMES BY PRINCIPAL OFFENCE CATEGORY**

**May 2006**

**P17-Hampshire**



	Convictions		Unsuccessful	
	Number of Defendants	%	Number of Defendants	%
<b>A Homicide</b>	0	#DIV/0!	0	#DIV/0!
<b>B Offences Against The Person</b>	371	79.6%	95	20.4%
<b>C Sexual Offences</b>	21	56.8%	16	43.2%
<b>D Burglary</b>	46	82.1%	10	17.9%
<b>E Robbery</b>	5	100.0%	0	0.0%
<b>F Theft And Handling</b>	330	91.4%	31	8.6%
<b>G Fraud And Forgery</b>	10	83.3%	2	16.7%
<b>H Criminal Damage</b>	104	83.2%	21	16.8%
<b>I Drugs Offences</b>	91	91.9%	8	8.1%
<b>J Public Order Offences</b>	165	76.7%	50	23.3%
<b>K All Other Offences (excluding Motoring)</b>	79	74.5%	27	25.5%
<b>L Motoring Offences</b>	890	90.4%	95	9.6%
<b>Admin Finalisations</b>	0	0.0%	46	100.0%
<b>TOTAL</b>	2,112	84.0%	401	16.0%