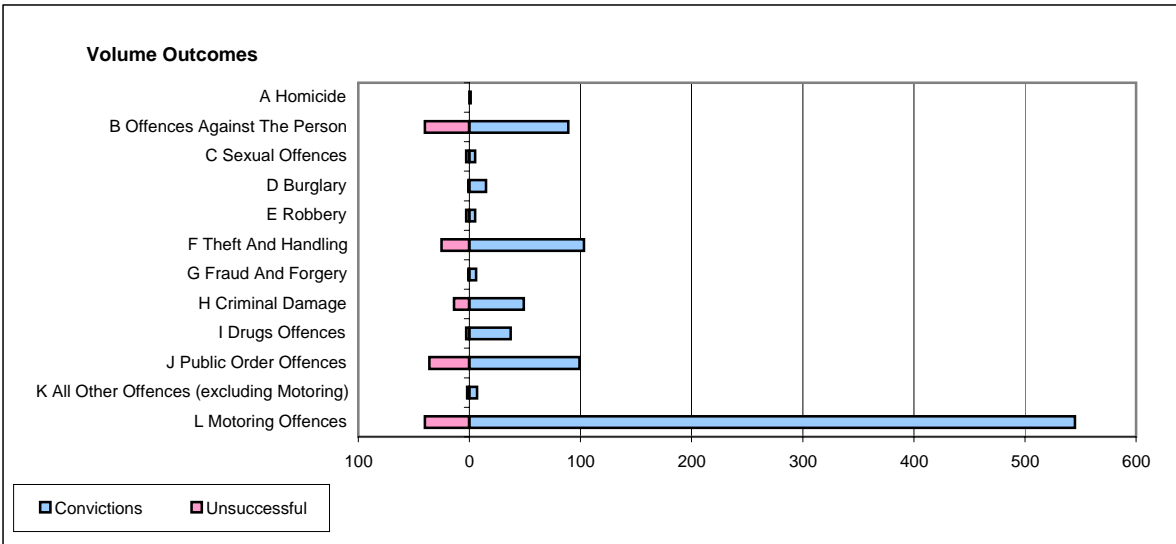
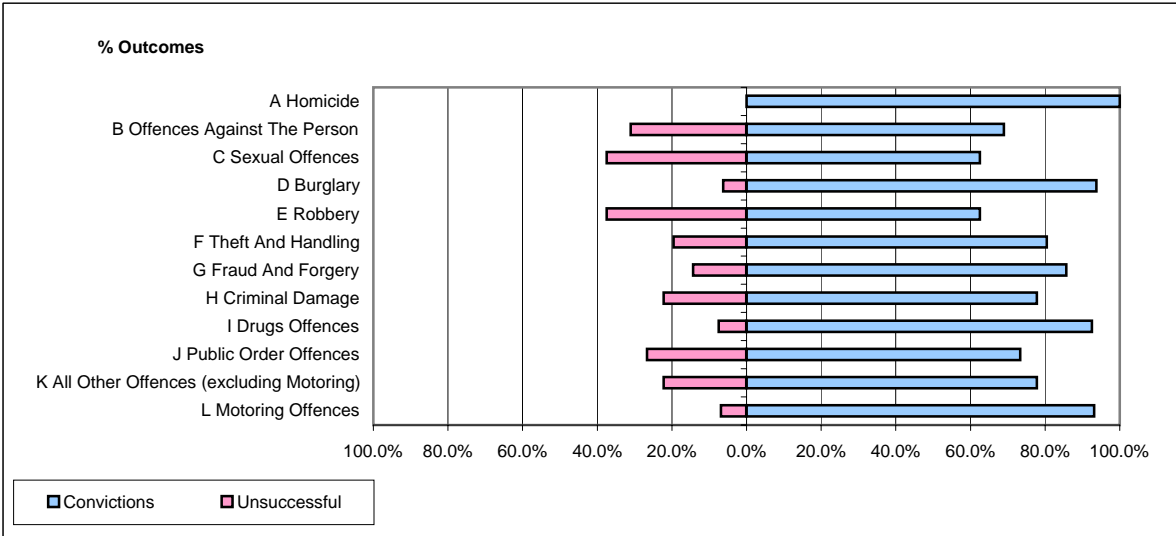


CPS OUTCOMES BY PRINCIPAL OFFENCE CATEGORY

May 2006

P16-Gwent



	Convictions		Unsuccessful	
	Number of Defendants	%	Number of Defendants	%
A Homicide	1	100.0%	0	0.0%
B Offences Against The Person	89	69.0%	40	31.0%
C Sexual Offences	5	62.5%	3	37.5%
D Burglary	15	93.8%	1	6.3%
E Robbery	5	62.5%	3	37.5%
F Theft And Handling	103	80.5%	25	19.5%
G Fraud And Forgery	6	85.7%	1	14.3%
H Criminal Damage	49	77.8%	14	22.2%
I Drugs Offences	37	92.5%	3	7.5%
J Public Order Offences	99	73.3%	36	26.7%
K All Other Offences (excluding Motoring)	7	77.8%	2	22.2%
L Motoring Offences	545	93.2%	40	6.8%
Admin Finalisations	0	0.0%	19	100.0%
TOTAL	961	83.7%	187	16.3%