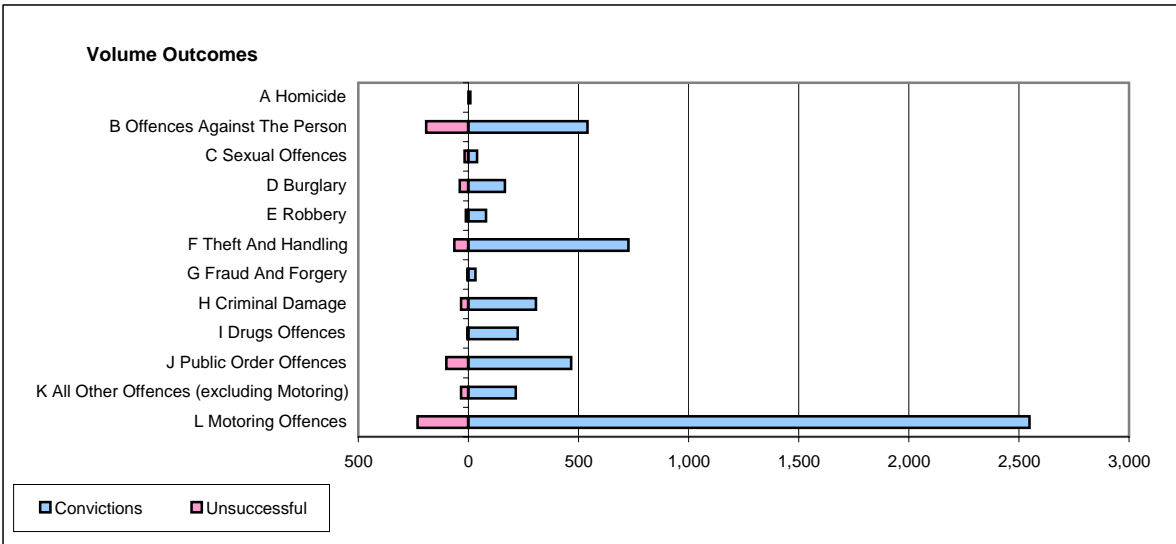
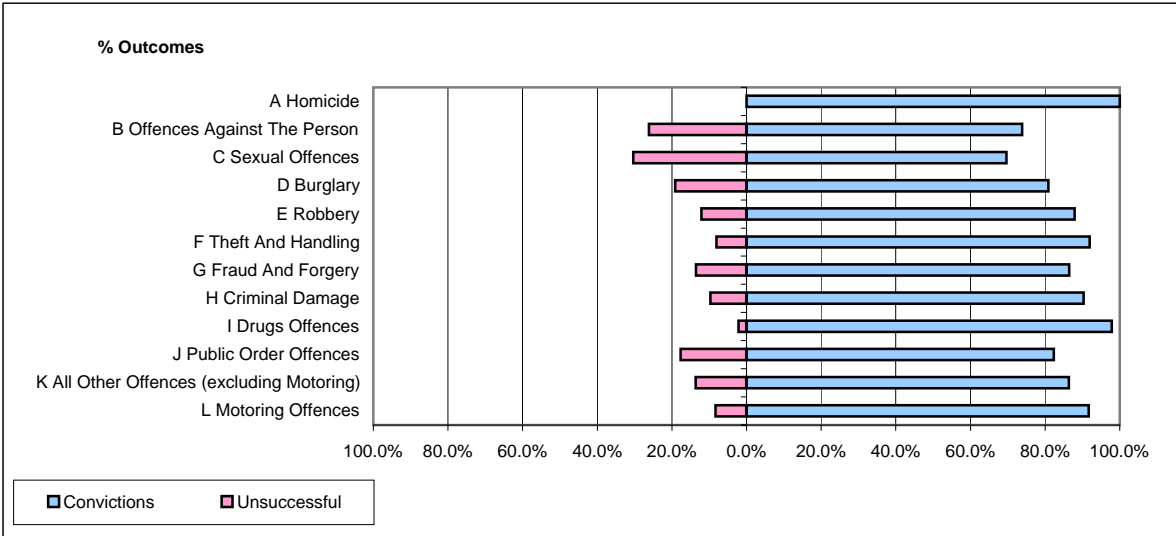


CPS OUTCOMES BY PRINCIPAL OFFENCE CATEGORY

May 2006

P15-GreaterManchester



	Convictions		Unsuccessful	
	Number of Defendants	%	Number of Defendants	%
A Homicide	8	100.0%	0	0.0%
B Offences Against The Person	541	73.8%	192	26.2%
C Sexual Offences	39	69.6%	17	30.4%
D Burglary	165	80.9%	39	19.1%
E Robbery	80	87.9%	11	12.1%
F Theft And Handling	727	91.9%	64	8.1%
G Fraud And Forgery	32	86.5%	5	13.5%
H Criminal Damage	307	90.3%	33	9.7%
I Drugs Offences	224	97.8%	5	2.2%
J Public Order Offences	466	82.3%	100	17.7%
K All Other Offences (excluding Motoring)	215	86.3%	34	13.7%
L Motoring Offences	2,548	91.7%	231	8.3%
Admin Finalisations	0	0.0%	205	100.0%
TOTAL	5,352	85.1%	936	14.9%