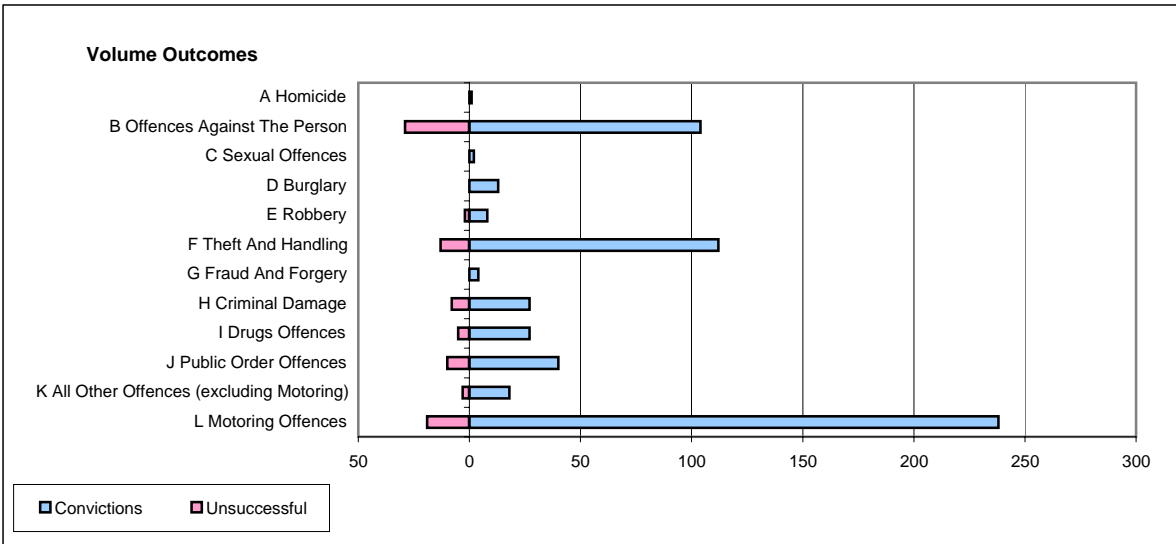
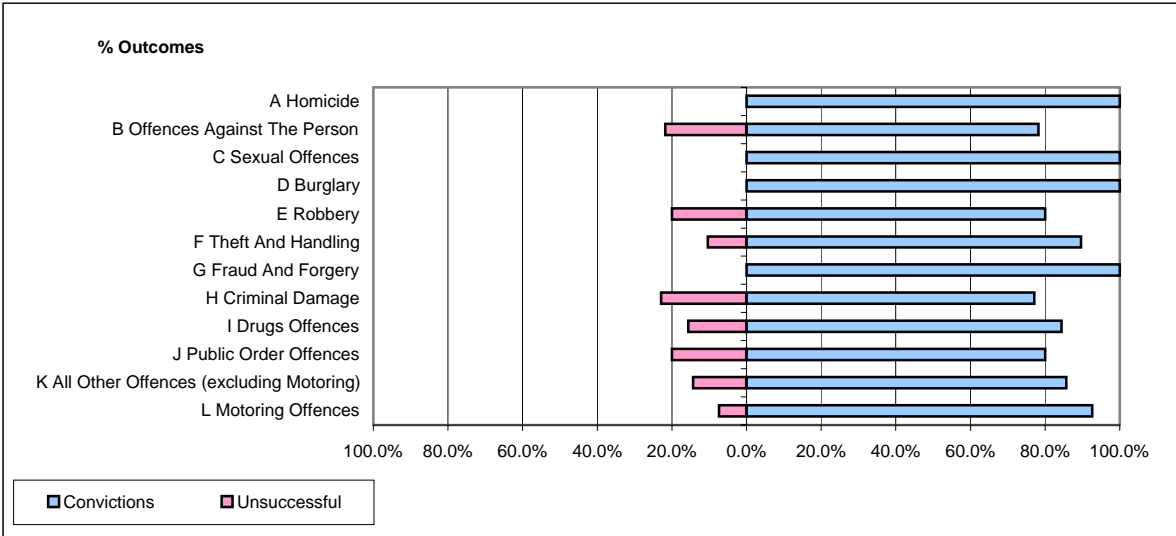


CPS OUTCOMES BY PRINCIPAL OFFENCE CATEGORY

May 2006

P14-Gloucestershire



	Convictions		Unsuccessful	
	Number of Defendants	%	Number of Defendants	%
A Homicide	1	100.0%	0	0.0%
B Offences Against The Person	104	78.2%	29	21.8%
C Sexual Offences	2	100.0%	0	0.0%
D Burglary	13	100.0%	0	0.0%
E Robbery	8	80.0%	2	20.0%
F Theft And Handling	112	89.6%	13	10.4%
G Fraud And Forgery	4	100.0%	0	0.0%
H Criminal Damage	27	77.1%	8	22.9%
I Drugs Offences	27	84.4%	5	15.6%
J Public Order Offences	40	80.0%	10	20.0%
K All Other Offences (excluding Motoring)	18	85.7%	3	14.3%
L Motoring Offences	238	92.6%	19	7.4%
Admin Finalisations	0	0.0%	23	100.0%
TOTAL	594	84.1%	112	15.9%