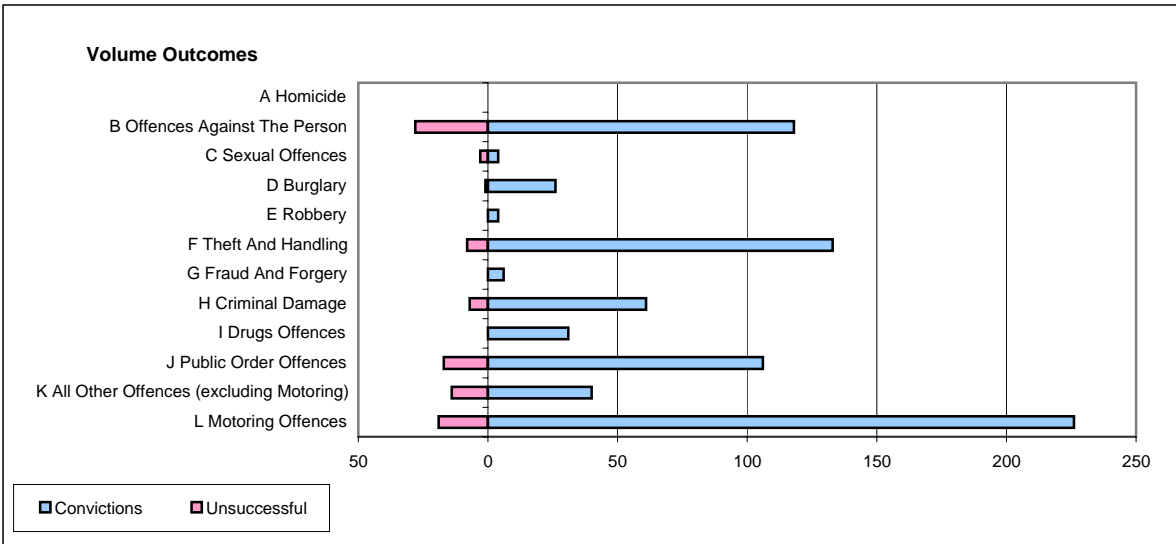
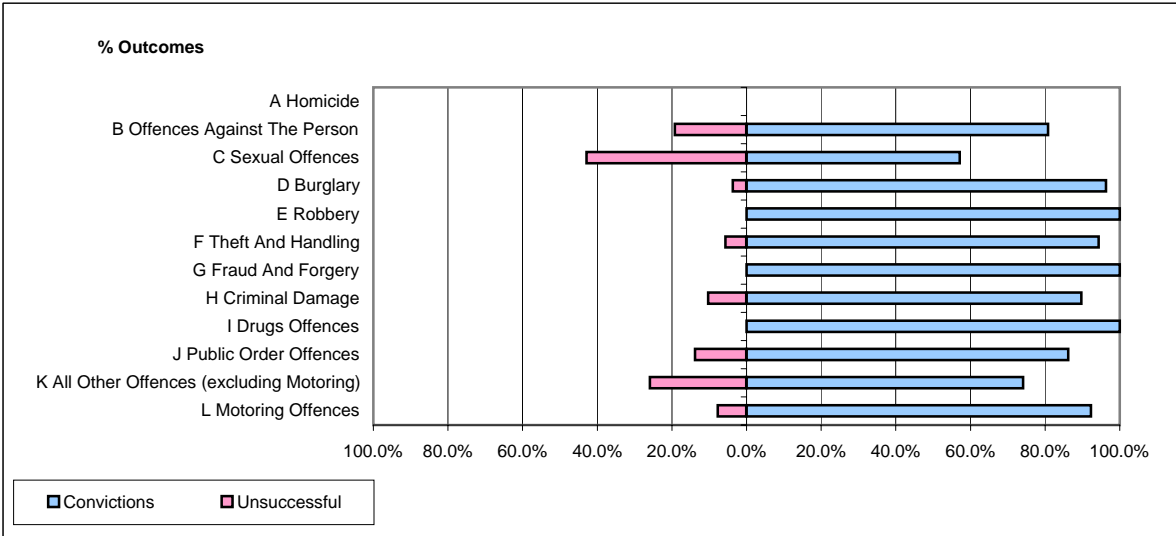


CPS OUTCOMES BY PRINCIPAL OFFENCE CATEGORY

May 2006

P11-Durham



	Convictions		Unsuccessful	
	Number of Defendants	%	Number of Defendants	%
A Homicide	0	#DIV/0!	0	#DIV/0!
B Offences Against The Person	118	80.8%	28	19.2%
C Sexual Offences	4	57.1%	3	42.9%
D Burglary	26	96.3%	1	3.7%
E Robbery	4	100.0%	0	0.0%
F Theft And Handling	133	94.3%	8	5.7%
G Fraud And Forgery	6	100.0%	0	0.0%
H Criminal Damage	61	89.7%	7	10.3%
I Drugs Offences	31	100.0%	0	0.0%
J Public Order Offences	106	86.2%	17	13.8%
K All Other Offences (excluding Motoring)	40	74.1%	14	25.9%
L Motoring Offences	226	92.2%	19	7.8%
Admin Finalisations	0	0.0%	20	100.0%
TOTAL	755	86.6%	117	13.4%