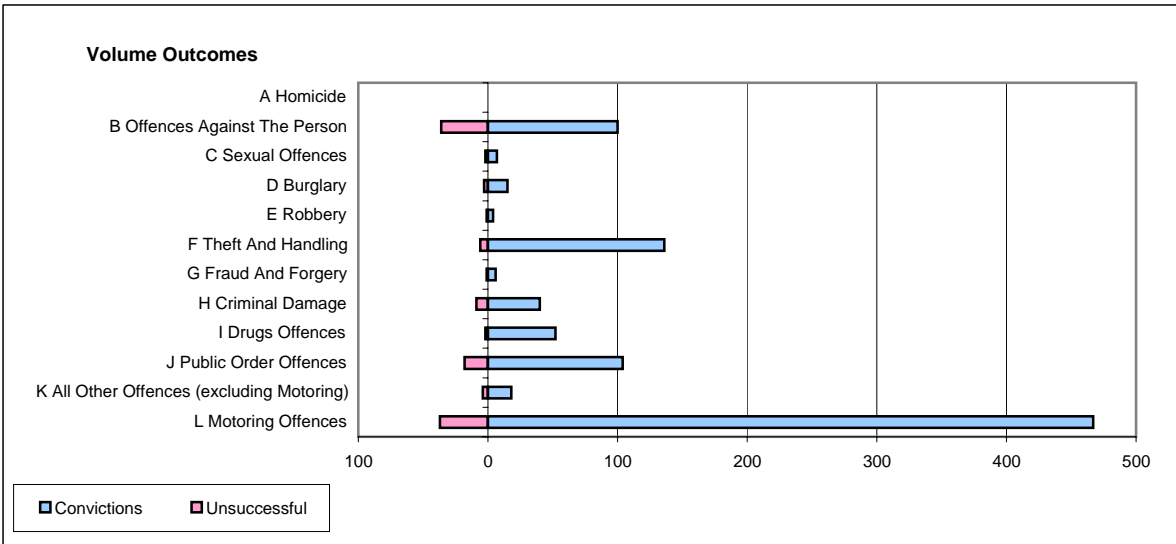
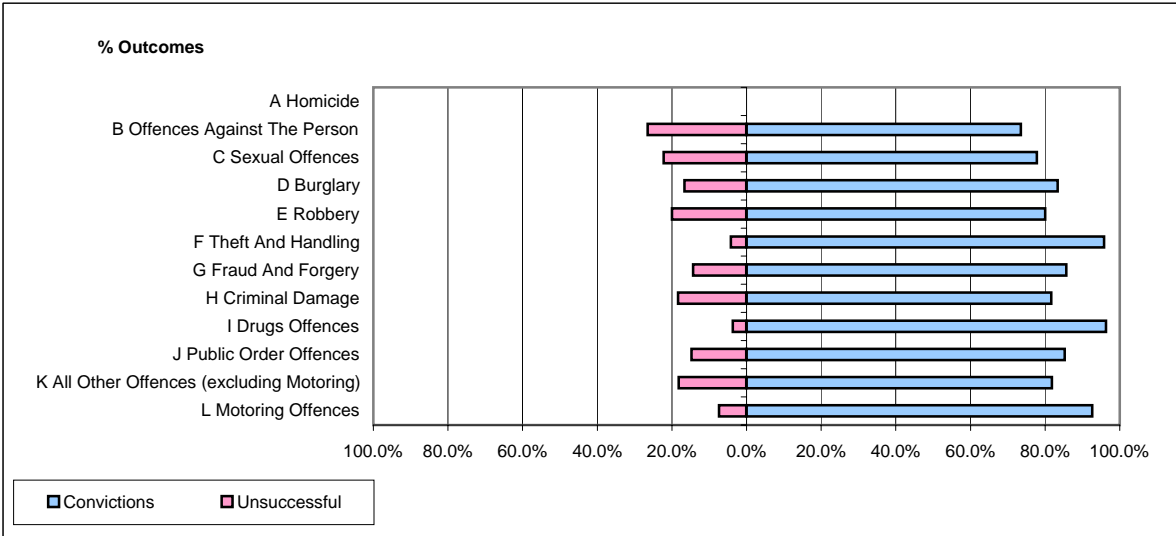


CPS OUTCOMES BY PRINCIPAL OFFENCE CATEGORY

May 2006

P10-Dorset



| | Convictions | | Unsuccessful | |
|--|----------------------|----------------|----------------------|----------------|
| | Number of Defendants | % | Number of Defendants | % |
| A Homicide | 0 | #DIV/0! | 0 | #DIV/0! |
| B Offences Against The Person | 100 | 73.5% | 36 | 26.5% |
| C Sexual Offences | 7 | 77.8% | 2 | 22.2% |
| D Burglary | 15 | 83.3% | 3 | 16.7% |
| E Robbery | 4 | 80.0% | 1 | 20.0% |
| F Theft And Handling | 136 | 95.8% | 6 | 4.2% |
| G Fraud And Forgery | 6 | 85.7% | 1 | 14.3% |
| H Criminal Damage | 40 | 81.6% | 9 | 18.4% |
| I Drugs Offences | 52 | 96.3% | 2 | 3.7% |
| J Public Order Offences | 104 | 85.2% | 18 | 14.8% |
| K All Other Offences (excluding Motoring) | 18 | 81.8% | 4 | 18.2% |
| L Motoring Offences | 467 | 92.7% | 37 | 7.3% |
| Admin Finalisations | 0 | 0.0% | 12 | 100.0% |
| TOTAL | 949 | 87.9% | 131 | 12.1% |