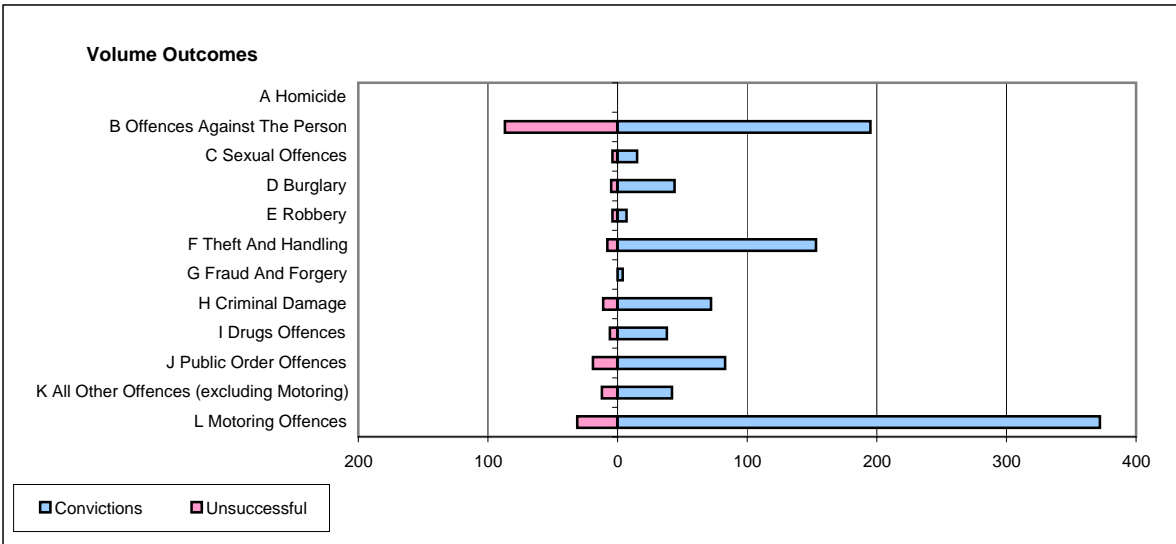
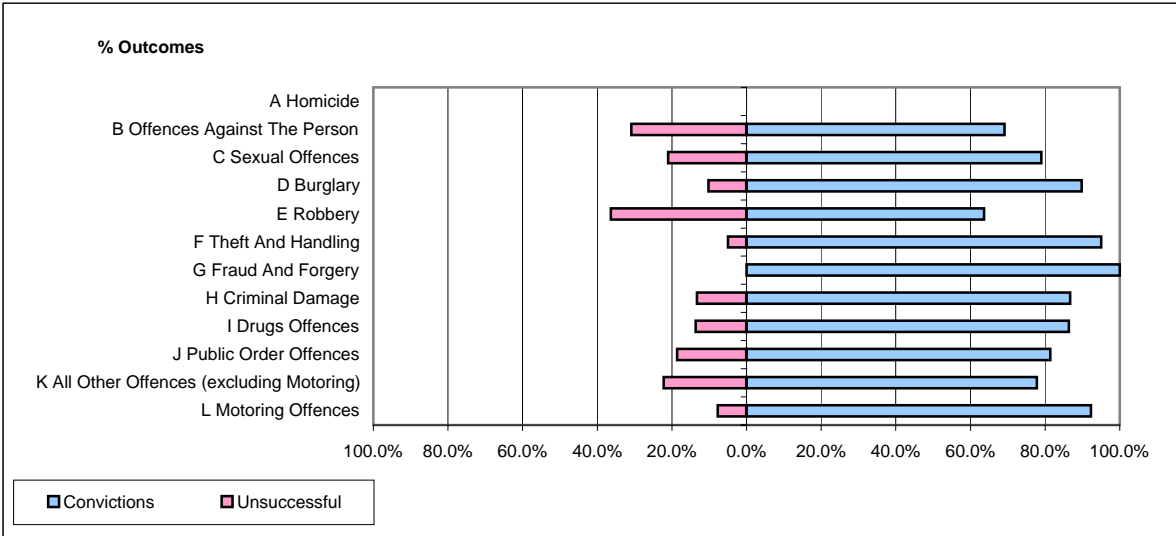


CPS OUTCOMES BY PRINCIPAL OFFENCE CATEGORY

May 2006

P08-Derbyshire



	Convictions		Unsuccessful	
	Number of Defendants	%	Number of Defendants	%
A Homicide	0	#DIV/0!	0	#DIV/0!
B Offences Against The Person	195	69.1%	87	30.9%
C Sexual Offences	15	78.9%	4	21.1%
D Burglary	44	89.8%	5	10.2%
E Robbery	7	63.6%	4	36.4%
F Theft And Handling	153	95.0%	8	5.0%
G Fraud And Forgery	4	100.0%	0	0.0%
H Criminal Damage	72	86.7%	11	13.3%
I Drugs Offences	38	86.4%	6	13.6%
J Public Order Offences	83	81.4%	19	18.6%
K All Other Offences (excluding Motoring)	42	77.8%	12	22.2%
L Motoring Offences	372	92.3%	31	7.7%
Admin Finalisations	0	0.0%	16	100.0%
TOTAL	1,025	83.5%	203	16.5%