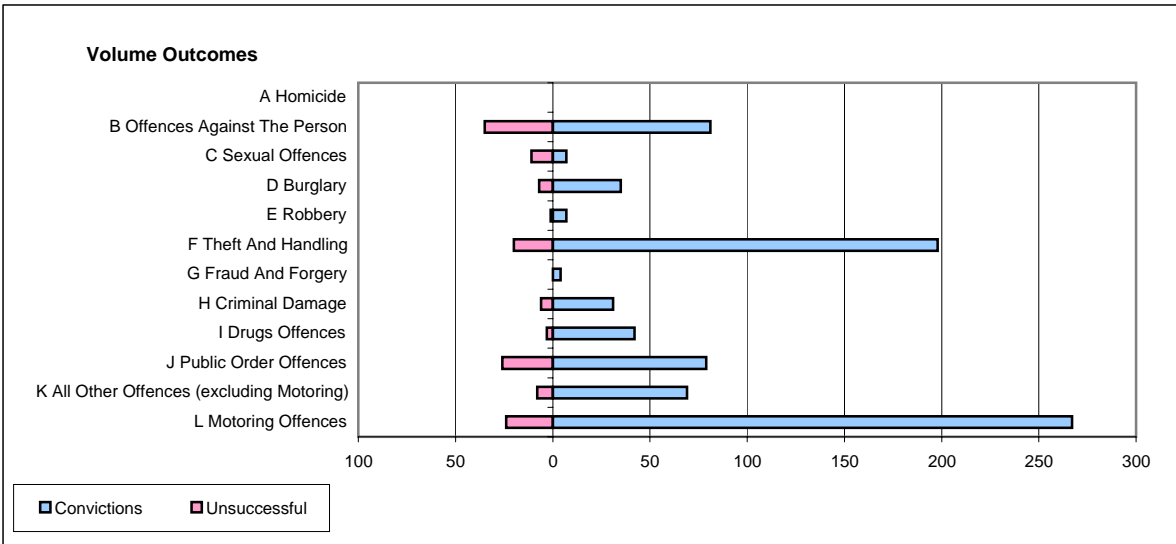
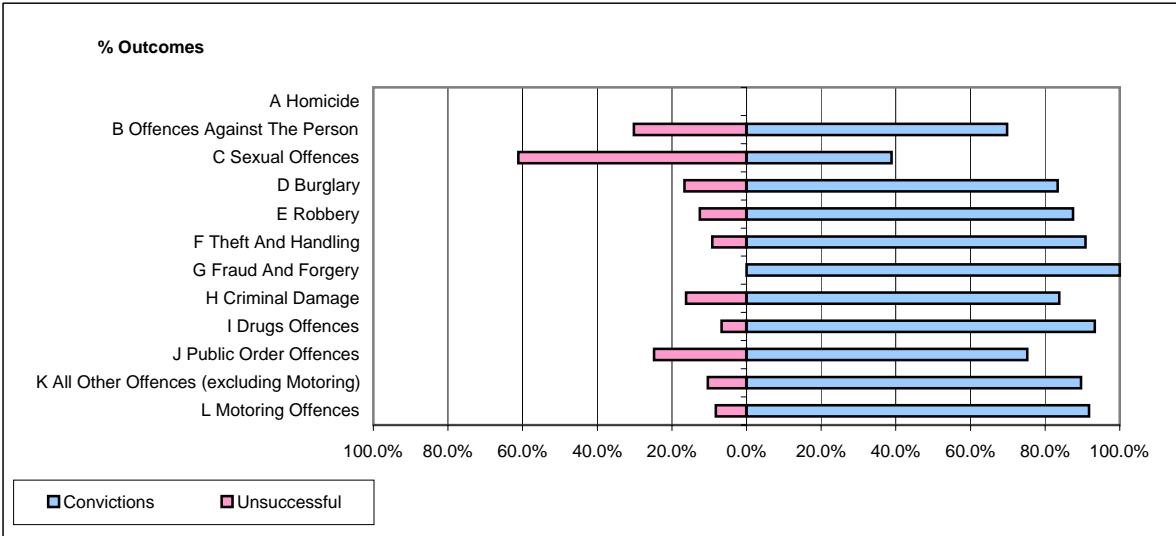


**CPS OUTCOMES BY PRINCIPAL OFFENCE CATEGORY**

**May 2006**

**P06-Cleveland**



	Convictions		Unsuccessful	
	Number of Defendants	%	Number of Defendants	%
<b>A Homicide</b>	<b>0</b>	<b>#DIV/0!</b>	<b>0</b>	<b>#DIV/0!</b>
<b>B Offences Against The Person</b>	<b>81</b>	<b>69.8%</b>	<b>35</b>	<b>30.2%</b>
<b>C Sexual Offences</b>	<b>7</b>	<b>38.9%</b>	<b>11</b>	<b>61.1%</b>
<b>D Burglary</b>	<b>35</b>	<b>83.3%</b>	<b>7</b>	<b>16.7%</b>
<b>E Robbery</b>	<b>7</b>	<b>87.5%</b>	<b>1</b>	<b>12.5%</b>
<b>F Theft And Handling</b>	<b>198</b>	<b>90.8%</b>	<b>20</b>	<b>9.2%</b>
<b>G Fraud And Forgery</b>	<b>4</b>	<b>100.0%</b>	<b>0</b>	<b>0.0%</b>
<b>H Criminal Damage</b>	<b>31</b>	<b>83.8%</b>	<b>6</b>	<b>16.2%</b>
<b>I Drugs Offences</b>	<b>42</b>	<b>93.3%</b>	<b>3</b>	<b>6.7%</b>
<b>J Public Order Offences</b>	<b>79</b>	<b>75.2%</b>	<b>26</b>	<b>24.8%</b>
<b>K All Other Offences (excluding Motoring)</b>	<b>69</b>	<b>89.6%</b>	<b>8</b>	<b>10.4%</b>
<b>L Motoring Offences</b>	<b>267</b>	<b>91.8%</b>	<b>24</b>	<b>8.2%</b>
<b>Admin Finalisations</b>	<b>0</b>	<b>0.0%</b>	<b>7</b>	<b>100.0%</b>
<b>TOTAL</b>	<b>820</b>	<b>84.7%</b>	<b>148</b>	<b>15.3%</b>