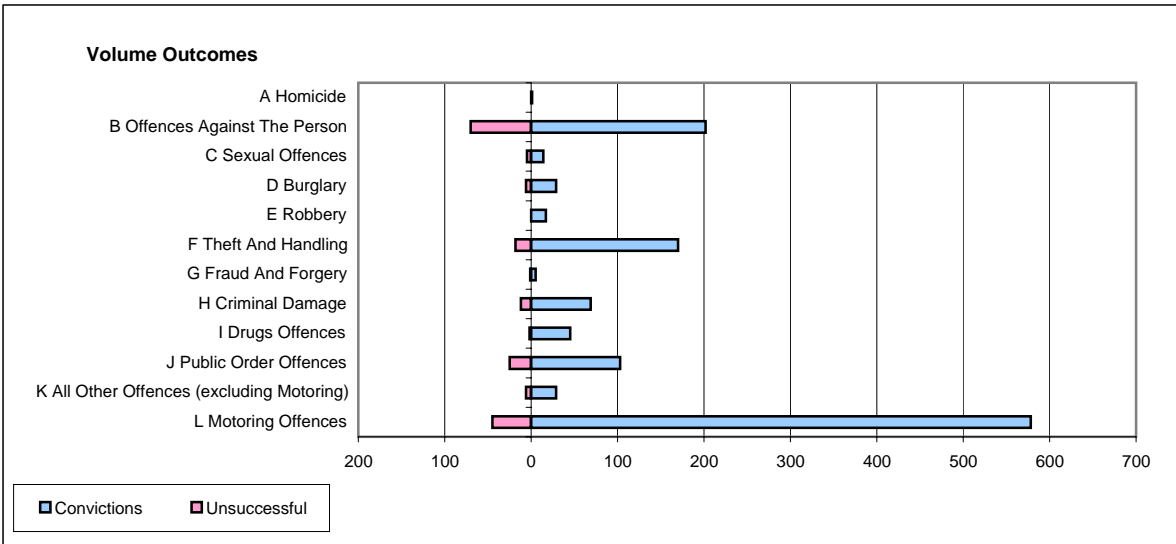
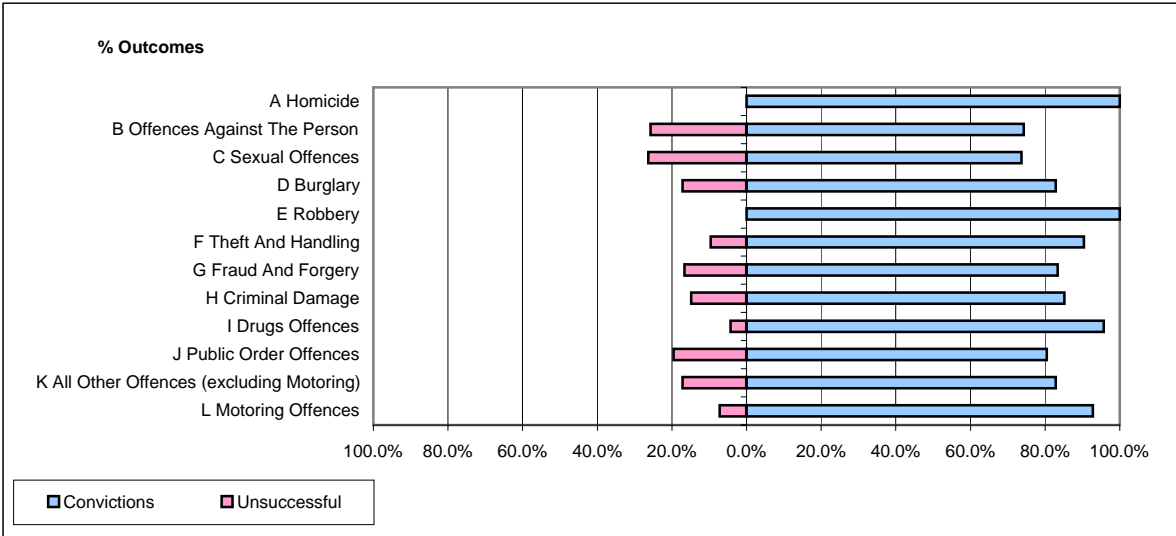


**CPS OUTCOMES BY PRINCIPAL OFFENCE CATEGORY**

**May 2006**

**P04-Cheshire**



	Convictions		Unsuccessful	
	Number of Defendants	%	Number of Defendants	%
<b>A Homicide</b>	<b>1</b>	<b>100.0%</b>	<b>0</b>	<b>0.0%</b>
<b>B Offences Against The Person</b>	<b>202</b>	<b>74.3%</b>	<b>70</b>	<b>25.7%</b>
<b>C Sexual Offences</b>	<b>14</b>	<b>73.7%</b>	<b>5</b>	<b>26.3%</b>
<b>D Burglary</b>	<b>29</b>	<b>82.9%</b>	<b>6</b>	<b>17.1%</b>
<b>E Robbery</b>	<b>17</b>	<b>100.0%</b>	<b>0</b>	<b>0.0%</b>
<b>F Theft And Handling</b>	<b>170</b>	<b>90.4%</b>	<b>18</b>	<b>9.6%</b>
<b>G Fraud And Forgery</b>	<b>5</b>	<b>83.3%</b>	<b>1</b>	<b>16.7%</b>
<b>H Criminal Damage</b>	<b>69</b>	<b>85.2%</b>	<b>12</b>	<b>14.8%</b>
<b>I Drugs Offences</b>	<b>45</b>	<b>95.7%</b>	<b>2</b>	<b>4.3%</b>
<b>J Public Order Offences</b>	<b>103</b>	<b>80.5%</b>	<b>25</b>	<b>19.5%</b>
<b>K All Other Offences (excluding Motoring)</b>	<b>29</b>	<b>82.9%</b>	<b>6</b>	<b>17.1%</b>
<b>L Motoring Offences</b>	<b>578</b>	<b>92.8%</b>	<b>45</b>	<b>7.2%</b>
<b>Admin Finalisations</b>	<b>0</b>	<b>0.0%</b>	<b>18</b>	<b>100.0%</b>
<b>TOTAL</b>	<b>1,262</b>	<b>85.9%</b>	<b>208</b>	<b>14.1%</b>