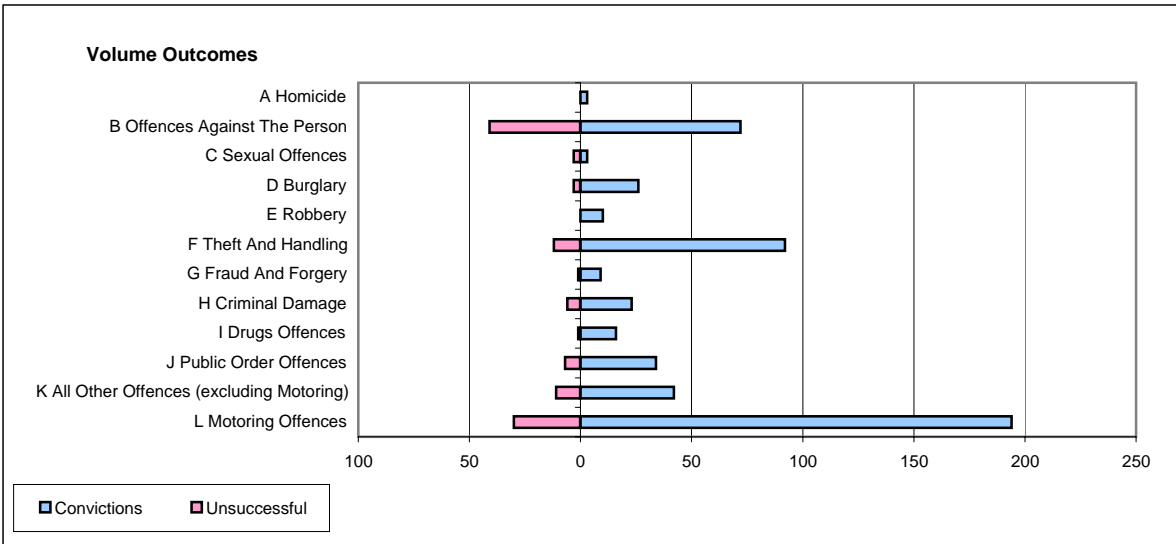
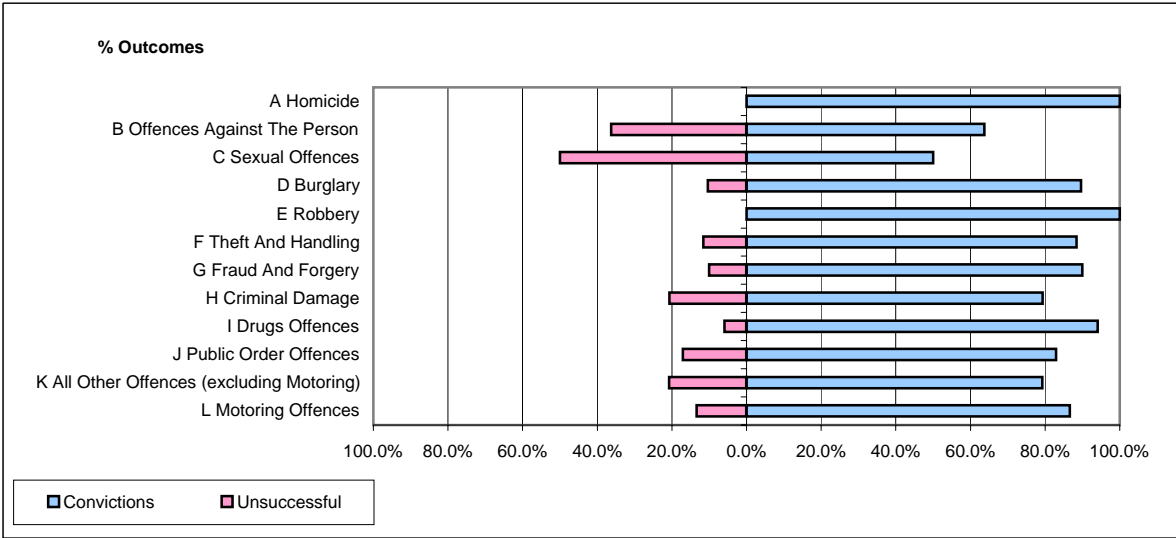


CPS OUTCOMES BY PRINCIPAL OFFENCE CATEGORY

May 2006

P02-Bedfordshire



	Convictions		Unsuccessful	
	Number of Defendants	%	Number of Defendants	%
A Homicide	3	100.0%	0	0.0%
B Offences Against The Person	72	63.7%	41	36.3%
C Sexual Offences	3	50.0%	3	50.0%
D Burglary	26	89.7%	3	10.3%
E Robbery	10	100.0%	0	0.0%
F Theft And Handling	92	88.5%	12	11.5%
G Fraud And Forgery	9	90.0%	1	10.0%
H Criminal Damage	23	79.3%	6	20.7%
I Drugs Offences	16	94.1%	1	5.9%
J Public Order Offences	34	82.9%	7	17.1%
K All Other Offences (excluding Motoring)	42	79.2%	11	20.8%
L Motoring Offences	194	86.6%	30	13.4%
Admin Finalisations	0	0.0%	13	100.0%
TOTAL	524	80.4%	128	19.6%