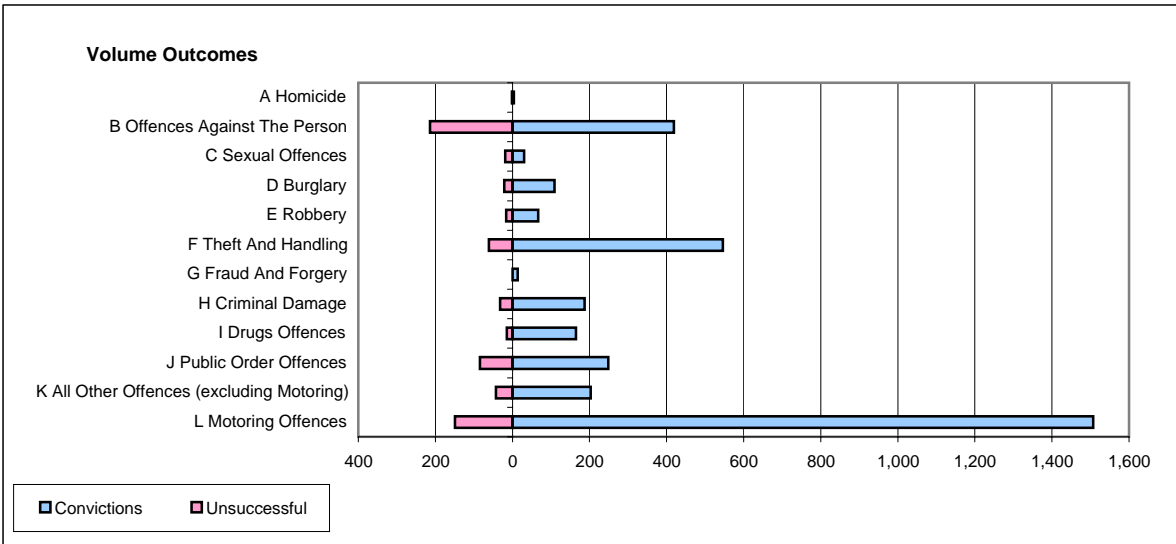
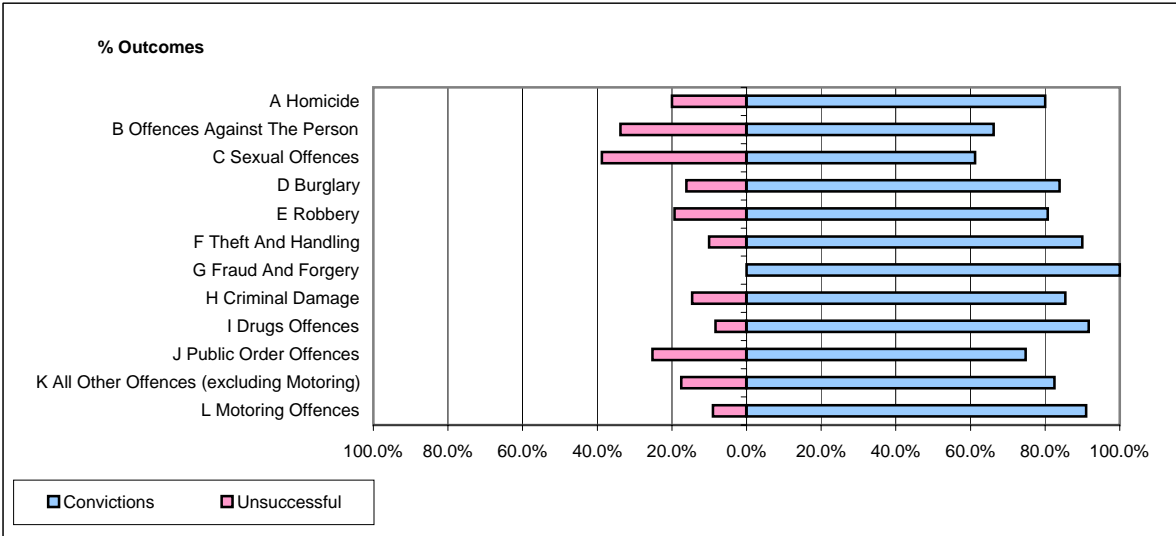


**CPS OUTCOMES BY PRINCIPAL OFFENCE CATEGORY**

**April 2006**

**P41-WestMidlands**



	Convictions		Unsuccessful	
	Number of Defendants	%	Number of Defendants	%
<b>A Homicide</b>	<b>4</b>	<b>80.0%</b>	<b>1</b>	<b>20.0%</b>
<b>B Offences Against The Person</b>	<b>419</b>	<b>66.2%</b>	<b>214</b>	<b>33.8%</b>
<b>C Sexual Offences</b>	<b>30</b>	<b>61.2%</b>	<b>19</b>	<b>38.8%</b>
<b>D Burglary</b>	<b>109</b>	<b>83.8%</b>	<b>21</b>	<b>16.2%</b>
<b>E Robbery</b>	<b>67</b>	<b>80.7%</b>	<b>16</b>	<b>19.3%</b>
<b>F Theft And Handling</b>	<b>546</b>	<b>90.0%</b>	<b>61</b>	<b>10.0%</b>
<b>G Fraud And Forgery</b>	<b>14</b>	<b>100.0%</b>	<b>0</b>	<b>0.0%</b>
<b>H Criminal Damage</b>	<b>187</b>	<b>85.4%</b>	<b>32</b>	<b>14.6%</b>
<b>I Drugs Offences</b>	<b>165</b>	<b>91.7%</b>	<b>15</b>	<b>8.3%</b>
<b>J Public Order Offences</b>	<b>249</b>	<b>74.8%</b>	<b>84</b>	<b>25.2%</b>
<b>K All Other Offences (excluding Motoring)</b>	<b>203</b>	<b>82.5%</b>	<b>43</b>	<b>17.5%</b>
<b>L Motoring Offences</b>	<b>1,507</b>	<b>91.0%</b>	<b>149</b>	<b>9.0%</b>
<b>Admin Finalisations</b>	<b>0</b>	<b>0.0%</b>	<b>111</b>	<b>100.0%</b>
<b>TOTAL</b>	<b>3,500</b>	<b>82.0%</b>	<b>766</b>	<b>18.0%</b>