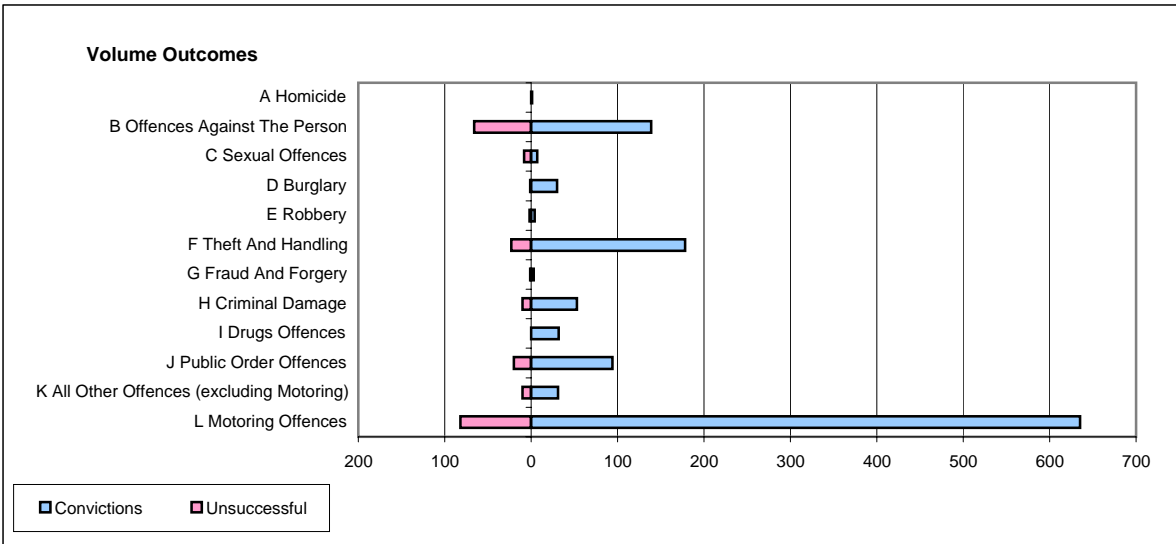
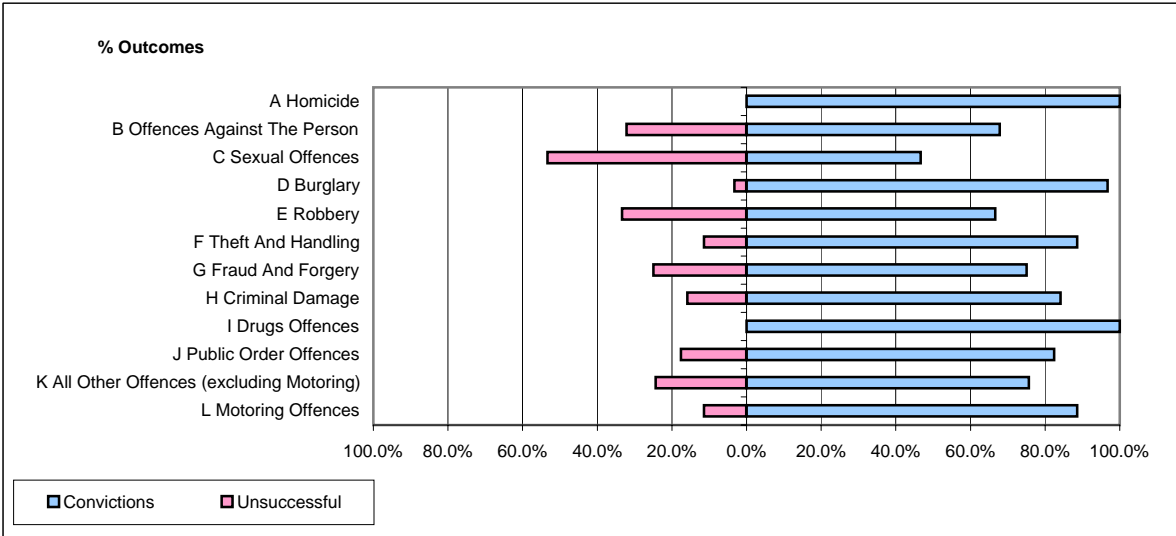


CPS OUTCOMES BY PRINCIPAL OFFENCE CATEGORY

April 2006

P40-WestMercia



| | Convictions | | Unsuccessful | |
|--|----------------------|---------------|----------------------|---------------|
| | Number of Defendants | % | Number of Defendants | % |
| A Homicide | 1 | 100.0% | 0 | 0.0% |
| B Offences Against The Person | 139 | 67.8% | 66 | 32.2% |
| C Sexual Offences | 7 | 46.7% | 8 | 53.3% |
| D Burglary | 30 | 96.8% | 1 | 3.2% |
| E Robbery | 4 | 66.7% | 2 | 33.3% |
| F Theft And Handling | 178 | 88.6% | 23 | 11.4% |
| G Fraud And Forgery | 3 | 75.0% | 1 | 25.0% |
| H Criminal Damage | 53 | 84.1% | 10 | 15.9% |
| I Drugs Offences | 32 | 100.0% | 0 | 0.0% |
| J Public Order Offences | 94 | 82.5% | 20 | 17.5% |
| K All Other Offences (excluding Motoring) | 31 | 75.6% | 10 | 24.4% |
| L Motoring Offences | 635 | 88.6% | 82 | 11.4% |
| Admin Finalisations | 0 | 0.0% | 33 | 100.0% |
| TOTAL | 1,207 | 82.5% | 256 | 17.5% |