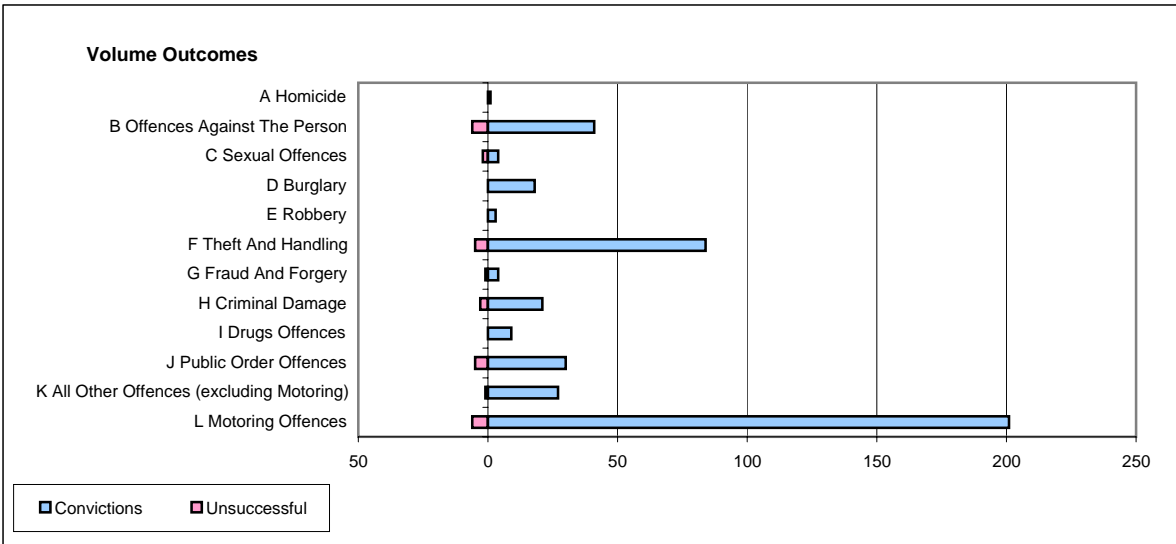
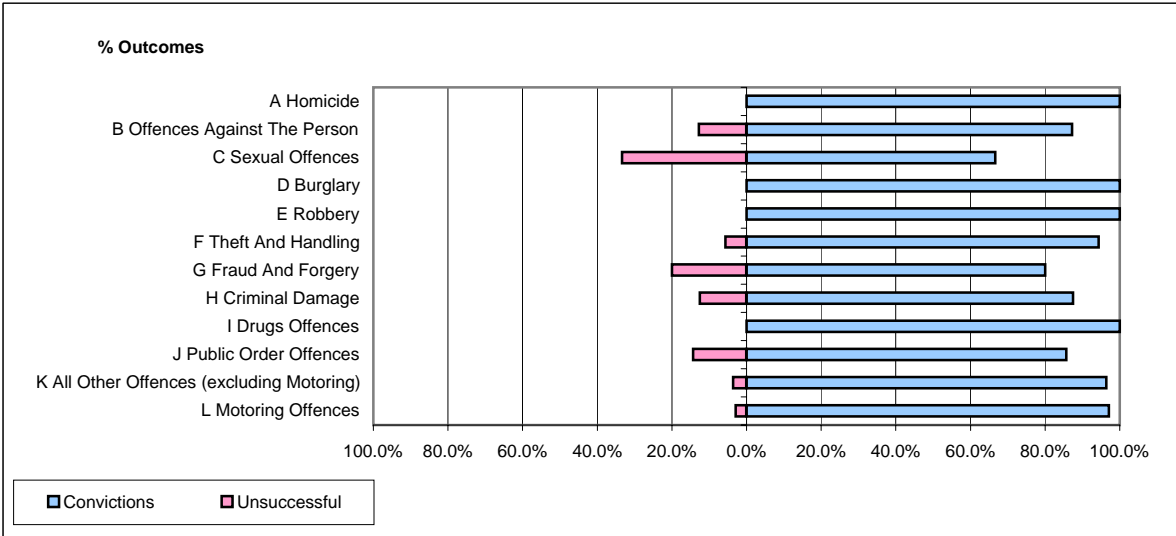


**CPS OUTCOMES BY PRINCIPAL OFFENCE CATEGORY**

**April 2006**

**P39-Warwickshire**



	Convictions		Unsuccessful	
	Number of Defendants	%	Number of Defendants	%
<b>A Homicide</b>	1	100.0%	0	0.0%
<b>B Offences Against The Person</b>	41	87.2%	6	12.8%
<b>C Sexual Offences</b>	4	66.7%	2	33.3%
<b>D Burglary</b>	18	100.0%	0	0.0%
<b>E Robbery</b>	3	100.0%	0	0.0%
<b>F Theft And Handling</b>	84	94.4%	5	5.6%
<b>G Fraud And Forgery</b>	4	80.0%	1	20.0%
<b>H Criminal Damage</b>	21	87.5%	3	12.5%
<b>I Drugs Offences</b>	9	100.0%	0	0.0%
<b>J Public Order Offences</b>	30	85.7%	5	14.3%
<b>K All Other Offences (excluding Motoring)</b>	27	96.4%	1	3.6%
<b>L Motoring Offences</b>	201	97.1%	6	2.9%
<b>Admin Finalisations</b>	0	0.0%	4	100.0%
<b>TOTAL</b>	<b>443</b>	<b>93.1%</b>	<b>33</b>	<b>6.9%</b>