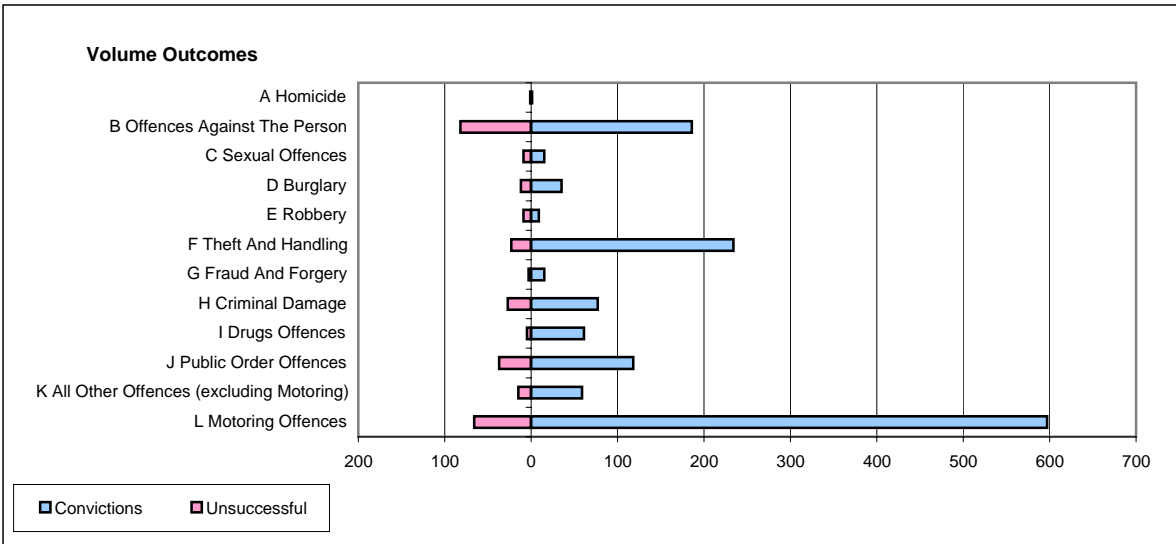
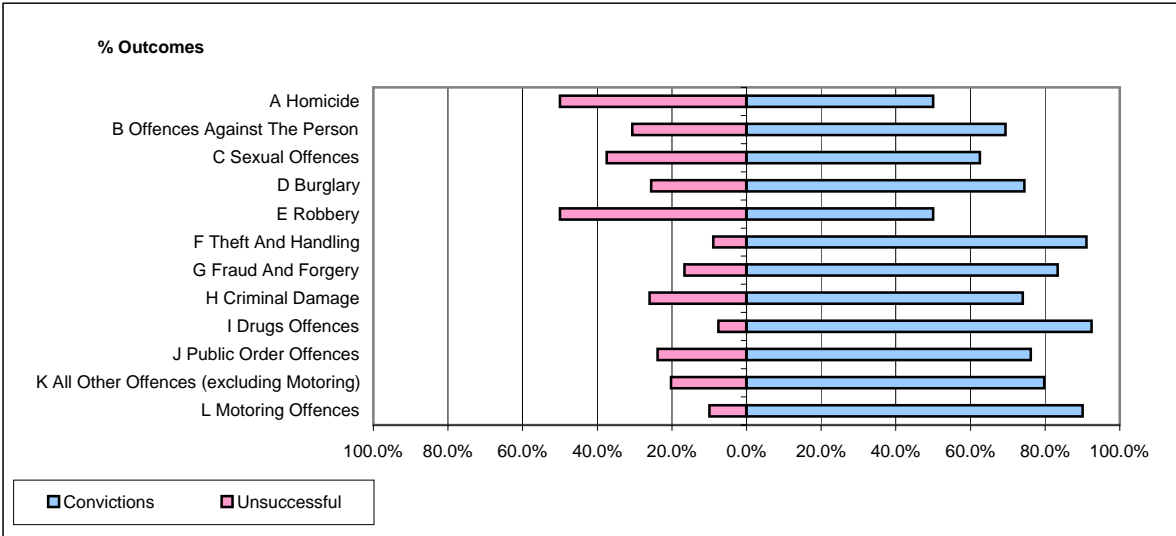


CPS OUTCOMES BY PRINCIPAL OFFENCE CATEGORY

April 2006

P37-Sussex



	Convictions		Unsuccessful	
	Number of Defendants	%	Number of Defendants	%
A Homicide	1	50.0%	1	50.0%
B Offences Against The Person	186	69.4%	82	30.6%
C Sexual Offences	15	62.5%	9	37.5%
D Burglary	35	74.5%	12	25.5%
E Robbery	9	50.0%	9	50.0%
F Theft And Handling	234	91.1%	23	8.9%
G Fraud And Forgery	15	83.3%	3	16.7%
H Criminal Damage	77	74.0%	27	26.0%
I Drugs Offences	61	92.4%	5	7.6%
J Public Order Offences	118	76.1%	37	23.9%
K All Other Offences (excluding Motoring)	59	79.7%	15	20.3%
L Motoring Offences	597	90.0%	66	10.0%
Admin Finalisations	0	0.0%	34	100.0%
TOTAL	1,407	81.3%	323	18.7%