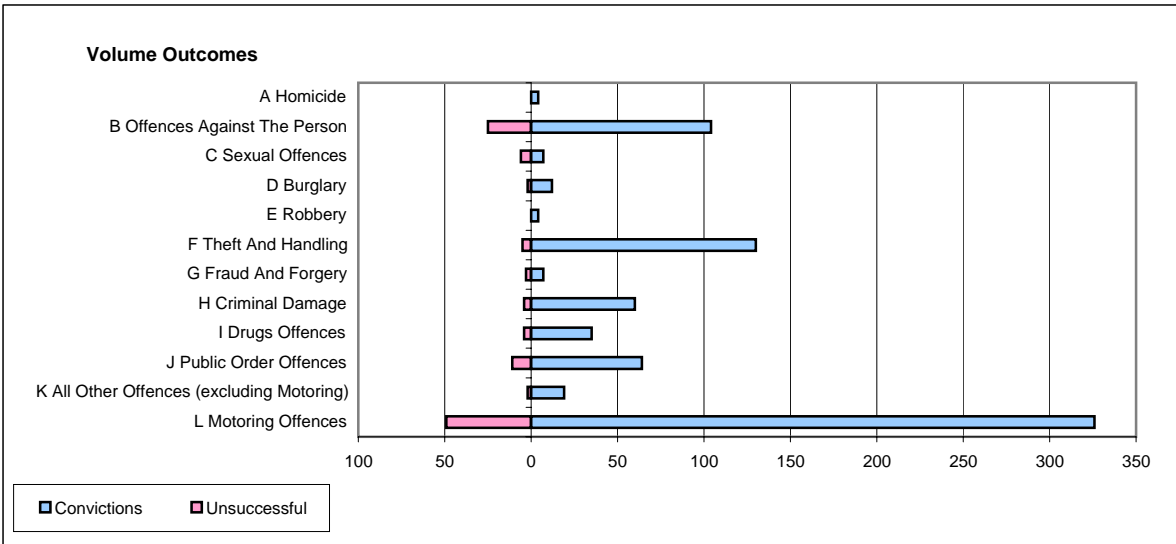
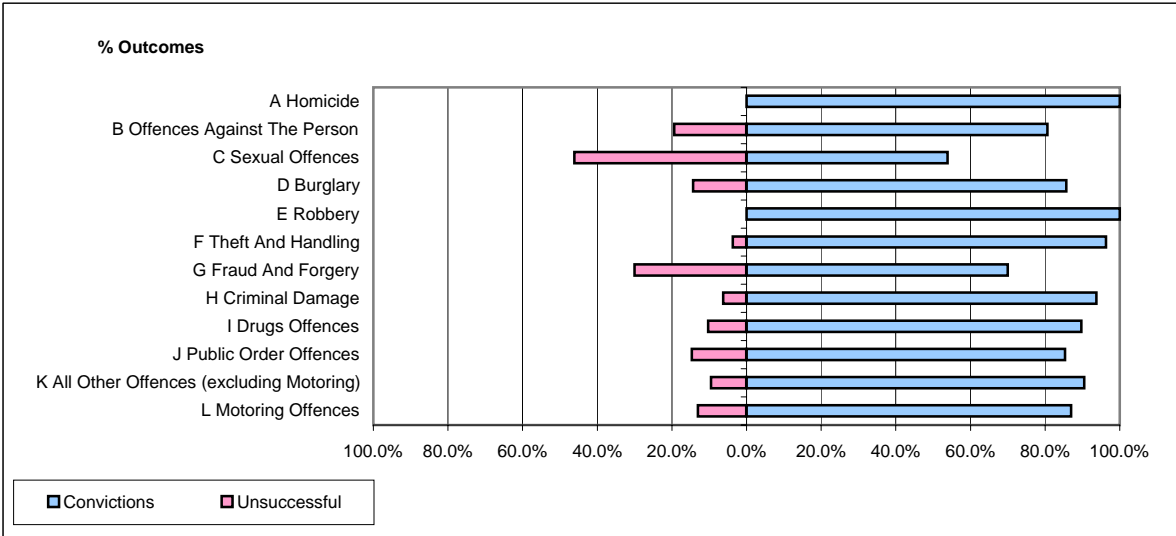


CPS OUTCOMES BY PRINCIPAL OFFENCE CATEGORY

April 2006

P35-Suffolk



| | Convictions | | Unsuccessful | |
|--|----------------------|---------------|----------------------|---------------|
| | Number of Defendants | % | Number of Defendants | % |
| A Homicide | 4 | 100.0% | 0 | 0.0% |
| B Offences Against The Person | 104 | 80.6% | 25 | 19.4% |
| C Sexual Offences | 7 | 53.8% | 6 | 46.2% |
| D Burglary | 12 | 85.7% | 2 | 14.3% |
| E Robbery | 4 | 100.0% | 0 | 0.0% |
| F Theft And Handling | 130 | 96.3% | 5 | 3.7% |
| G Fraud And Forgery | 7 | 70.0% | 3 | 30.0% |
| H Criminal Damage | 60 | 93.8% | 4 | 6.3% |
| I Drugs Offences | 35 | 89.7% | 4 | 10.3% |
| J Public Order Offences | 64 | 85.3% | 11 | 14.7% |
| K All Other Offences (excluding Motoring) | 19 | 90.5% | 2 | 9.5% |
| L Motoring Offences | 326 | 86.9% | 49 | 13.1% |
| Admin Finalisations | 0 | 0.0% | 29 | 100.0% |
| TOTAL | 772 | 84.6% | 140 | 15.4% |