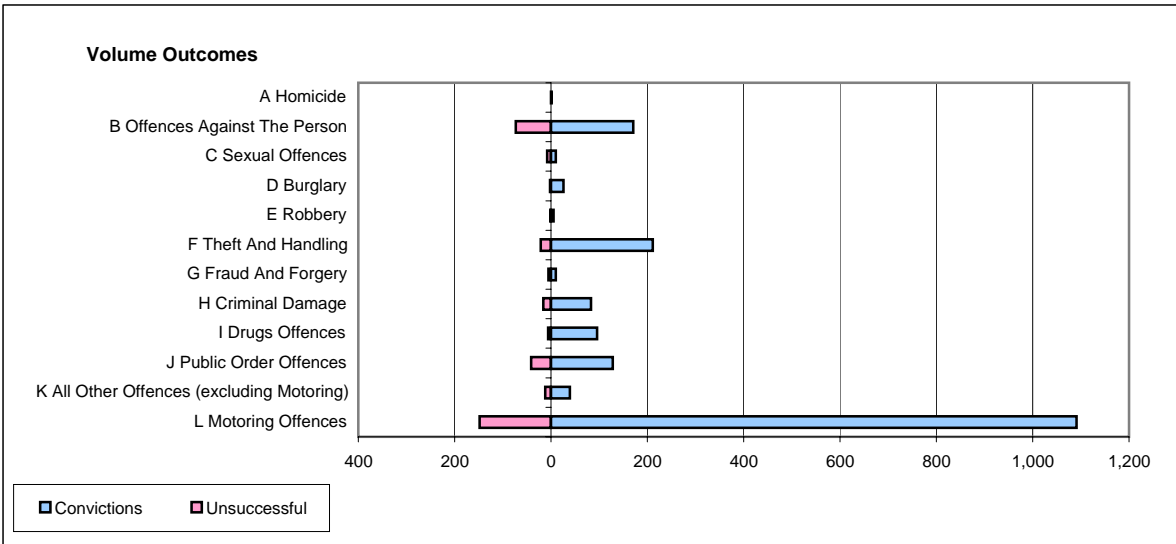
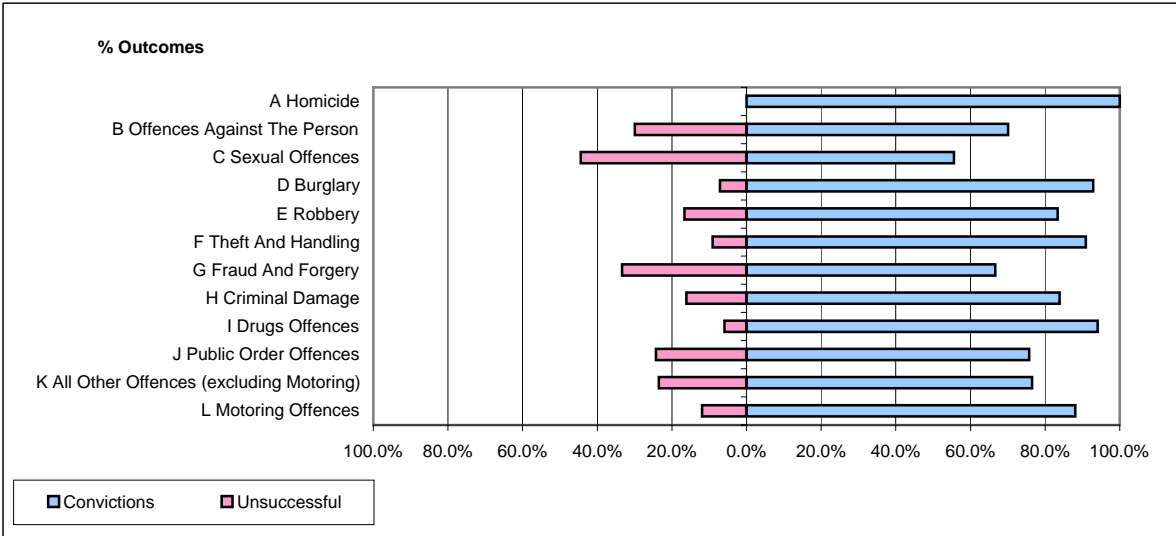


CPS OUTCOMES BY PRINCIPAL OFFENCE CATEGORY

April 2006

P32-SouthWales



	Convictions		Unsuccessful	
	Number of Defendants	%	Number of Defendants	%
A Homicide	1	100.0%	0	0.0%
B Offences Against The Person	171	70.1%	73	29.9%
C Sexual Offences	10	55.6%	8	44.4%
D Burglary	26	92.9%	2	7.1%
E Robbery	5	83.3%	1	16.7%
F Theft And Handling	211	90.9%	21	9.1%
G Fraud And Forgery	10	66.7%	5	33.3%
H Criminal Damage	83	83.8%	16	16.2%
I Drugs Offences	96	94.1%	6	5.9%
J Public Order Offences	128	75.7%	41	24.3%
K All Other Offences (excluding Motoring)	39	76.5%	12	23.5%
L Motoring Offences	1,091	88.1%	148	11.9%
Admin Finalisations	0	0.0%	93	100.0%
TOTAL	1,871	81.5%	426	18.5%