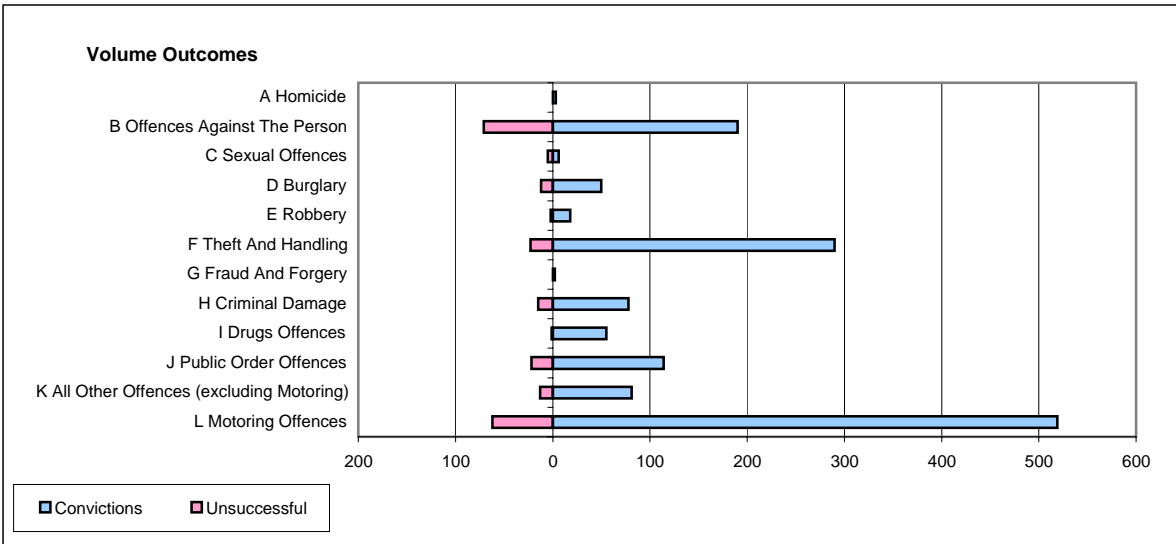
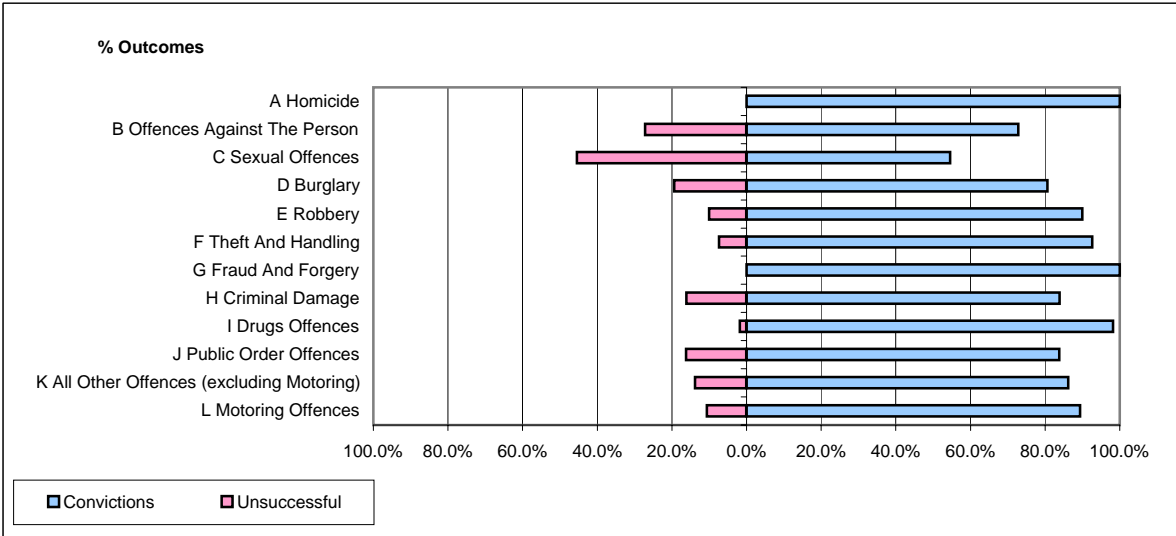


CPS OUTCOMES BY PRINCIPAL OFFENCE CATEGORY

April 2006

P31-Nottinghamshire



| | Convictions | | Unsuccessful | |
|--|----------------------|---------------|----------------------|---------------|
| | Number of Defendants | % | Number of Defendants | % |
| A Homicide | 3 | 100.0% | 0 | 0.0% |
| B Offences Against The Person | 190 | 72.8% | 71 | 27.2% |
| C Sexual Offences | 6 | 54.5% | 5 | 45.5% |
| D Burglary | 50 | 80.6% | 12 | 19.4% |
| E Robbery | 18 | 90.0% | 2 | 10.0% |
| F Theft And Handling | 290 | 92.7% | 23 | 7.3% |
| G Fraud And Forgery | 2 | 100.0% | 0 | 0.0% |
| H Criminal Damage | 78 | 83.9% | 15 | 16.1% |
| I Drugs Offences | 55 | 98.2% | 1 | 1.8% |
| J Public Order Offences | 114 | 83.8% | 22 | 16.2% |
| K All Other Offences (excluding Motoring) | 81 | 86.2% | 13 | 13.8% |
| L Motoring Offences | 519 | 89.3% | 62 | 10.7% |
| Admin Finalisations | 0 | 0.0% | 20 | 100.0% |
| TOTAL | 1,406 | 85.1% | 246 | 14.9% |