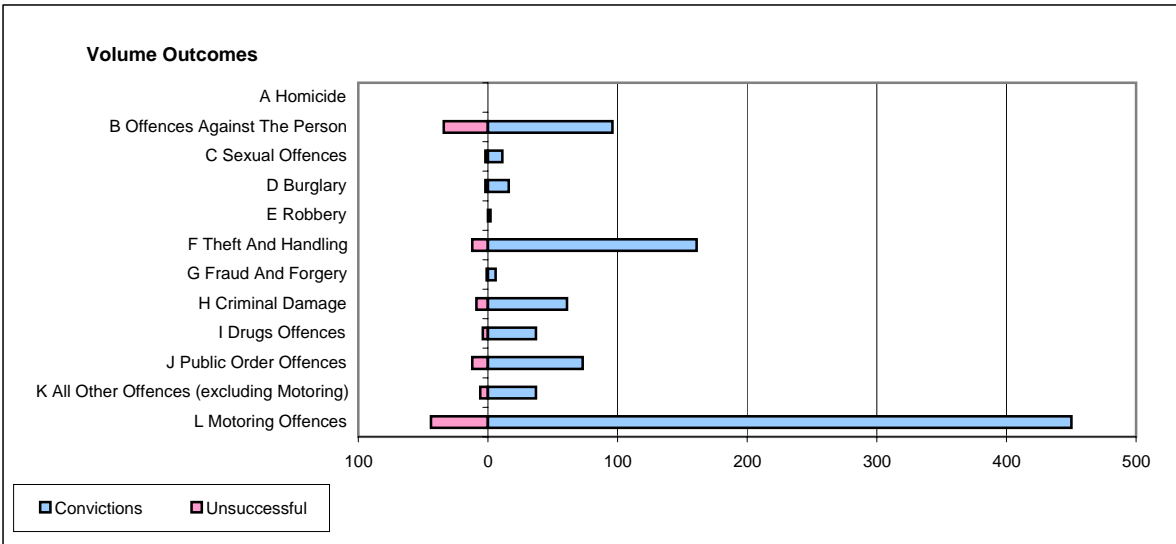
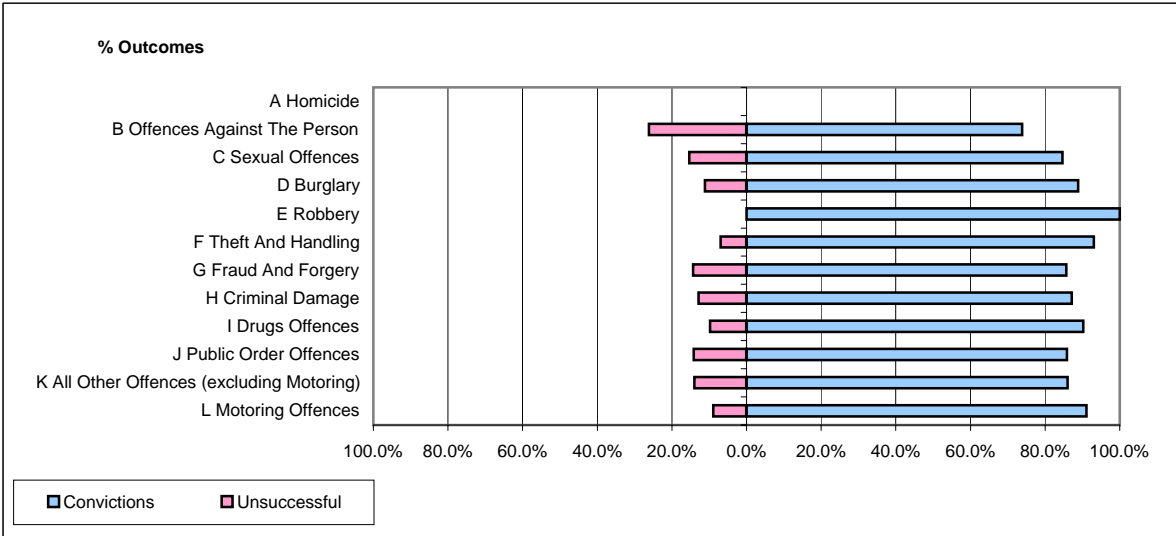


CPS OUTCOMES BY PRINCIPAL OFFENCE CATEGORY

April 2006

P26-Norfolk



	Convictions		Unsuccessful	
	Number of Defendants	%	Number of Defendants	%
A Homicide	0	#DIV/0!	0	#DIV/0!
B Offences Against The Person	96	73.8%	34	26.2%
C Sexual Offences	11	84.6%	2	15.4%
D Burglary	16	88.9%	2	11.1%
E Robbery	2	100.0%	0	0.0%
F Theft And Handling	161	93.1%	12	6.9%
G Fraud And Forgery	6	85.7%	1	14.3%
H Criminal Damage	61	87.1%	9	12.9%
I Drugs Offences	37	90.2%	4	9.8%
J Public Order Offences	73	85.9%	12	14.1%
K All Other Offences (excluding Motoring)	37	86.0%	6	14.0%
L Motoring Offences	450	91.1%	44	8.9%
Admin Finalisations	0	0.0%	30	100.0%
TOTAL	950	85.9%	156	14.1%