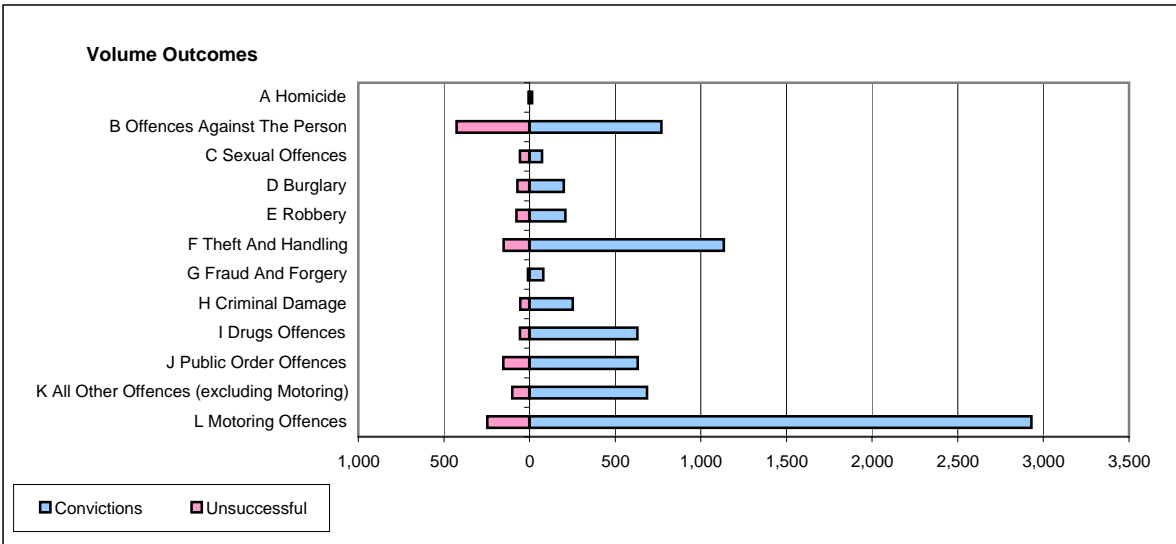
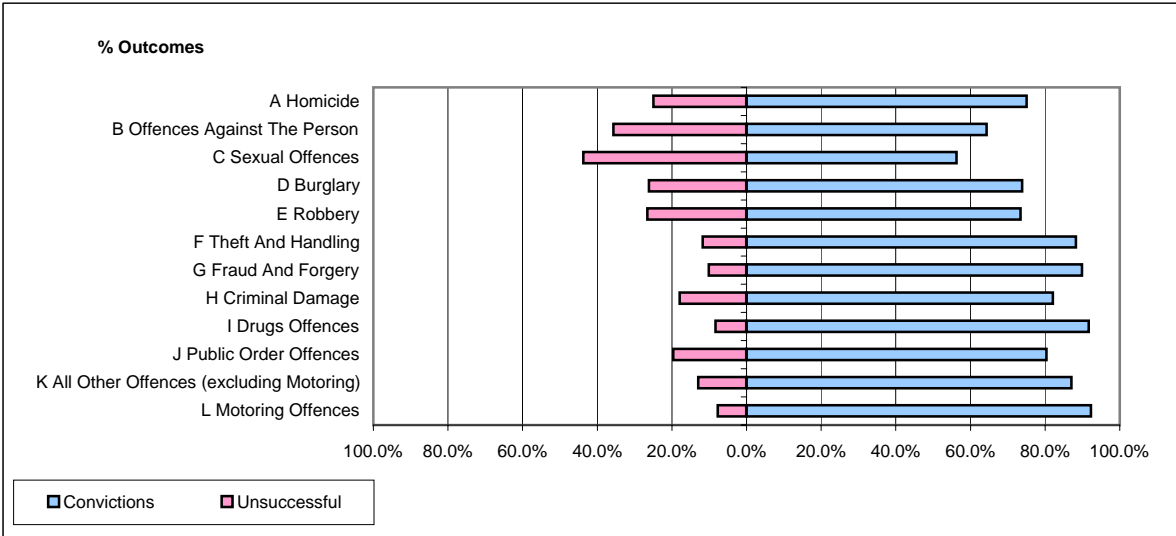


CPS OUTCOMES BY PRINCIPAL OFFENCE CATEGORY

April 2006

P25-Metropolitan&City



	Convictions		Unsuccessful	
	Number of Defendants	%	Number of Defendants	%
A Homicide	15	75.0%	5	25.0%
B Offences Against The Person	769	64.3%	427	35.7%
C Sexual Offences	72	56.3%	56	43.8%
D Burglary	200	73.8%	71	26.2%
E Robbery	210	73.4%	76	26.6%
F Theft And Handling	1,134	88.2%	151	11.8%
G Fraud And Forgery	80	89.9%	9	10.1%
H Criminal Damage	252	82.1%	55	17.9%
I Drugs Offences	629	91.7%	57	8.3%
J Public Order Offences	631	80.4%	154	19.6%
K All Other Offences (excluding Motoring)	686	87.1%	102	12.9%
L Motoring Offences	2,930	92.3%	246	7.7%
Admin Finalisations	0	0.0%	647	100.0%
TOTAL	7,608	78.7%	2,056	21.3%