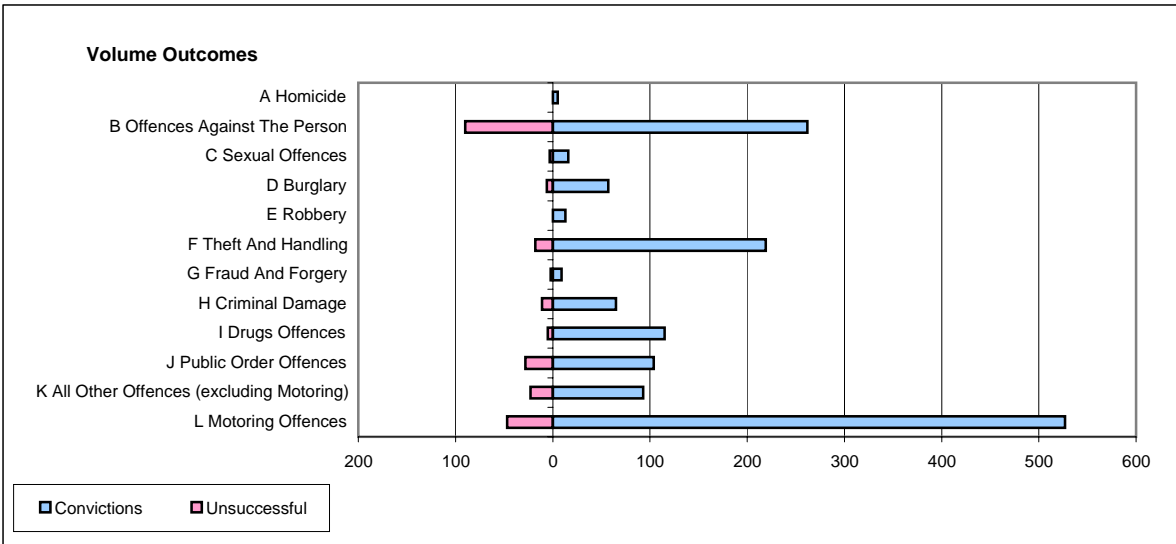
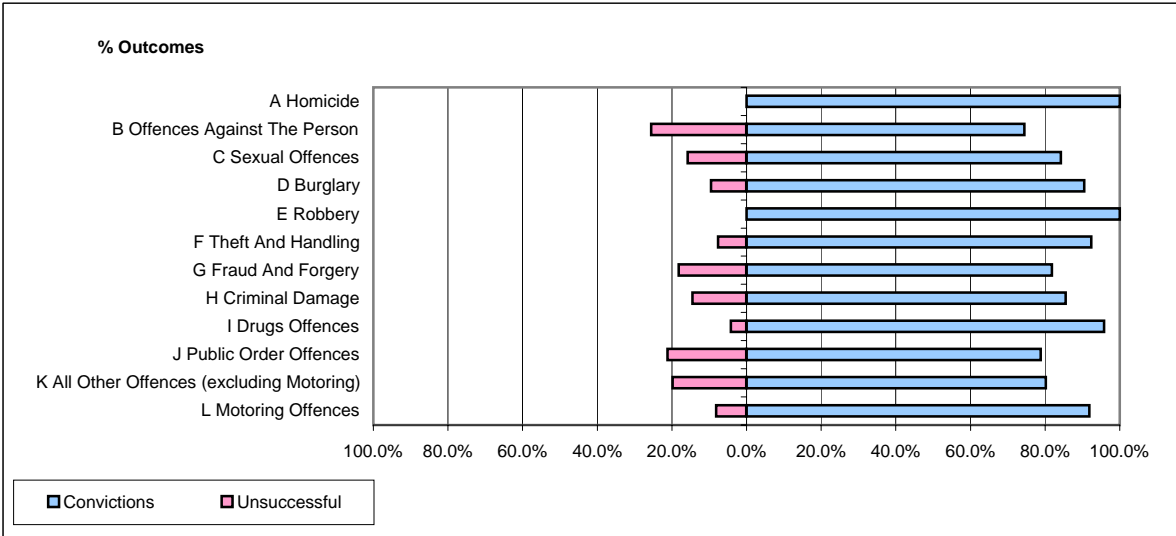


**CPS OUTCOMES BY PRINCIPAL OFFENCE CATEGORY**

**April 2006**

**P24-Merseyside**



	Convictions		Unsuccessful	
	Number of Defendants	%	Number of Defendants	%
<b>A Homicide</b>	<b>5</b>	<b>100.0%</b>	<b>0</b>	<b>0.0%</b>
<b>B Offences Against The Person</b>	<b>262</b>	<b>74.4%</b>	<b>90</b>	<b>25.6%</b>
<b>C Sexual Offences</b>	<b>16</b>	<b>84.2%</b>	<b>3</b>	<b>15.8%</b>
<b>D Burglary</b>	<b>57</b>	<b>90.5%</b>	<b>6</b>	<b>9.5%</b>
<b>E Robbery</b>	<b>13</b>	<b>100.0%</b>	<b>0</b>	<b>0.0%</b>
<b>F Theft And Handling</b>	<b>219</b>	<b>92.4%</b>	<b>18</b>	<b>7.6%</b>
<b>G Fraud And Forgery</b>	<b>9</b>	<b>81.8%</b>	<b>2</b>	<b>18.2%</b>
<b>H Criminal Damage</b>	<b>65</b>	<b>85.5%</b>	<b>11</b>	<b>14.5%</b>
<b>I Drugs Offences</b>	<b>115</b>	<b>95.8%</b>	<b>5</b>	<b>4.2%</b>
<b>J Public Order Offences</b>	<b>104</b>	<b>78.8%</b>	<b>28</b>	<b>21.2%</b>
<b>K All Other Offences (excluding Motoring)</b>	<b>93</b>	<b>80.2%</b>	<b>23</b>	<b>19.8%</b>
<b>L Motoring Offences</b>	<b>527</b>	<b>91.8%</b>	<b>47</b>	<b>8.2%</b>
<b>Admin Finalisations</b>	<b>0</b>	<b>0.0%</b>	<b>31</b>	<b>100.0%</b>
<b>TOTAL</b>	<b>1,485</b>	<b>84.9%</b>	<b>264</b>	<b>15.1%</b>