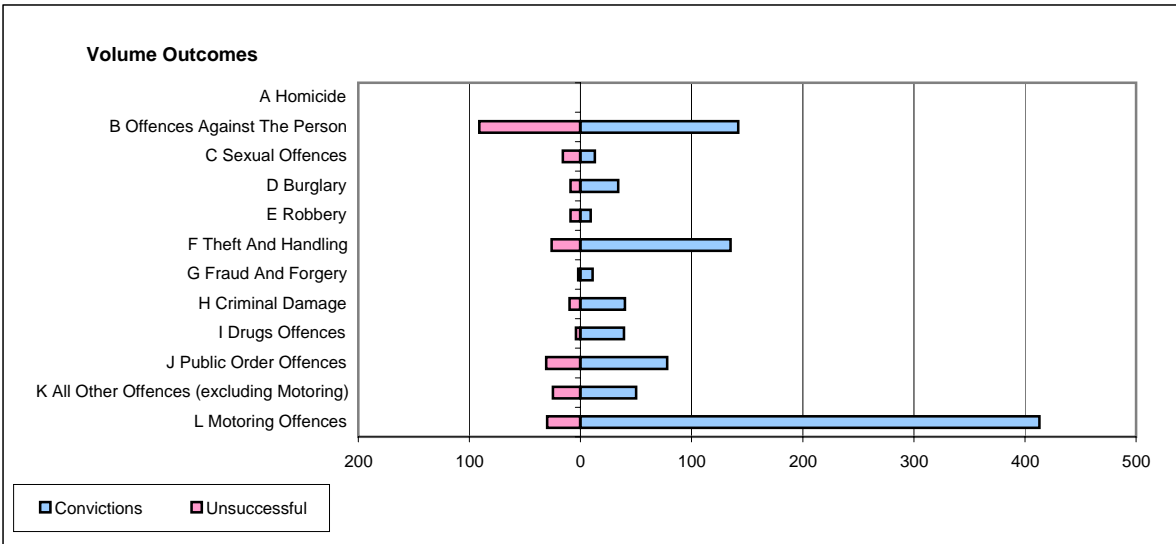
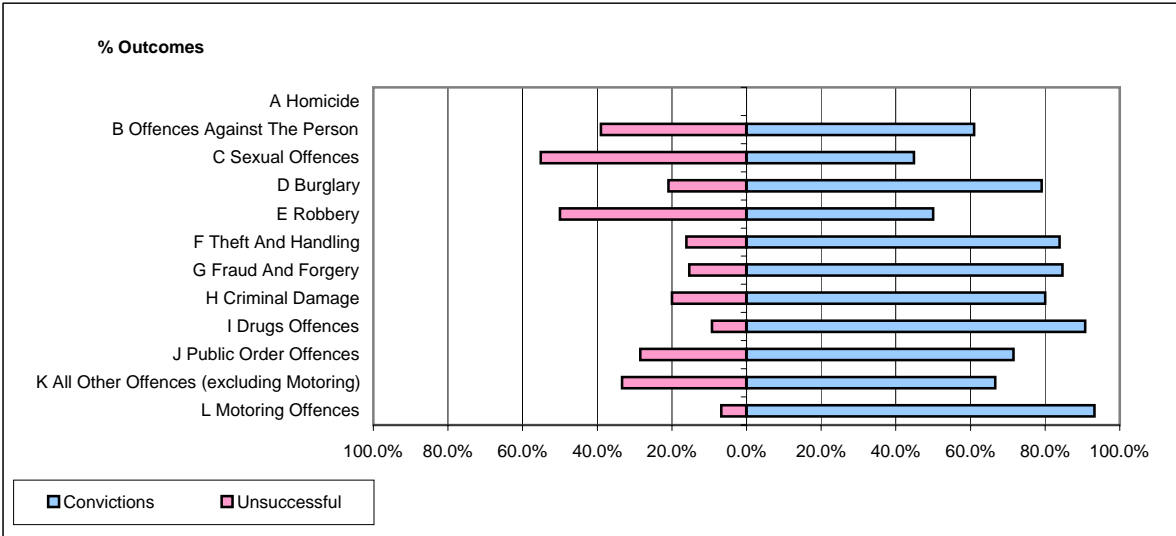


CPS OUTCOMES BY PRINCIPAL OFFENCE CATEGORY

April 2006

P22-Leicestershire



	Convictions		Unsuccessful	
	Number of Defendants	%	Number of Defendants	%
A Homicide	0	#DIV/0!	0	#DIV/0!
B Offences Against The Person	142	60.9%	91	39.1%
C Sexual Offences	13	44.8%	16	55.2%
D Burglary	34	79.1%	9	20.9%
E Robbery	9	50.0%	9	50.0%
F Theft And Handling	135	83.9%	26	16.1%
G Fraud And Forgery	11	84.6%	2	15.4%
H Criminal Damage	40	80.0%	10	20.0%
I Drugs Offences	39	90.7%	4	9.3%
J Public Order Offences	78	71.6%	31	28.4%
K All Other Offences (excluding Motoring)	50	66.7%	25	33.3%
L Motoring Offences	413	93.2%	30	6.8%
Admin Finalisations	0	0.0%	50	100.0%
TOTAL	964	76.1%	303	23.9%