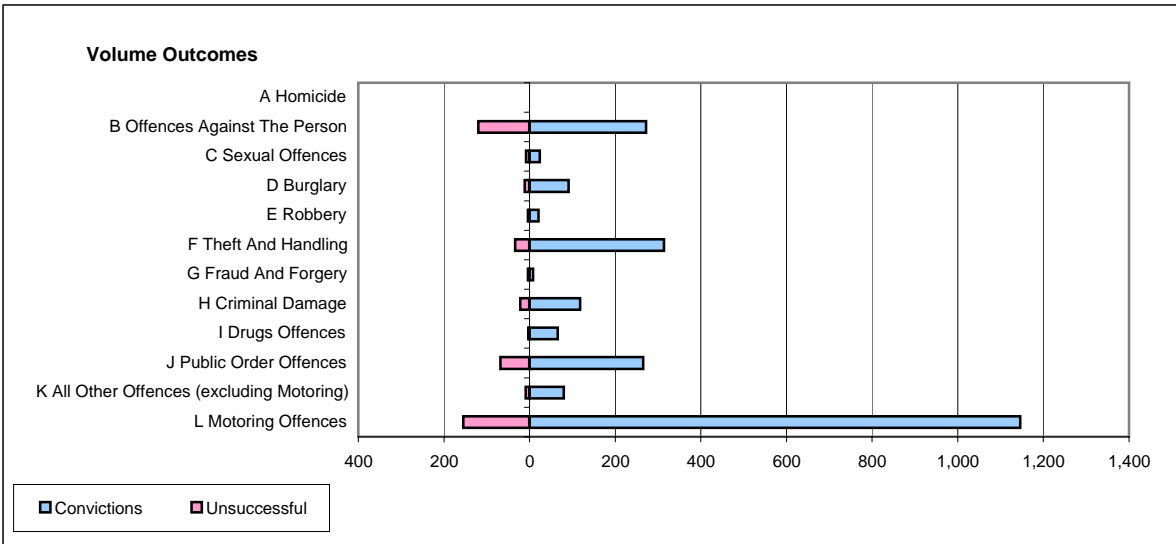
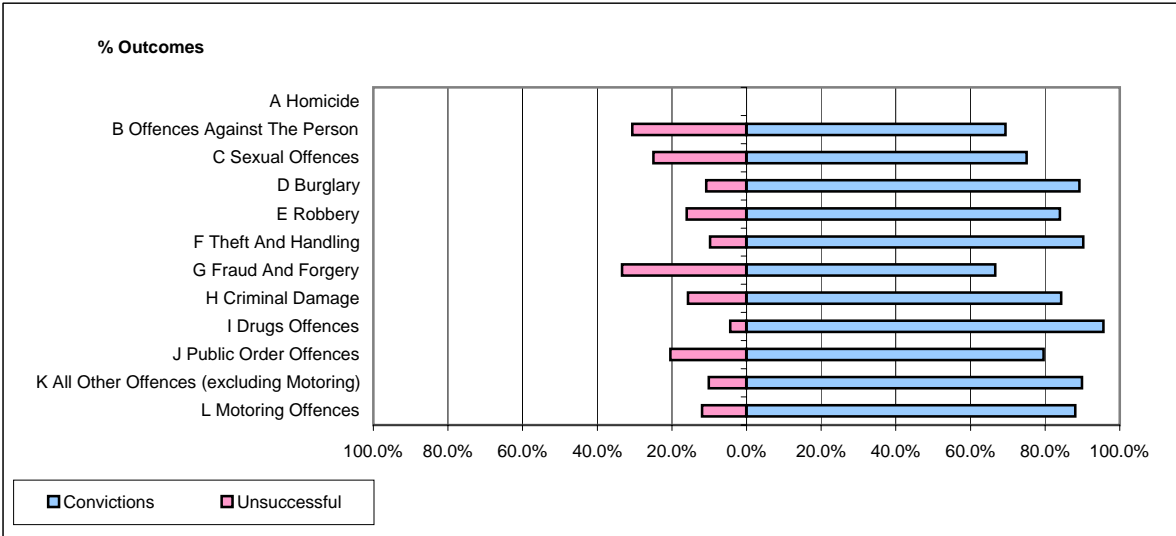


CPS OUTCOMES BY PRINCIPAL OFFENCE CATEGORY

April 2006

P21-Lancashire



	Convictions		Unsuccessful	
	Number of Defendants	%	Number of Defendants	%
A Homicide	0	#DIV/0!	0	#DIV/0!
B Offences Against The Person	272	69.4%	120	30.6%
C Sexual Offences	24	75.0%	8	25.0%
D Burglary	91	89.2%	11	10.8%
E Robbery	21	84.0%	4	16.0%
F Theft And Handling	314	90.2%	34	9.8%
G Fraud And Forgery	8	66.7%	4	33.3%
H Criminal Damage	118	84.3%	22	15.7%
I Drugs Offences	66	95.7%	3	4.3%
J Public Order Offences	265	79.6%	68	20.4%
K All Other Offences (excluding Motoring)	80	89.9%	9	10.1%
L Motoring Offences	1,146	88.1%	155	11.9%
Admin Finalisations	0	0.0%	77	100.0%
TOTAL	2,405	82.4%	515	17.6%